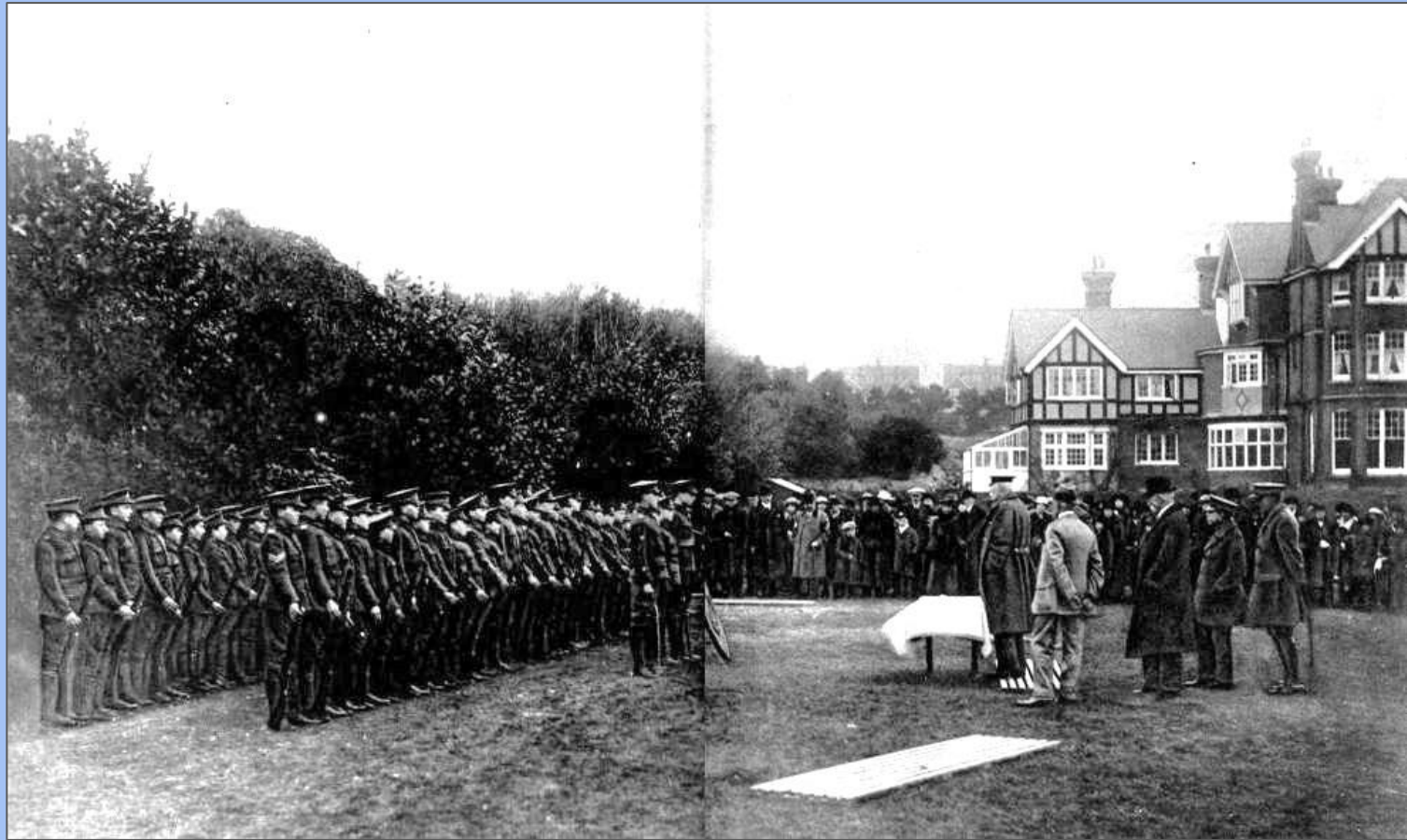


ORWELL

No. 1. Sept. 13



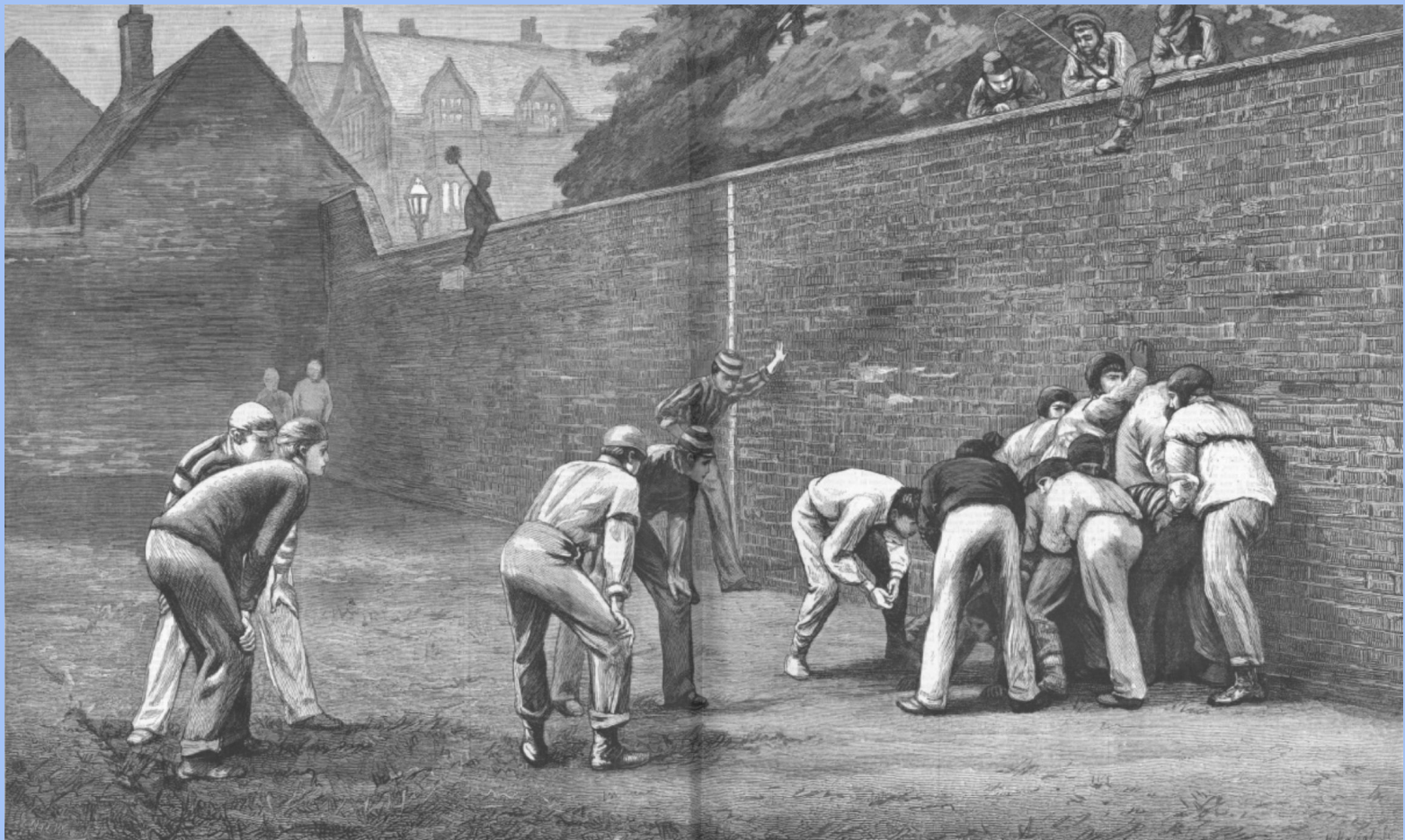
St. Cyprian's prep school, Sussex near Eastborne



Eton College and School

**Lupton's Tower
facing the School
Yard, Eton**

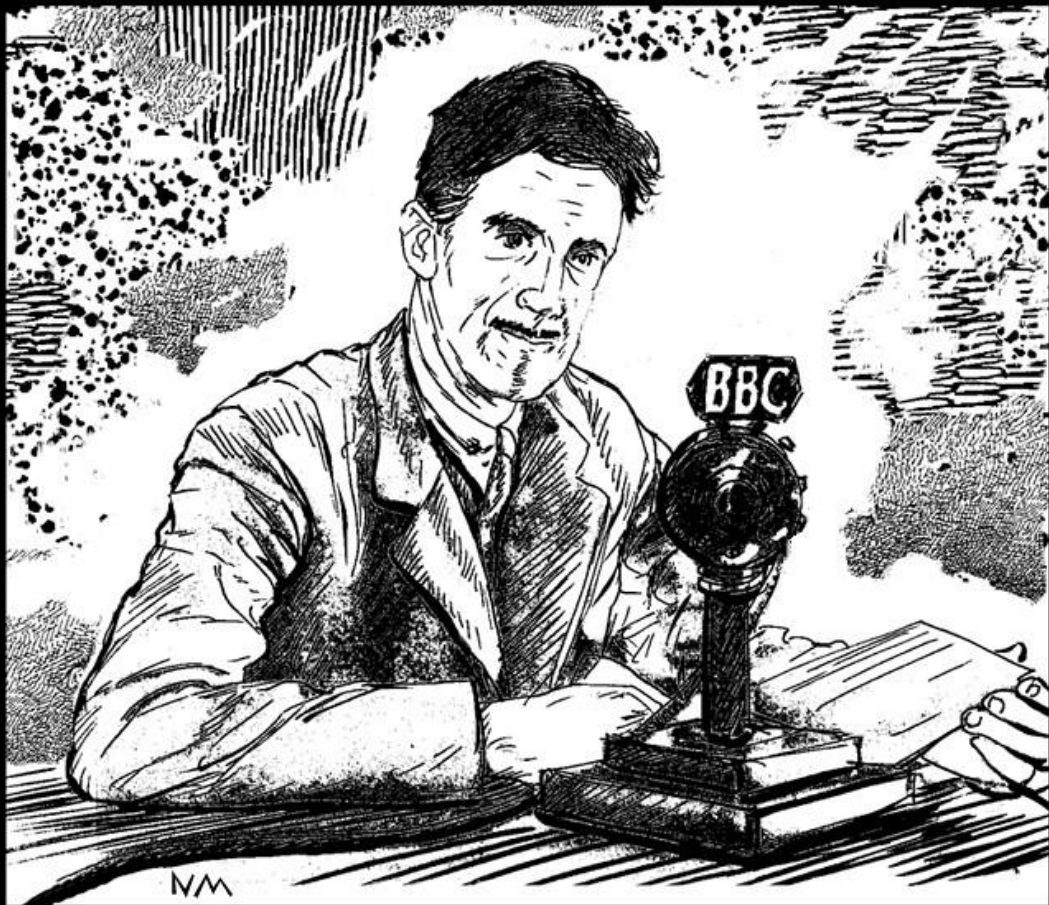


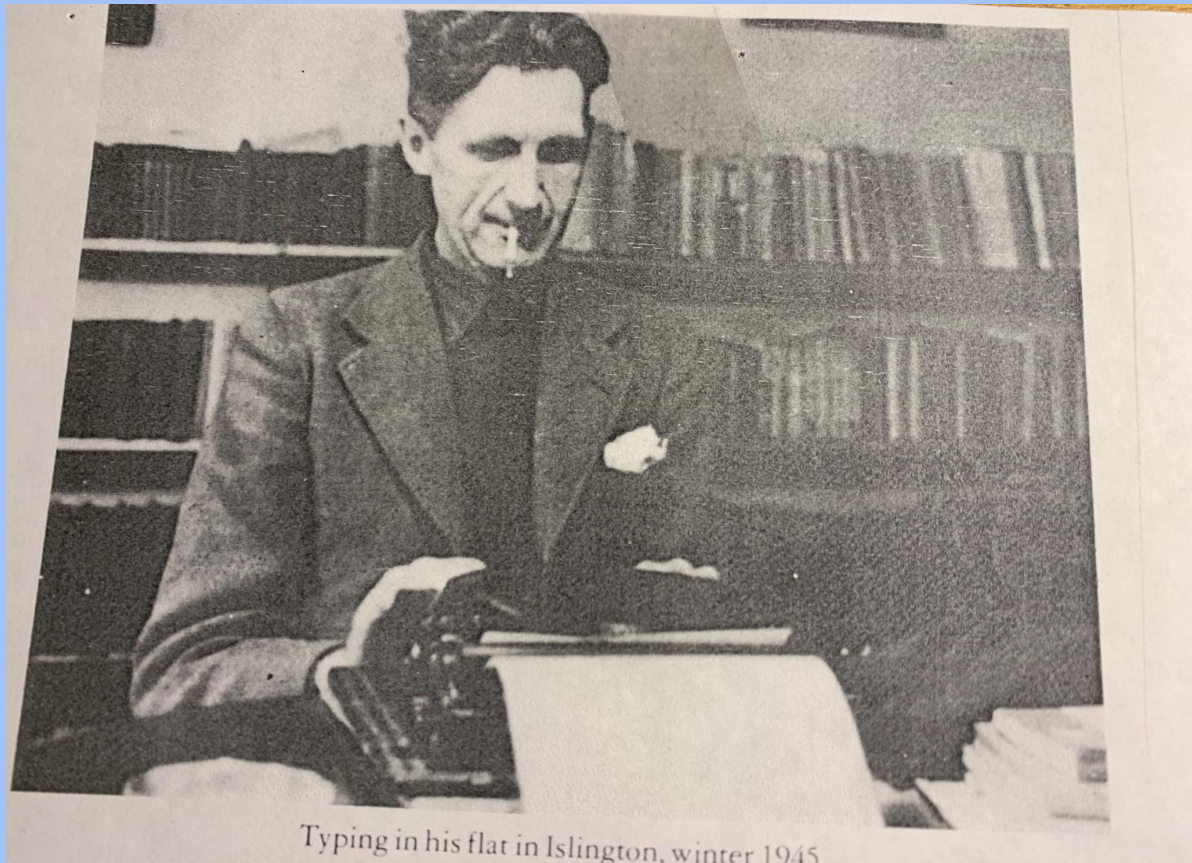


The Wall Game at Eron

Orwell at the BBC, 1943-44







Typing in his flat in Islington, winter 1945

The characteristic pose.

London Borough of Islington

George Orwell
1903-1950

Novelist & Essayist

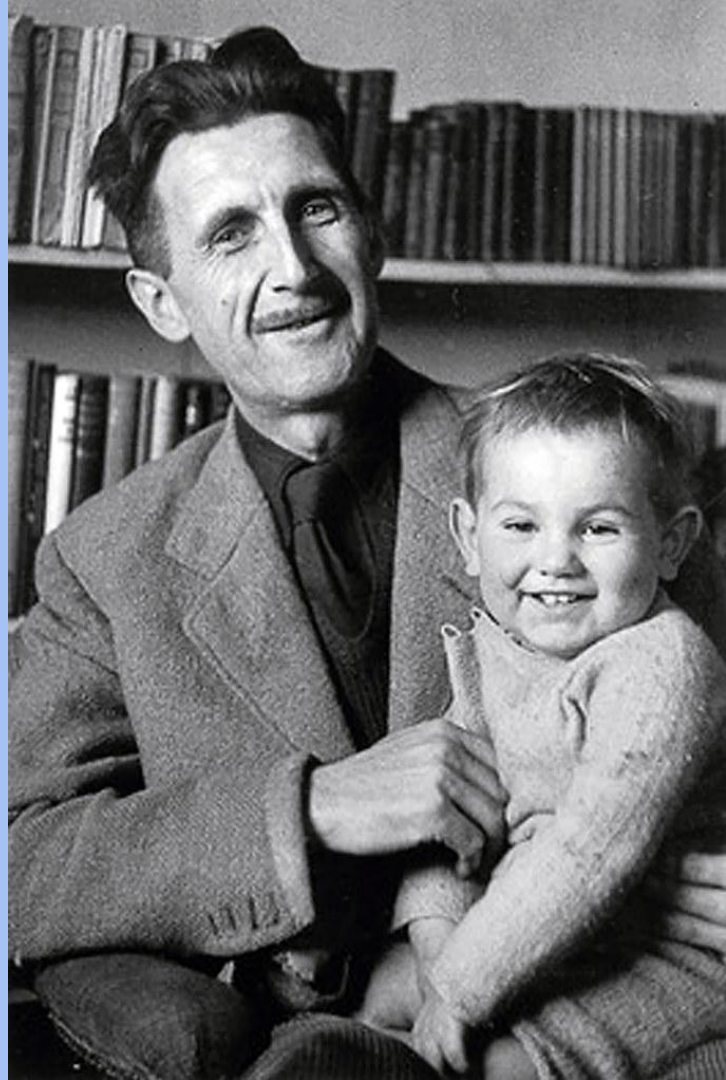
lived here at 27b
1944-1947

The Canonbury Society



Barnhill farm on the island of Jura, inner Hebrides, Scotland

**Orwell and his adopted son,
Richard**



**All Saints graveyard,
Sutton Courtney, Berks.**

