

Form: Sculpture and Spectacle

Shift Architecture, Museumplein Limburg, Netherlands, 2015



Elements of Architectural Form:

geometrical and organic volumes

scale

proportion

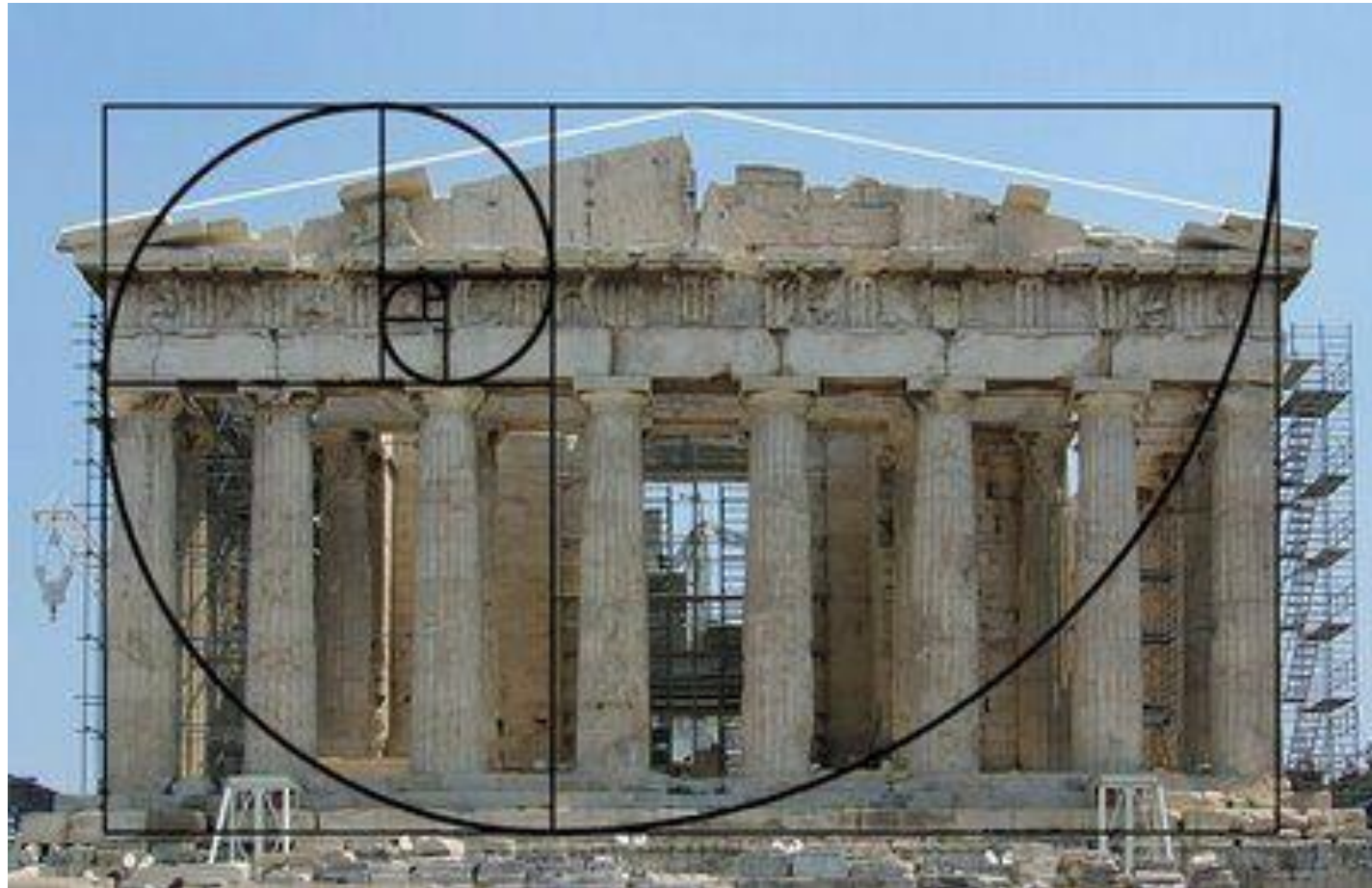
rhythm

articulation

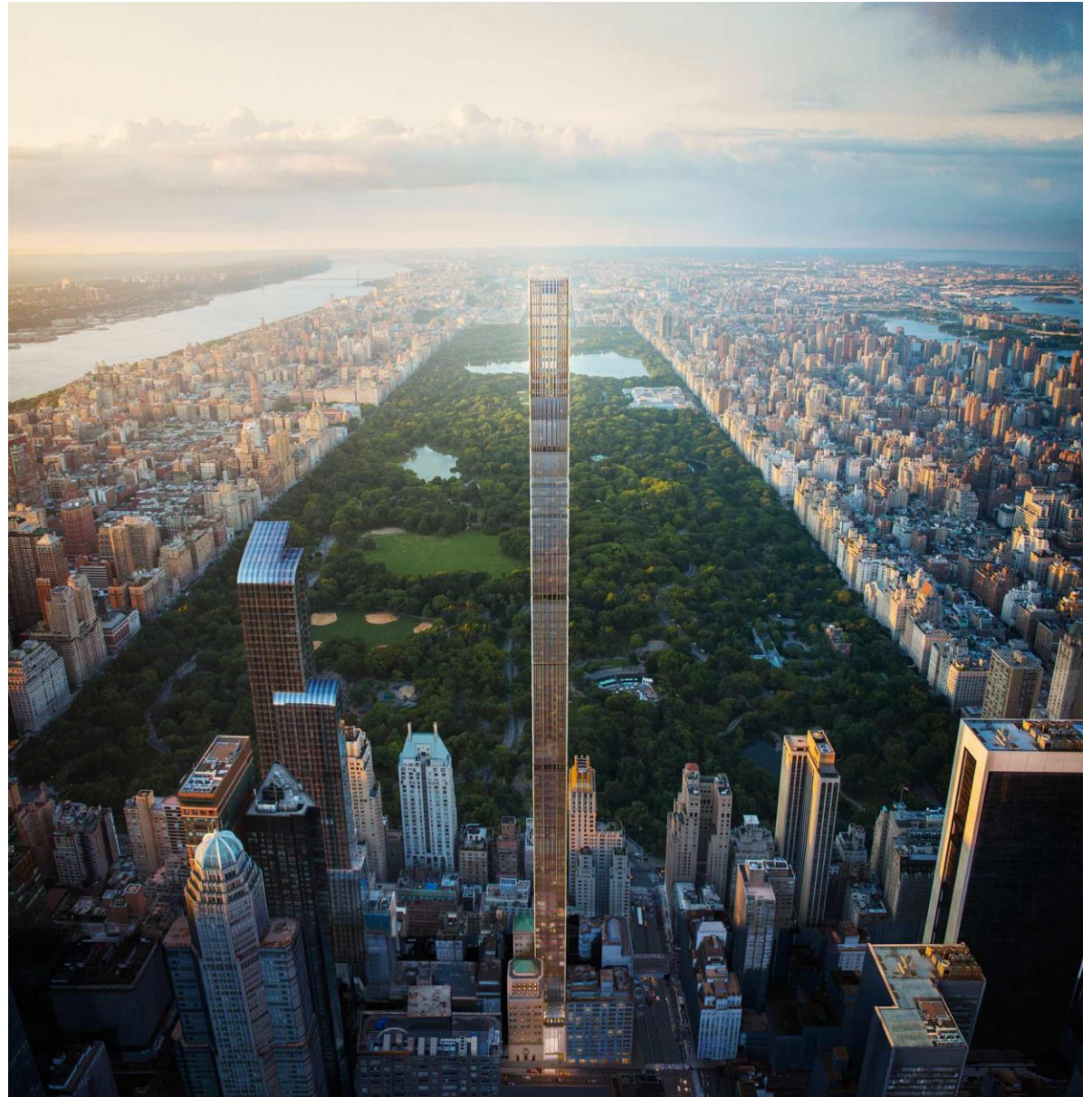
massing and void

aspect ratio

Parthenon, Athens, 432 BC



SHoP Architects,
111 W. 57th St.
New York, 2021



Sources of architectural form (Gelernter):

intended function

creative imagination

spirit of the age

social and economic conditions

universal principles

techniques in design, materials and construction

Stage One Gallery

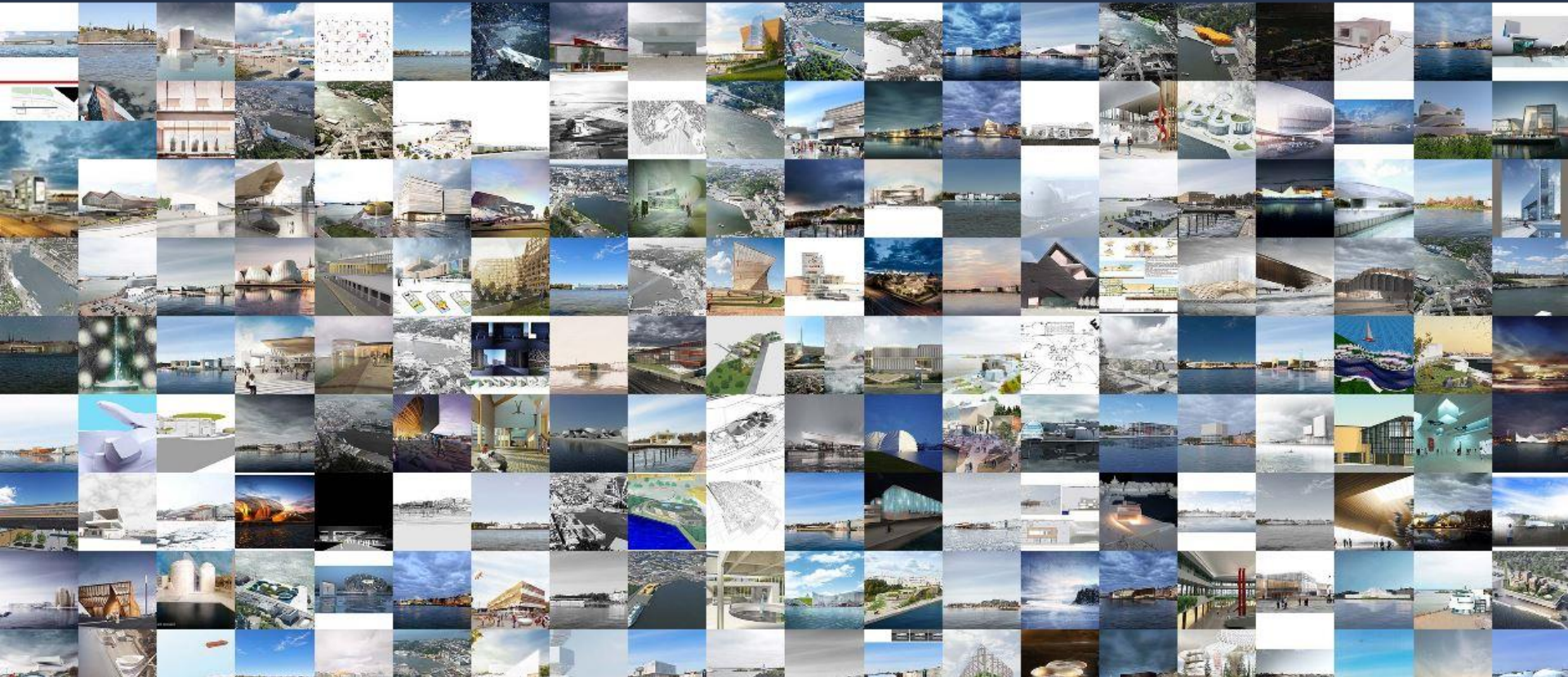
SHUFFLE

SEARCH BY REGISTRATION

VIEW BY TAGS

FAVORITES

MY SHORTLIST



Schaerer: An image-based media culture produces architecture as image production:

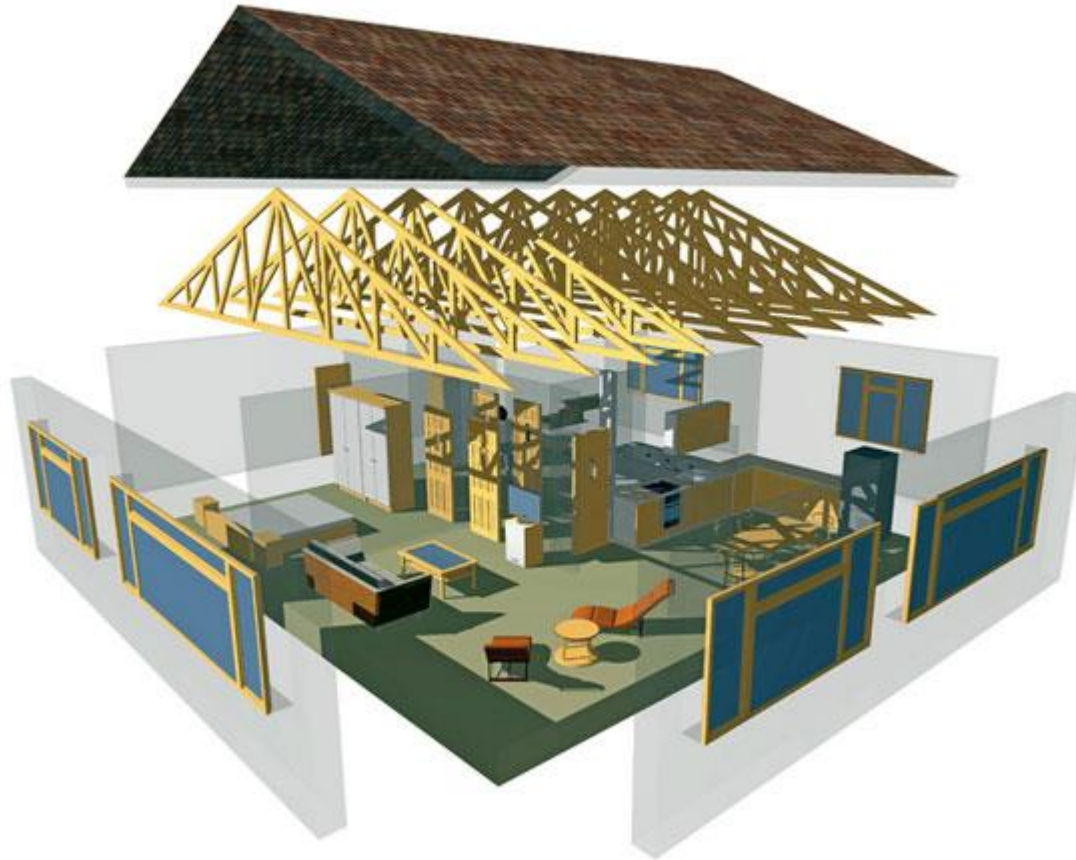
conditions:

- circulation of images on internet, cropped and detached.
- magazines devoted to architectural imagery.
- marketing and promotion
- digital visualization technologies

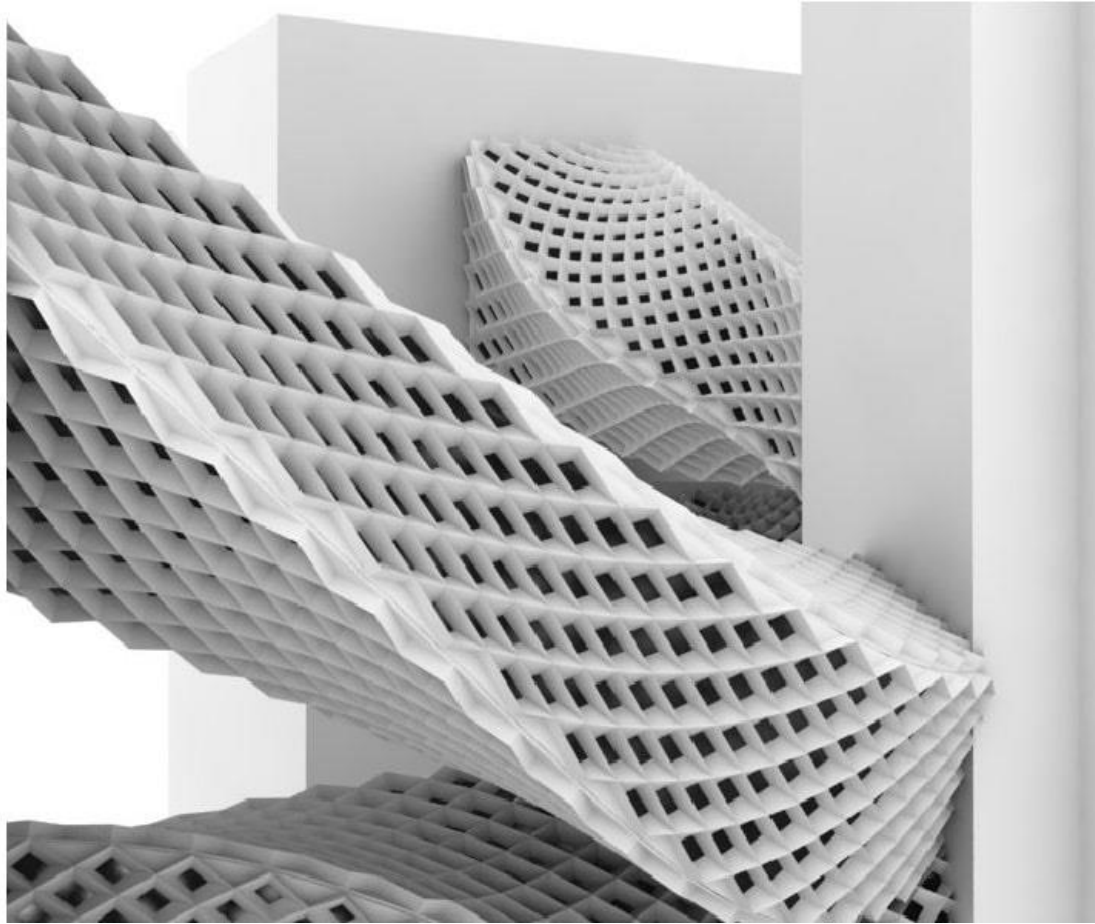
consequences:

- project designs confused with realized constructions
- buildings derived from extreme image constructs
- buildings designed and experienced as images

CAD software

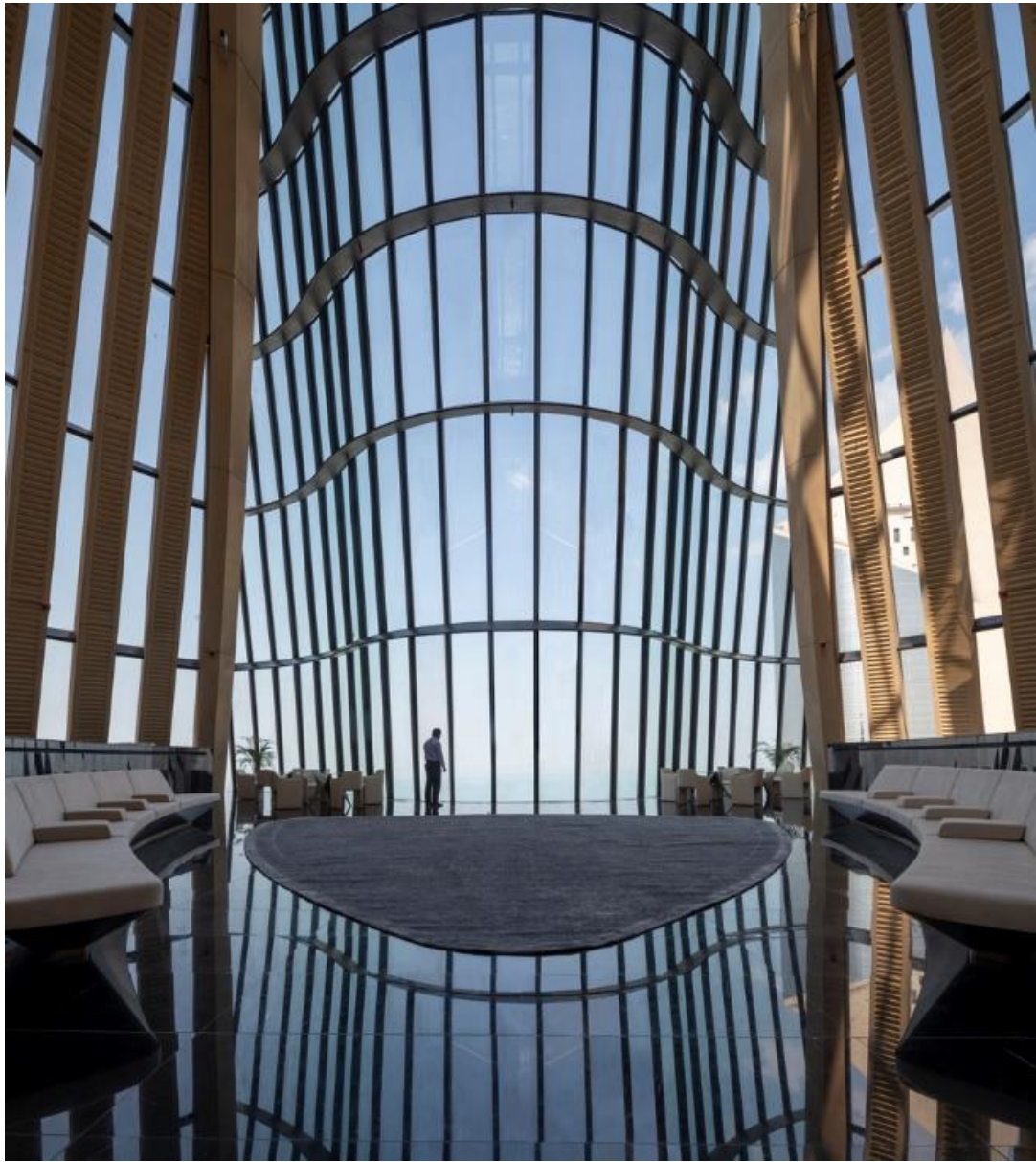


Parametric modeling



Norman Foster,
Kuwait National Bank,
2022









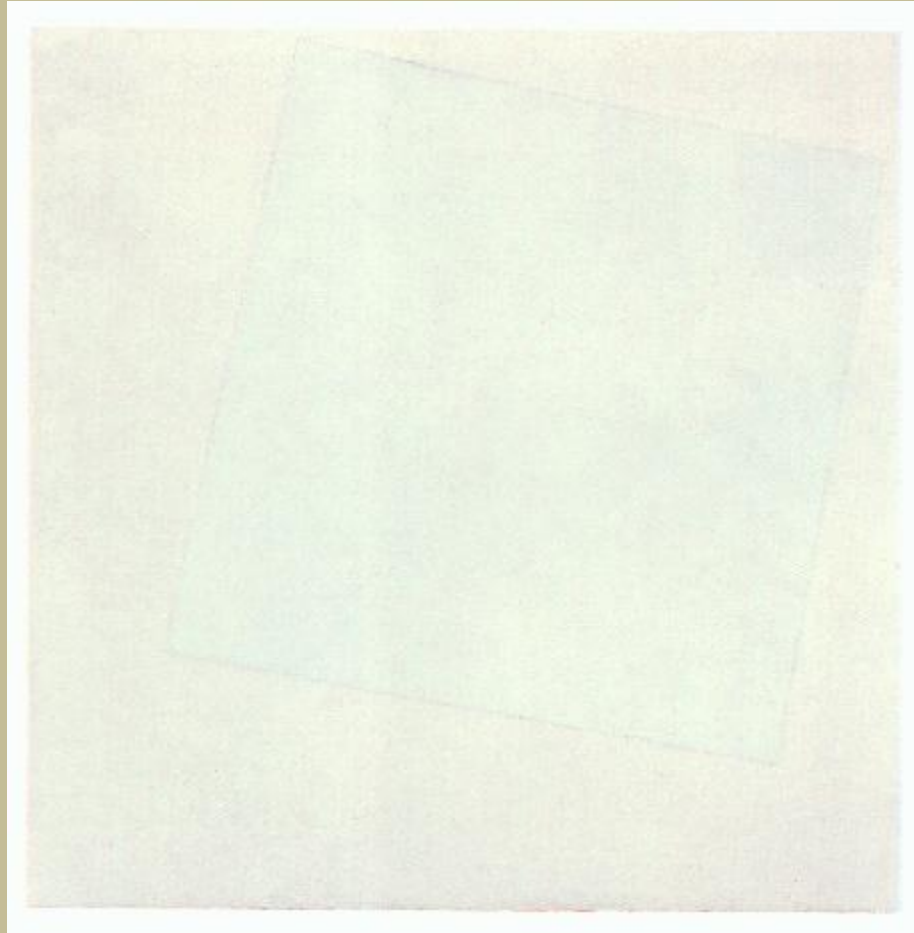
Norman Foster,
Swiss Re Building
(30 St. Mary Axe),
London, 2003



MRJ Rundell & Associates, White Cube Gallery, London, 2006



Kasimir Malevich, *White Square on White Background*, 1918



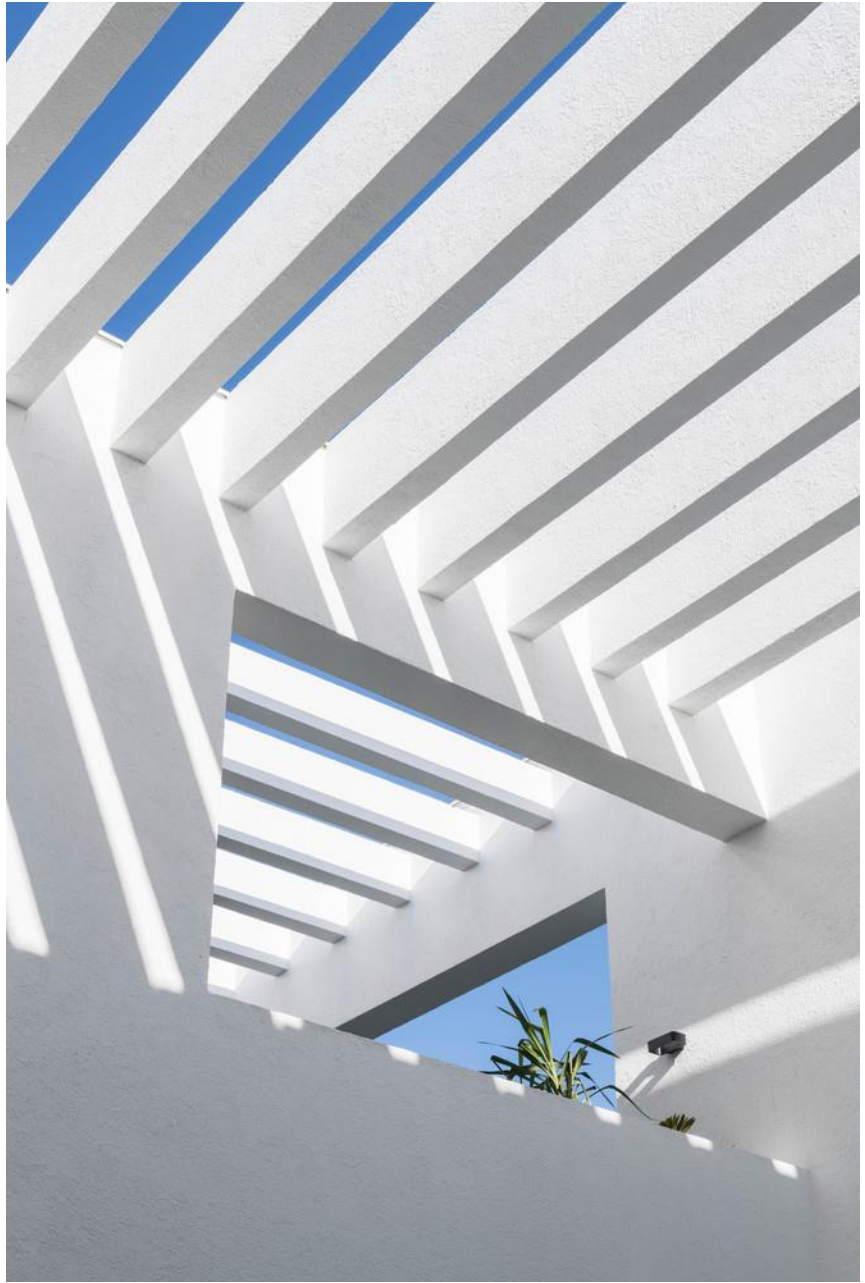




Cadaval & Solà-Morales, Ombra House, San Pedro Garza García, Mexico, 2019









Et je transforme mon quotidien!

Great Pyramid of Giza, 2,550 B.C.



Team Design Group, Gilak Villa, Iran, 2020





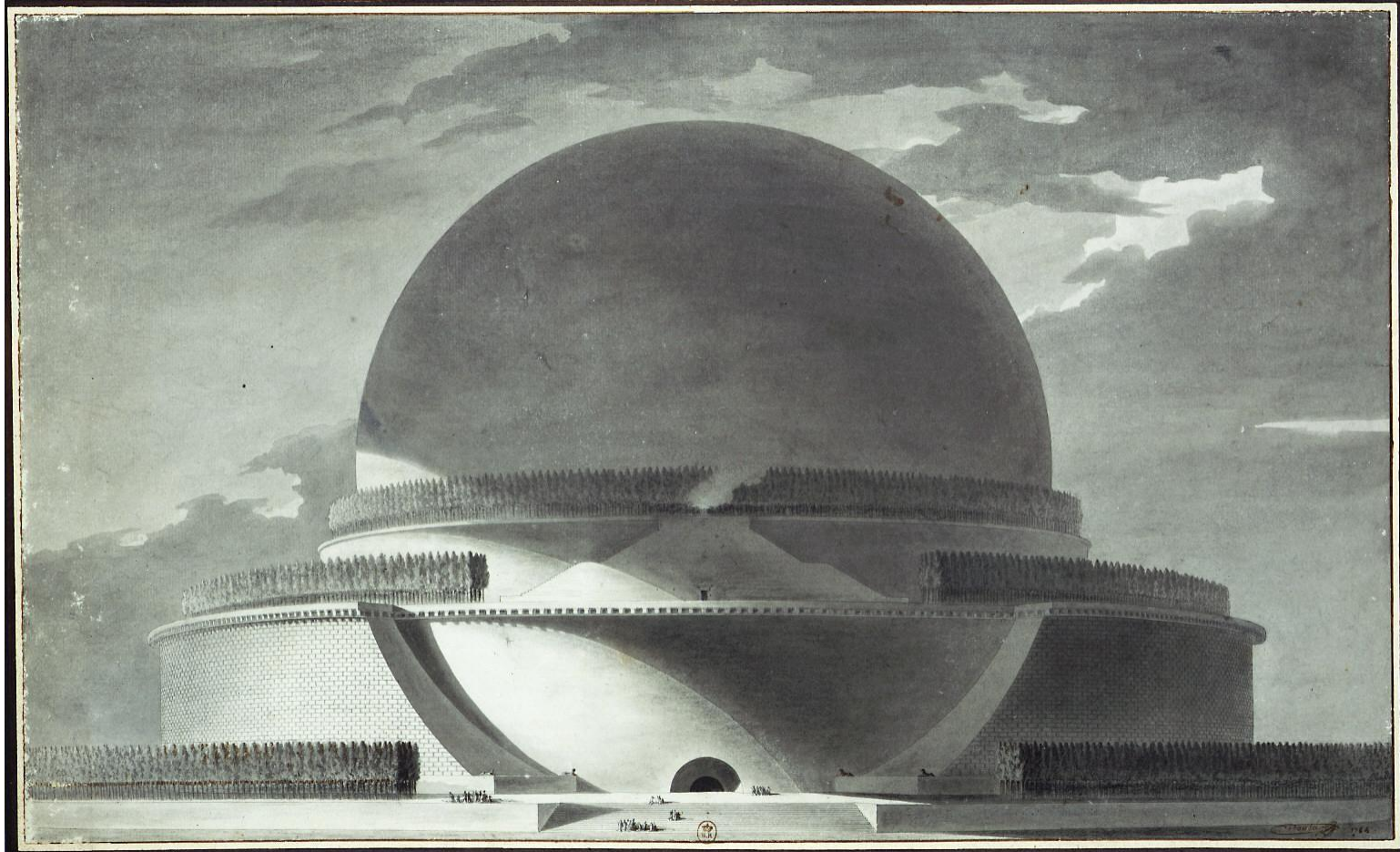


Bernard Rodrigues, Chapel of Eternal Light, Ponta Garça, Azores, Portugal, 2018





Etienne-Louis Boullée, Cénotaphe à Newton, 1784



Source gallica.bnf.fr / Bibliothèque nationale de France

Büchi et Dessimoz, Globe de la science et de l'innovation, CERN, Genève



Shigeru Ban, La Seine musicale, Ile Séguin, France, 2017

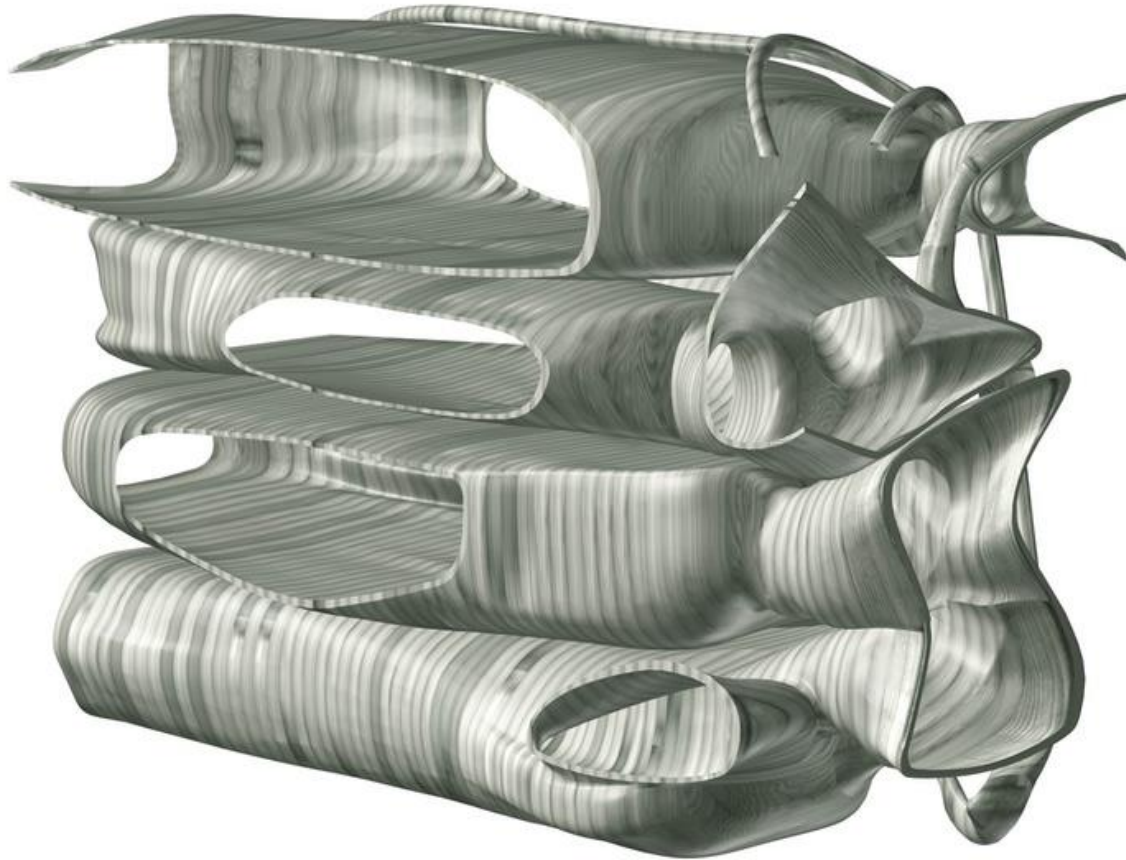




Le Corbusier, Notre-Dame du Haut, Ronchamp, 1955



François Roche, Waterflux, Evolène, Switzerland, 2003





Heatherwick Studio, Temple, Kagoshima, Japan



Detail, Portrait of Lord George Stuart, Seigneur d'Aubigny, Anthony Van Dyck, 1638



Zaha Hadid, Heydar Aliyev Centre, Baku, Azerbaijan, 2012



Kasimir Malevich, *Woman with Pails: Dynamic Arrangement*, 1913



BIG Architecture, Musée Atelier Audemars Piguet, Le Brassus, Switzerland, 2020





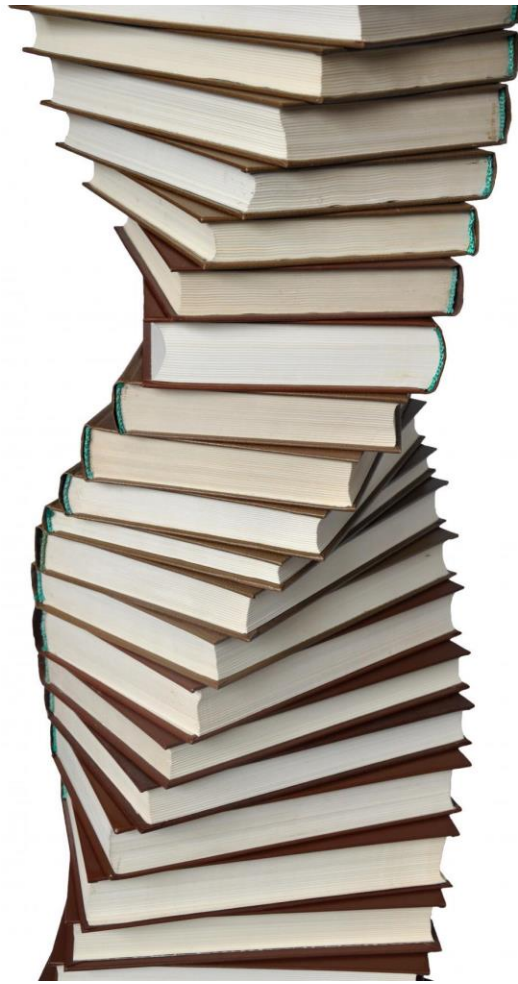


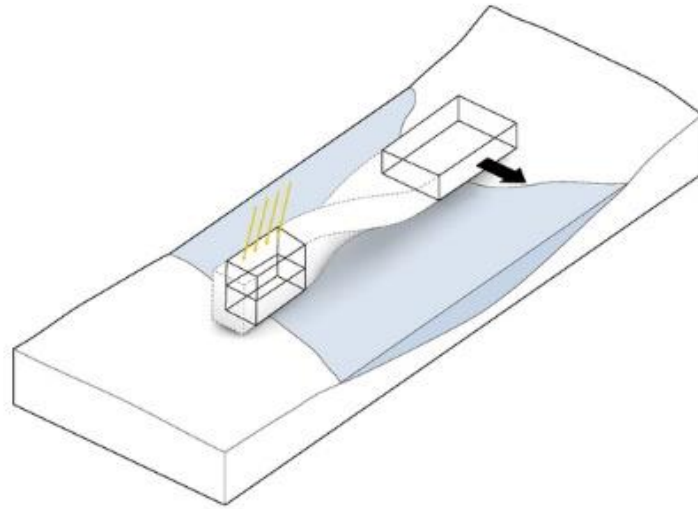
BIG, Twist Museum, Jevnaker, Norway, 2019











STACKED VERTICAL & HORIZONTAL GALLERIES

As a result of the building's twist, vertical galleries in the south enjoy natural light from overhead while the large horizontal, open gallery to the north offers views of the historic pulp mill and river.



Zeidler Architects,
Al Majdoul Tower,
Riyadh, Saudi Arabia,
2019



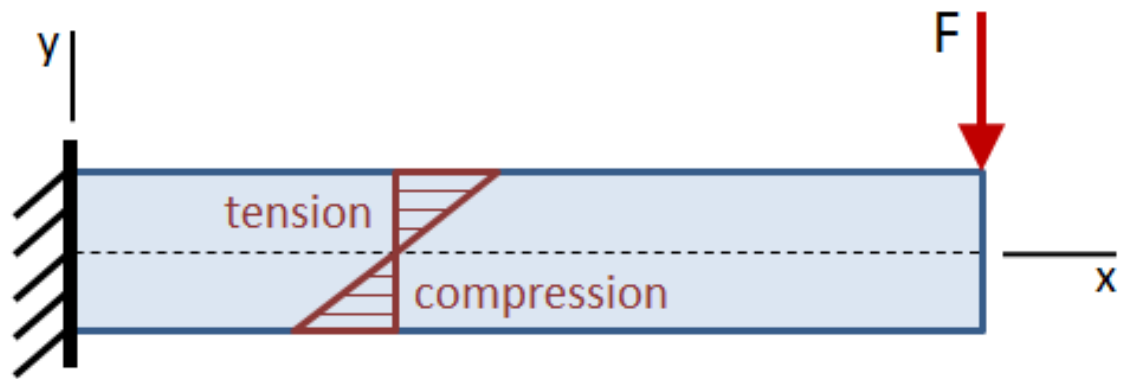
Danilo Veras Godoy, Casa de los Milagros, Xalapa, Veracruz, Mexico, 2002





Future Systems, Selfridge's Department Store, Birmingham, 2003





Coop Himmelb(l)au, Musée des Confluences, Lyon, 2014



Rem Koolhaas, OMA, CCTV Headquarters, Beijing, 2012





BIG, Sluishuis Residential Building, Amsterdam, 2022





New Wave Architecture, Turbosealtech New Incubator, Tehran, 2022





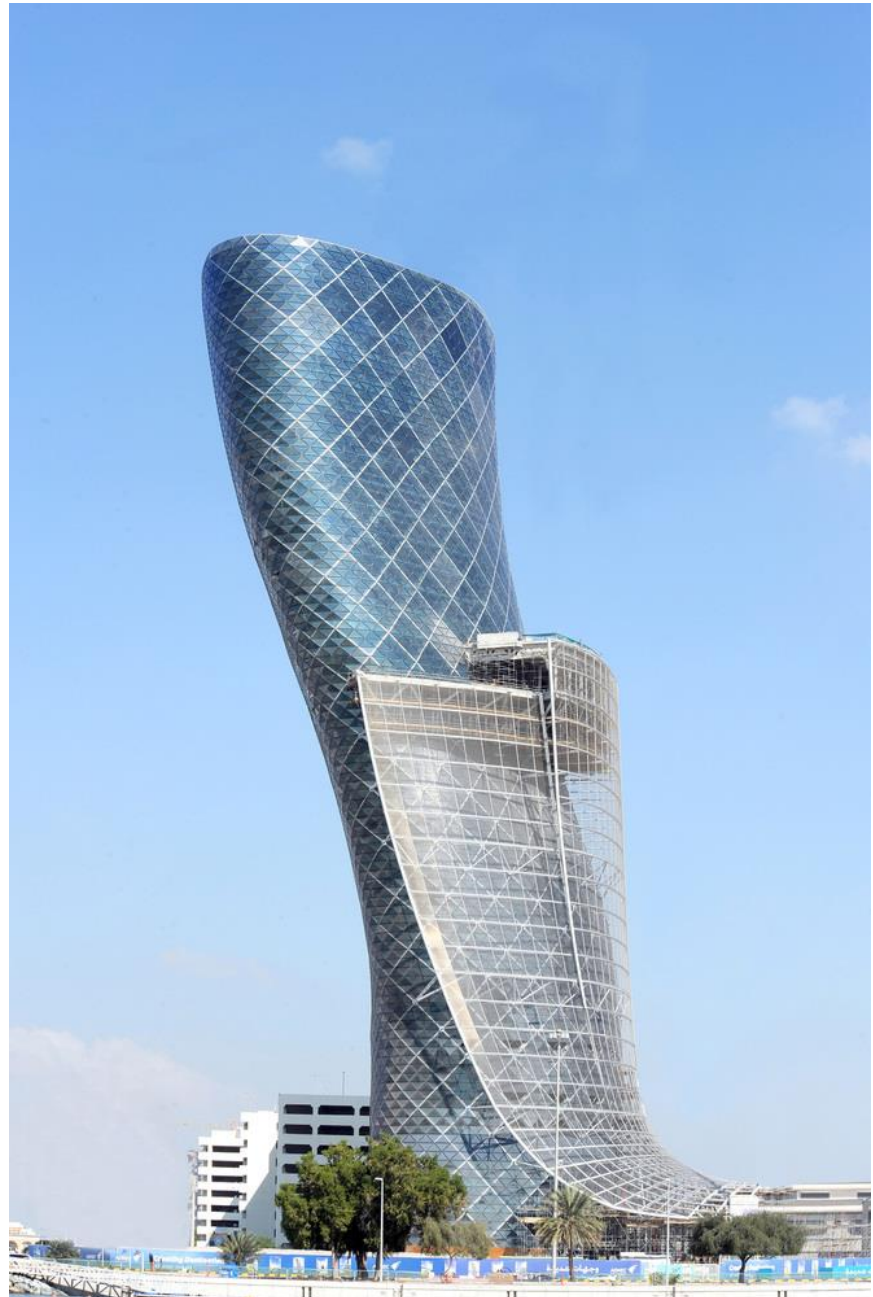
Stanley Tigerman, The Titanic, Chicago, 1978



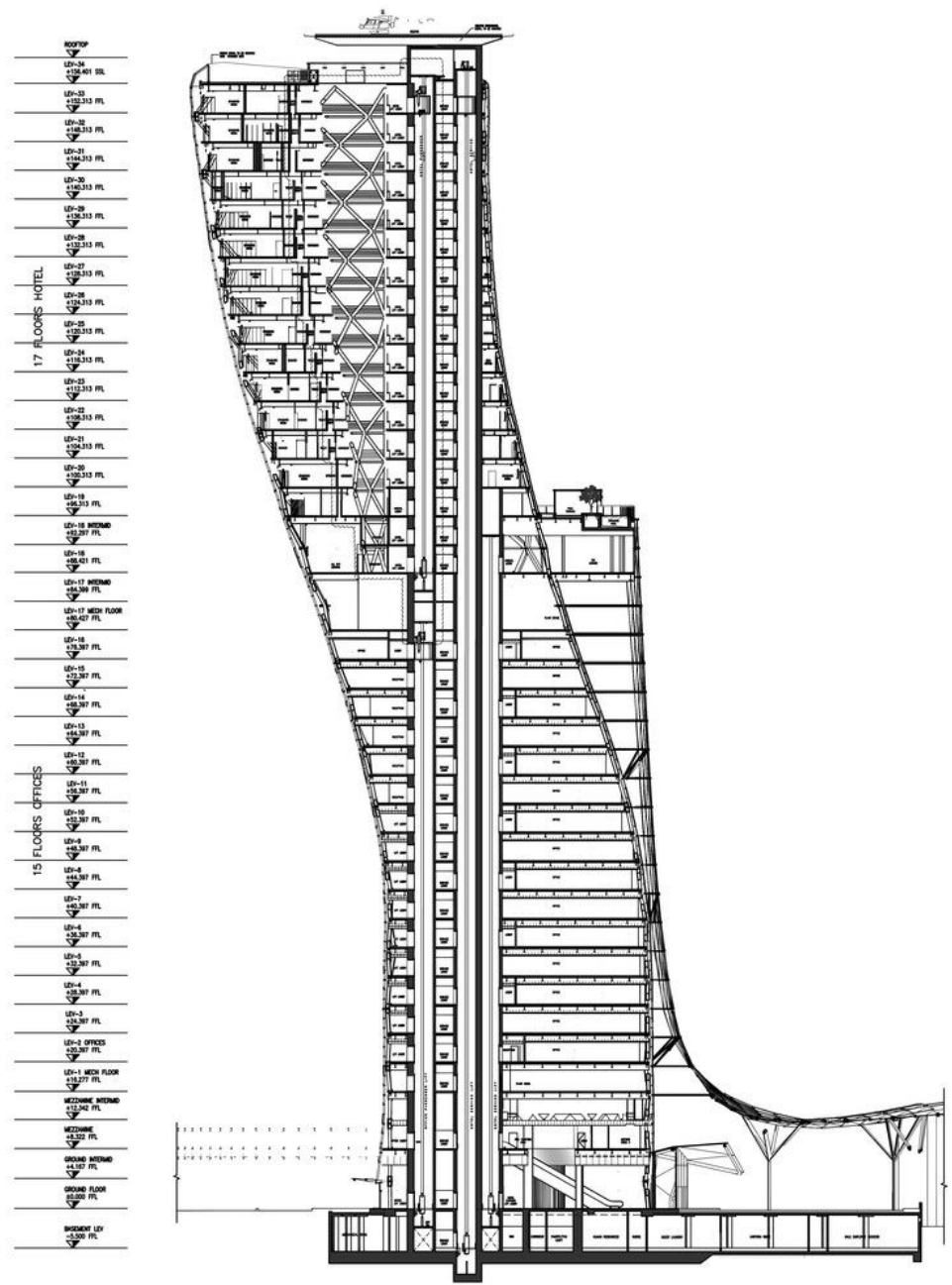
Ludwig Mies van der Rohe, Crown Hall, IIT, Chicago, 1956



RMJM, Capital Gate Tower, Abu
Dhabi, 2011







- ROOFTOP
- LEV-24 +116.401 FTL
- LEV-23 +112.313 FTL
- LEV-22 +108.313 FTL
- LEV-21 +104.313 FTL
- LEV-20 +100.313 FTL
- LEV-19 +100.313 FTL
- LEV-18 +100.313 FTL
- LEV-17 +100.313 FTL
- LEV-16 +100.313 FTL
- LEV-15 +100.313 FTL
- LEV-14 +100.313 FTL
- LEV-13 +100.313 FTL
- LEV-12 +100.313 FTL
- LEV-11 +100.313 FTL
- LEV-10 +100.313 FTL
- LEV-9 +100.313 FTL
- LEV-8 +100.313 FTL
- LEV-7 +100.313 FTL
- LEV-6 +100.313 FTL
- LEV-5 +100.313 FTL
- LEV-4 +100.313 FTL
- LEV-3 +100.313 FTL
- LEV-2 OFFICES +100.313 FTL
- LEV-1 MECH FLOOR +112.277 FTL
- MECHANICAL MEZANINE +112.242 FTL
- MECHANICAL +112.222 FTL
- GROUND MEZANINE +14.227 FTL
- GROUND FLOOR +10.227 FTL
- BASEMENT LEV -1.227 FTL

17 FLOORS HOTEL

15 FLOORS OFFICES

Cadaval & Solà Morales, Casa X, Cabrils, Spain, 2012







Fernando Menis, Holy Redeemer Church, Canary Islands, Spain, 2008







MVRDV, Depot Van Beuningen, Rotterdam, 2020







MAD Architects, Yabuli Congress Center, Harbin, China, 2020





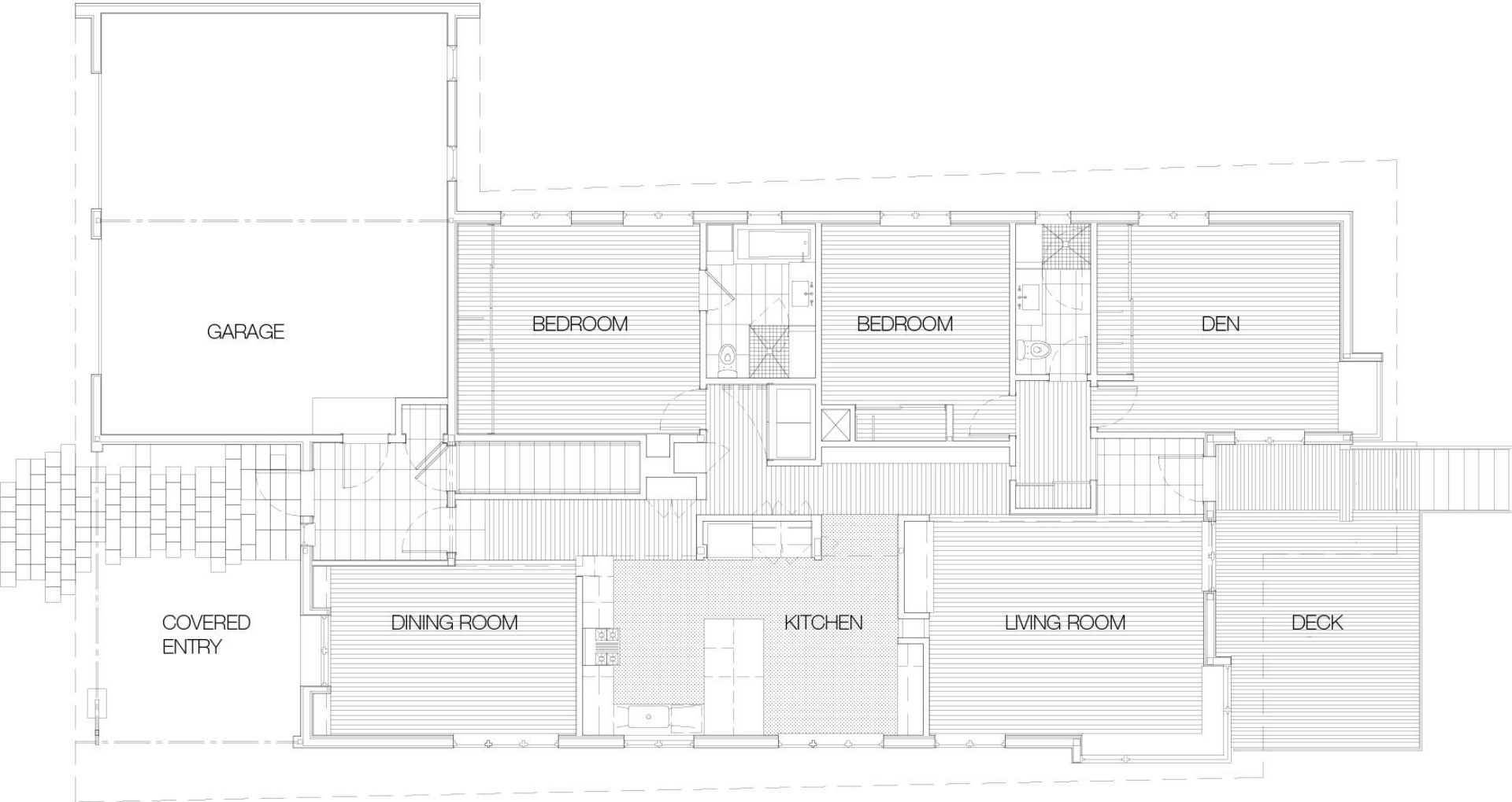


Reverse Architecture, Zigzag House, Falmouth ME, 2012



ZIGZAG HOUSE: EXTERIOR VIEW NIGHT SW





PLAN GROUND FLOOR







ZIGZAG HOUSE: EXTERIOR VIEW EAST

