

## Architecture in Context



## **Intervention in the built environment**

Tensions in context:

spatial tension: form and placement of building vs. its surroundings.

temporal tension: between context now and in future.

Nature of context:

space and form

historical identity

Only If, Narrow House, Brooklyn, 2021











Unemori Architects, House, Tokyo, 2019









Site - 1/1000 

Elemental, Social Housing, Iquique, Chile, 2003

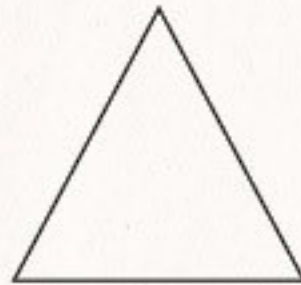






Make sure you balance:

Low-rise high density



without  
overcrowding

with possibility  
of expansion



David Adjaye, Mole House, London, 2020







Photos by Karen Russo









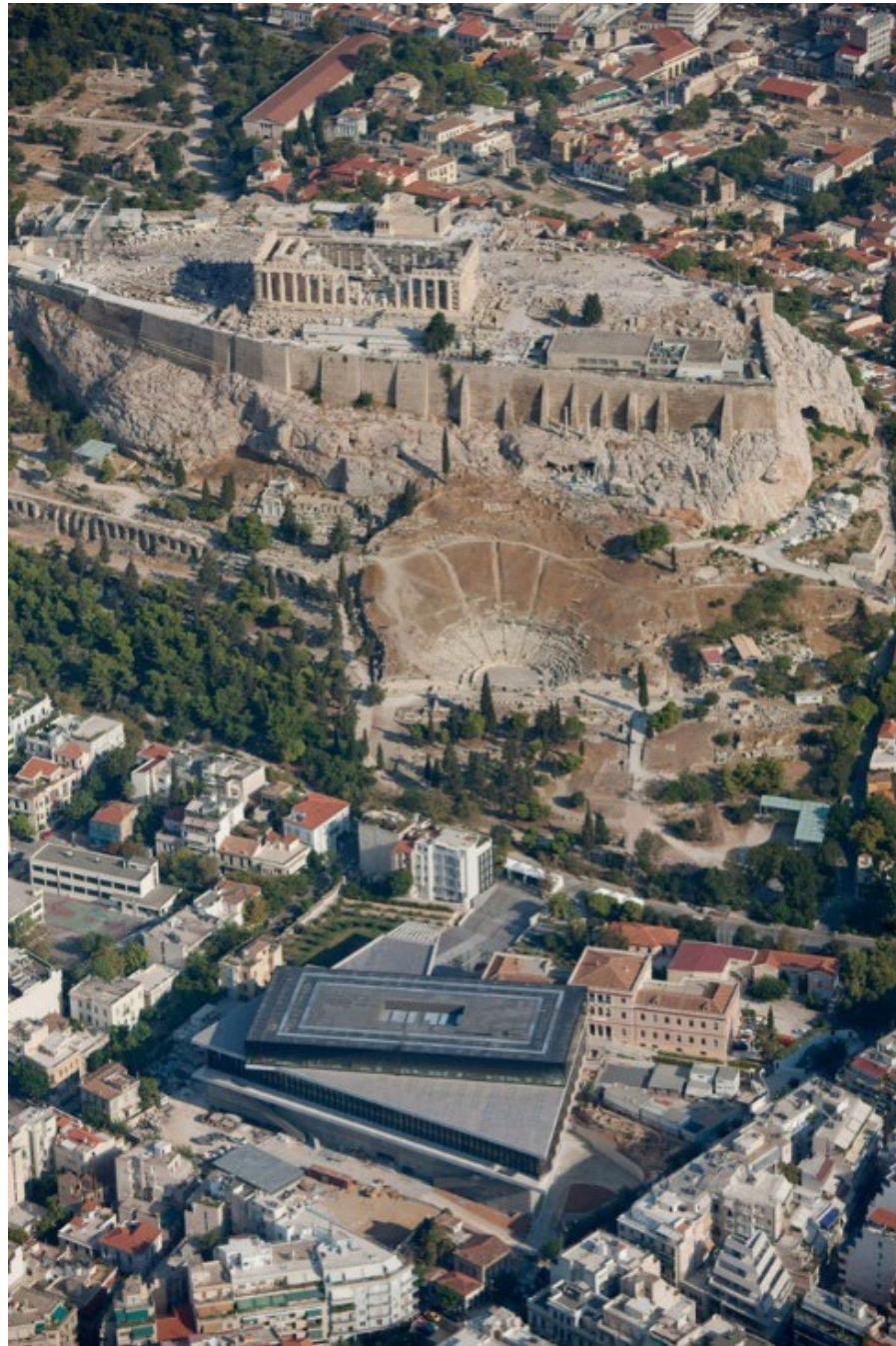




Bernard Tschumi, Acropolis Museum, Athens, 2009













Cino Zucchi, Residential buildings, Giudecca, Venice, 2003







Santiago Calatrava, Ponte della Costituzione, Venice, 2008





Antonio da Ponte, Ponte di Rialto, 1591



Eugenio Miozzi, Ponte dell'Accademia, 1933



Eugenio Miozzi, Ponte degli Scalzi, 1934



Alfred Neville, Ponte degli Scalzi, 1858













Studio Gang,  
Aqua Tower,  
Chicago, 2010















Diller and Scofidio,  
The High Line,  
New York, 2014















## Ornament: pattern and structure



Caryatids, Erechtheion, Athens, 406 B.C.

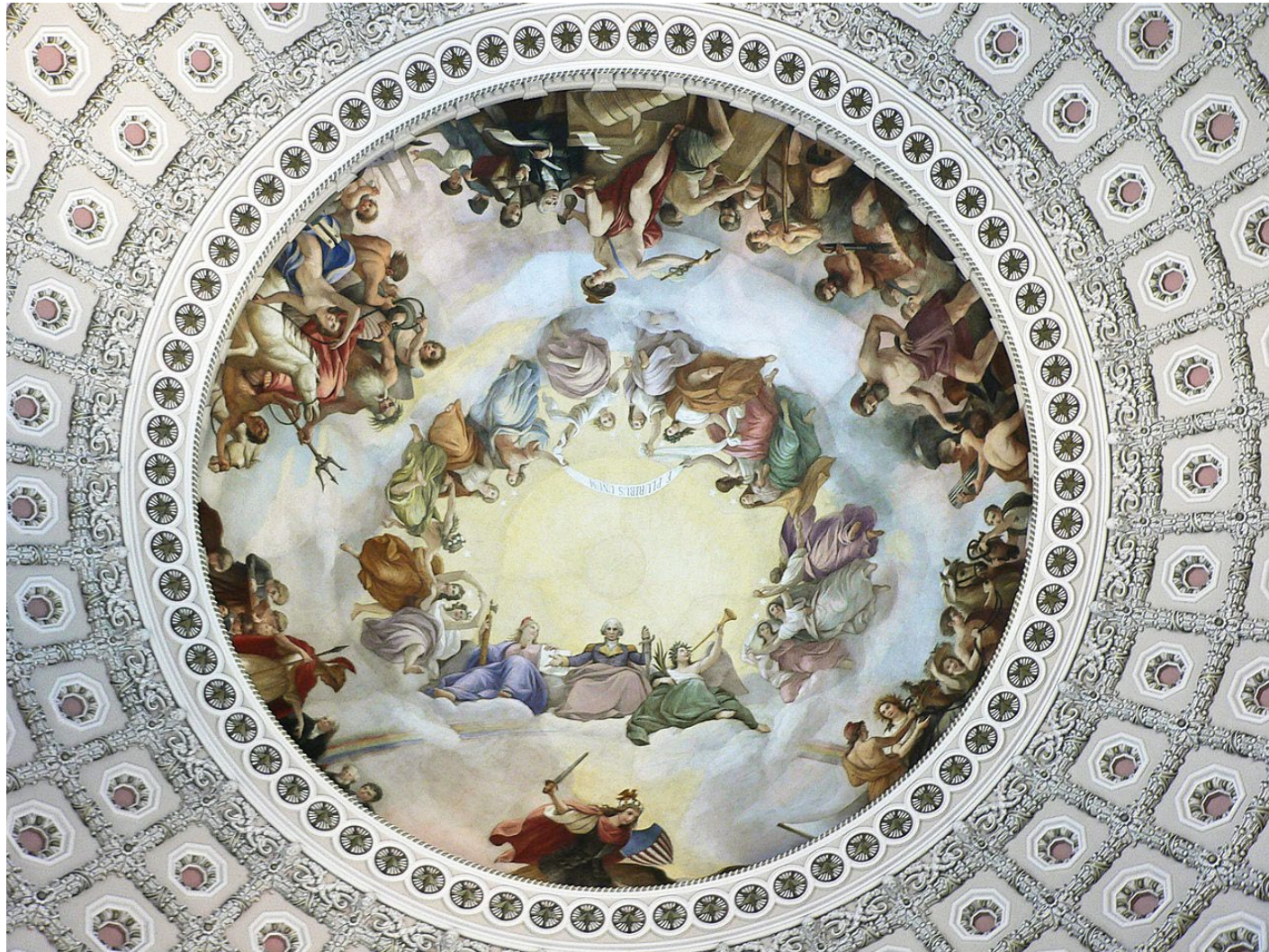


Bas-reliefs, Cathédrale d'Amiens, 13th C.





Constantino Brumidi, The Apotheosis of Washington, Capitol Building, 1865

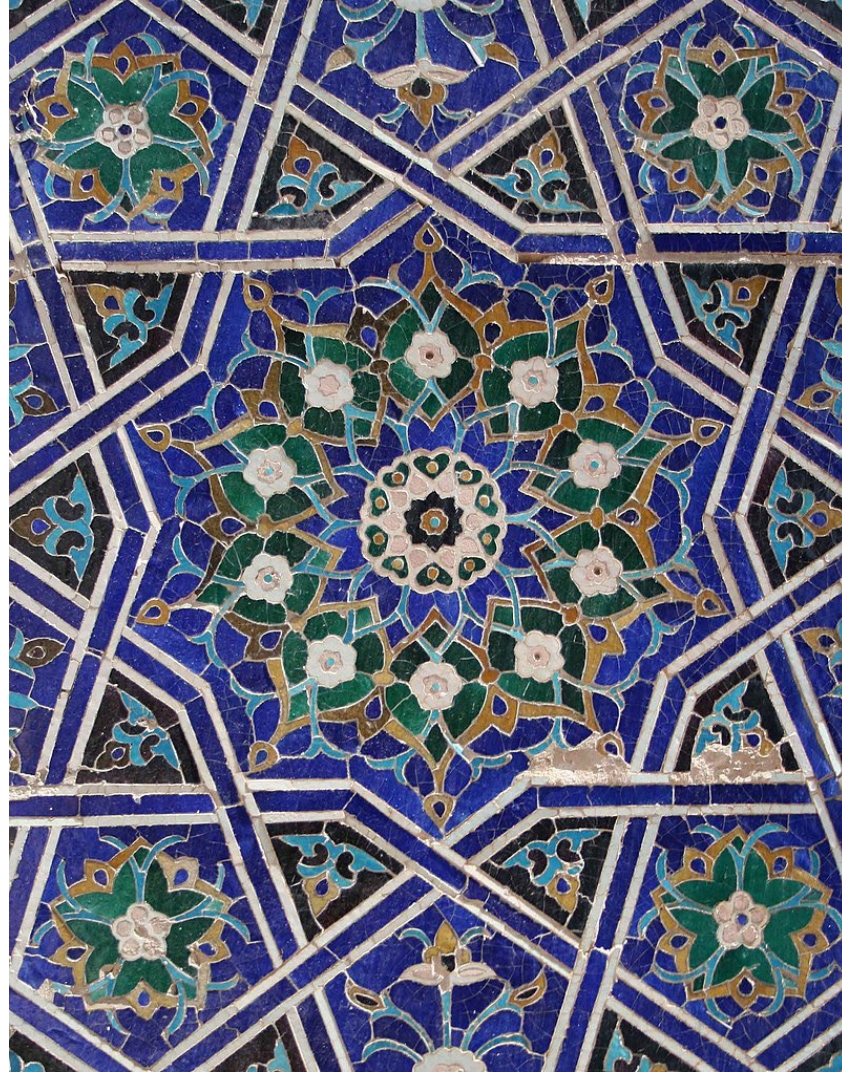




Umayyad Mosque, Damascus, 8th C.



Shah-i- Zinda, Samarkand, 16th C.



South Iwan, Jameh Mosque, Isfahan, 11th C.



Jean Nouvel, Philharmonie de Paris, 2015





Jean Nouvel, National Museum of Qatar, 2019





Manuelle Gautrand, Musée d'Art Moderne, Lille, 2009

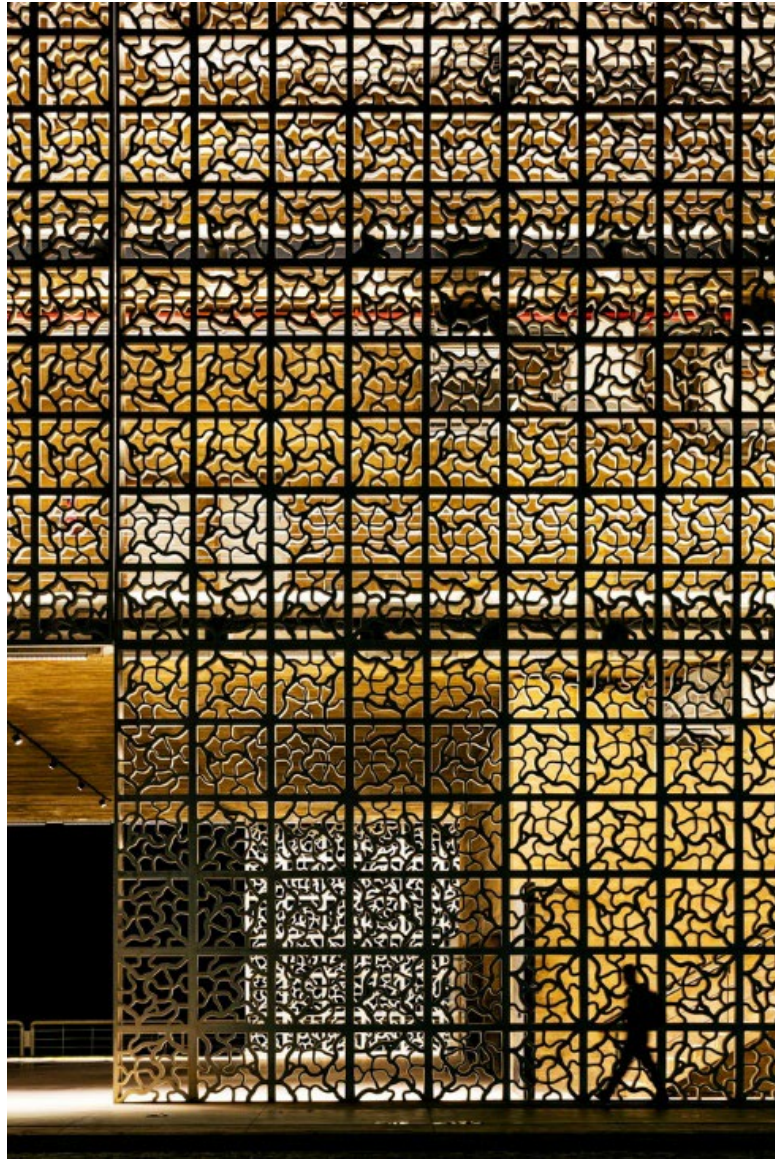


Foreign Office Architects, John Lewis Store, Leicester, 2007

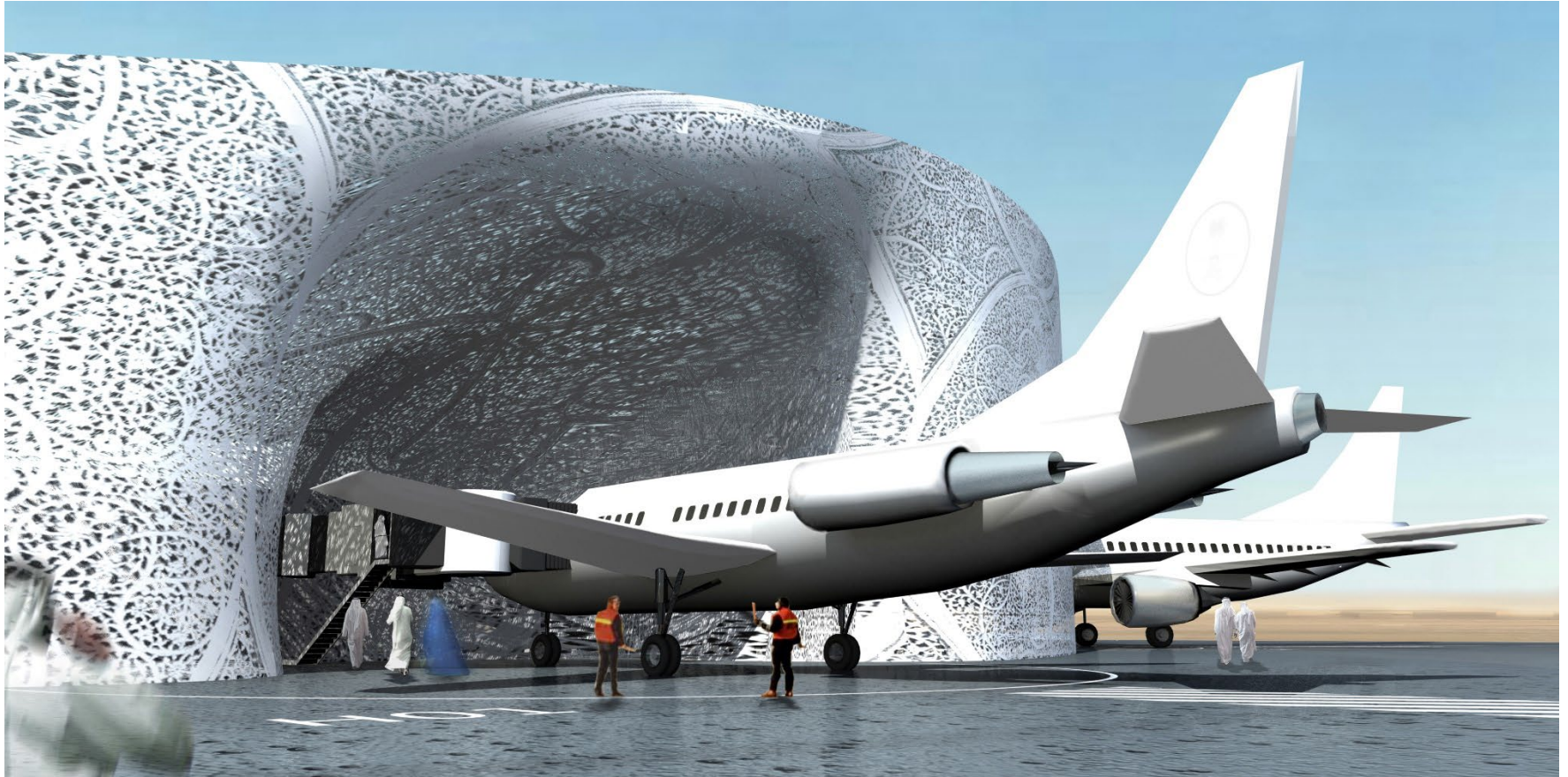


Brasil Arquitetura, Cais do Sertão Museum, Recife, 2018





OMA, Project for Jeddah Airport, 2005



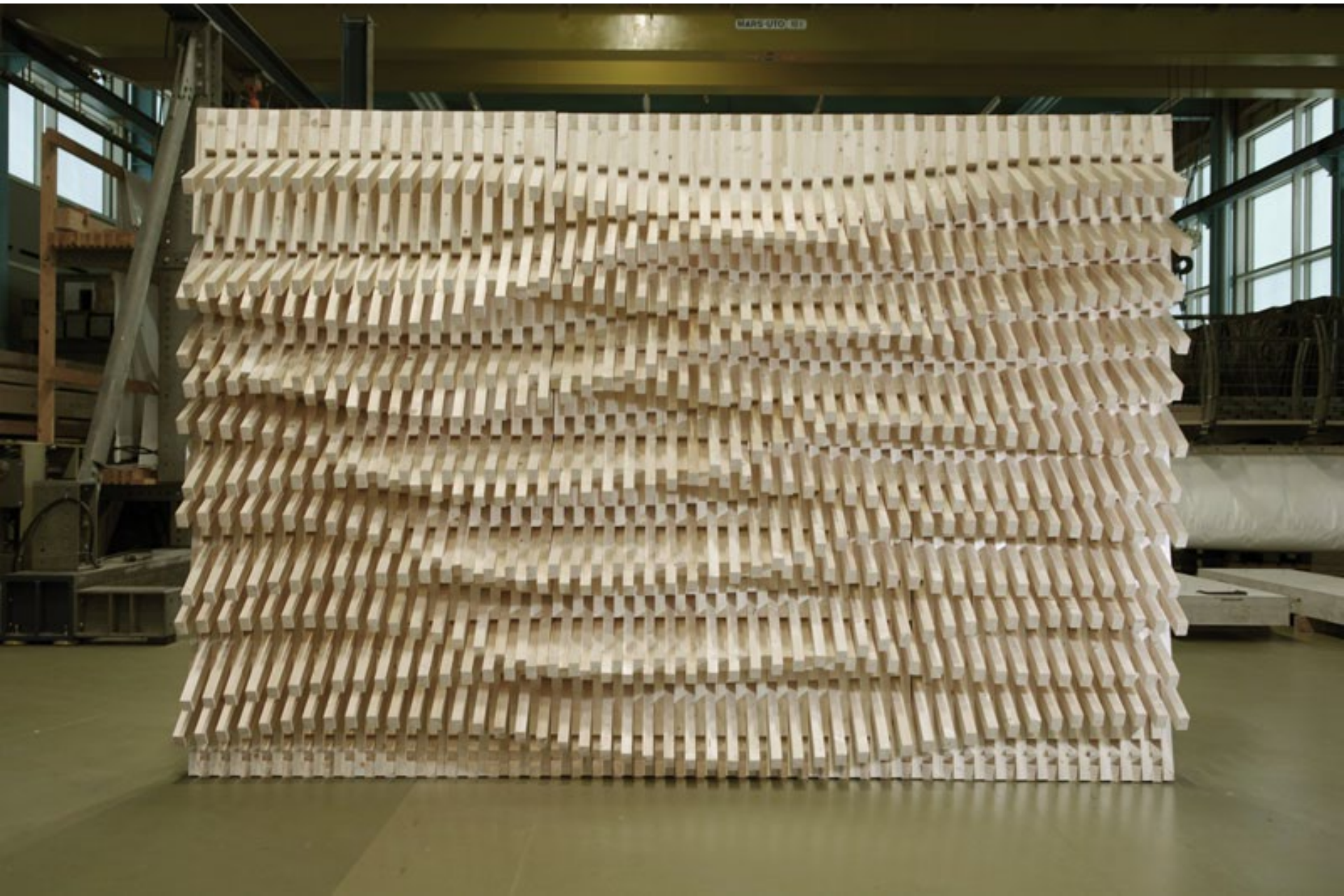




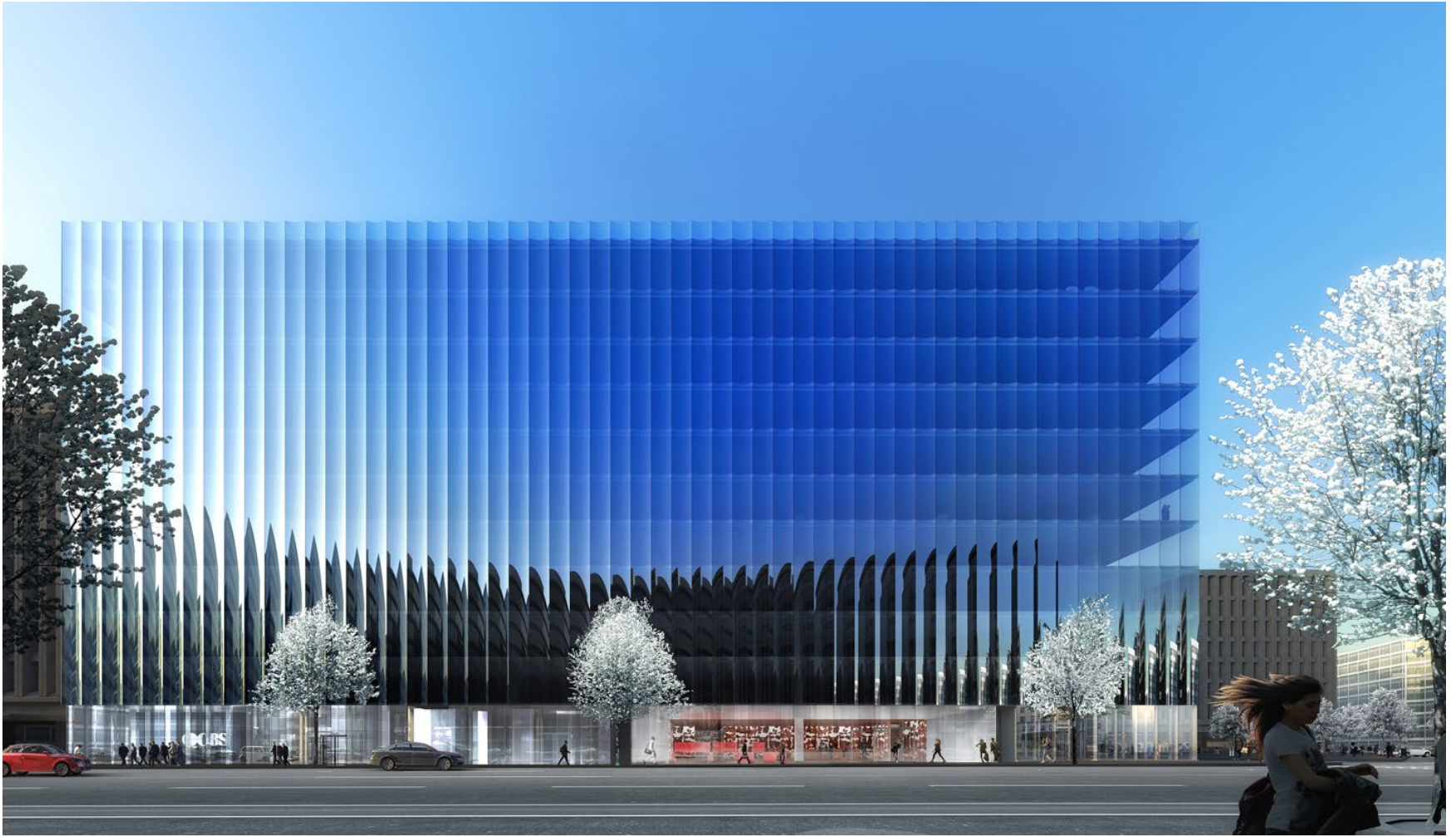
Gramazio & Kohler, The Sequential Wall, ETH Zurich, 2008







REX, 2050 M Street, Washington, DC, 2022

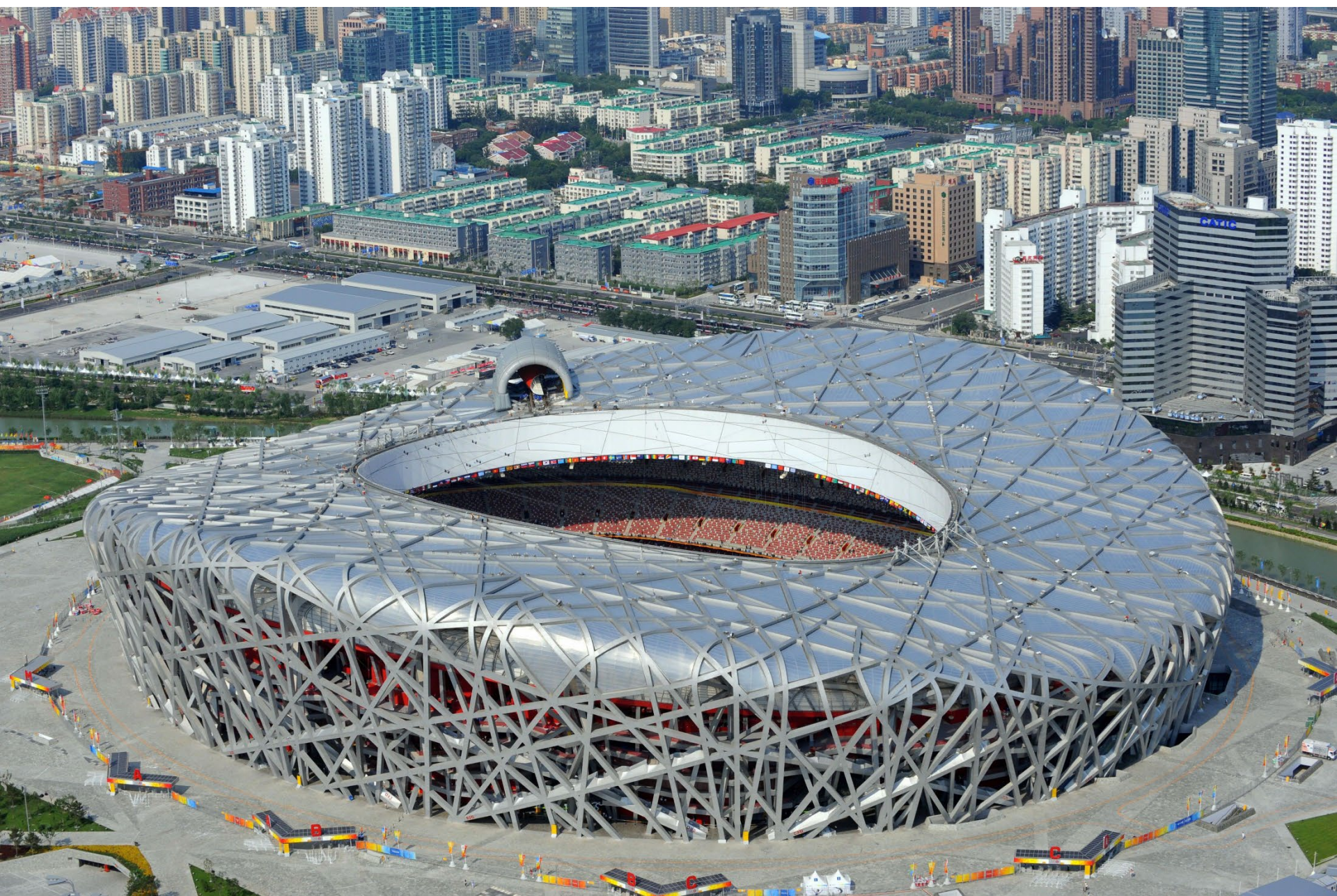




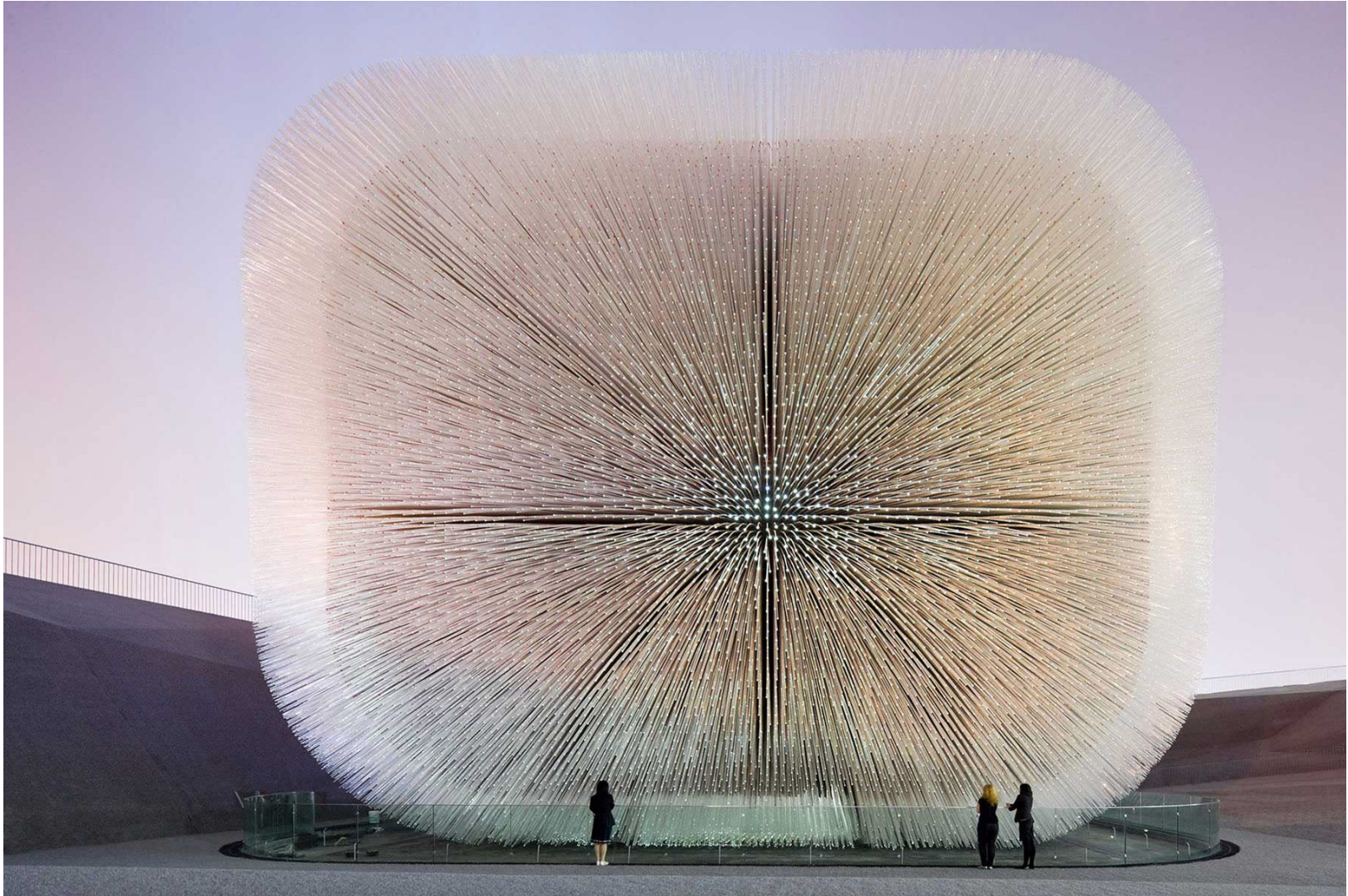


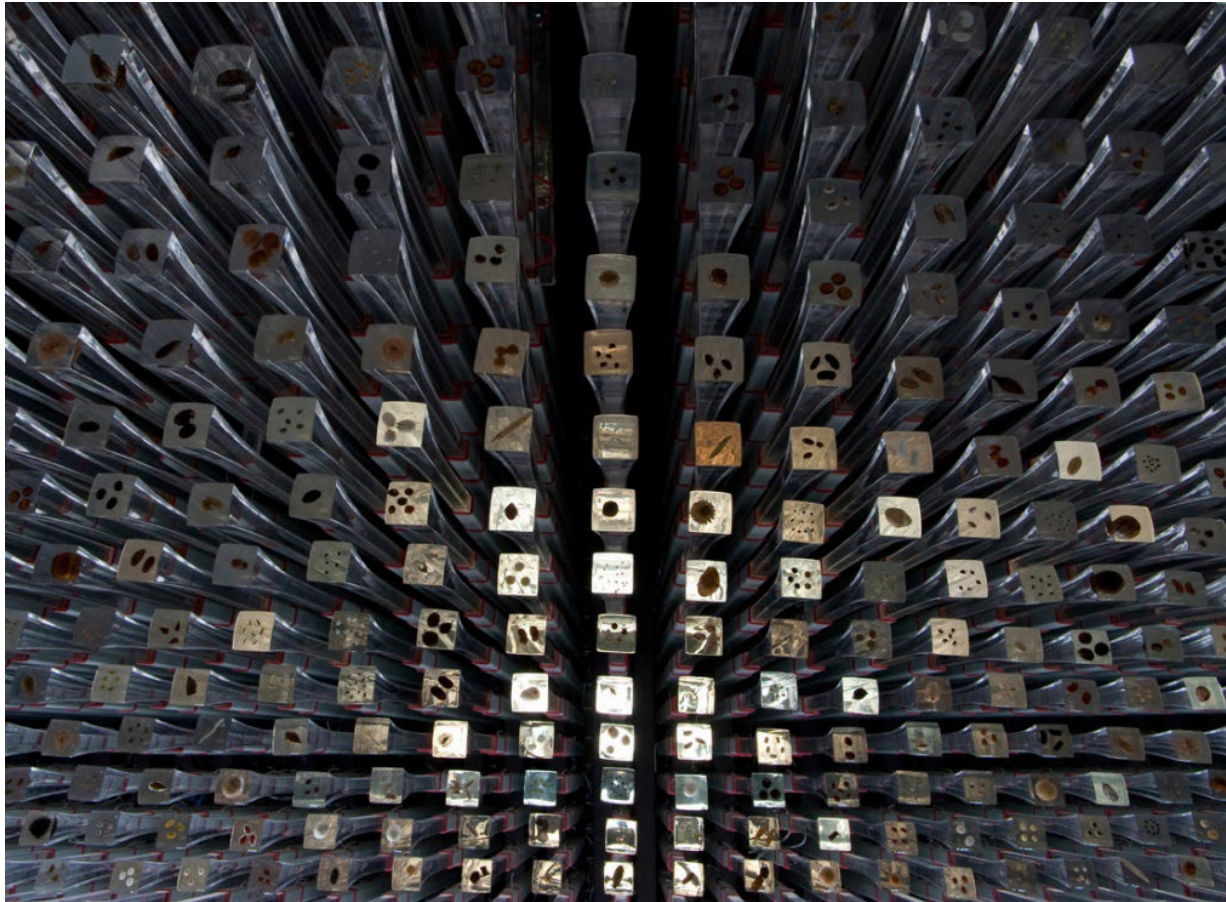
Herzog and de Meuron, Beijing National Stadium, 2008





Heatherwick Studio, UK pavilion, Shanghai Expo, 2010







Snøhetta, Wild Reindeer Centre, Hjerkinn, Norway, 2011

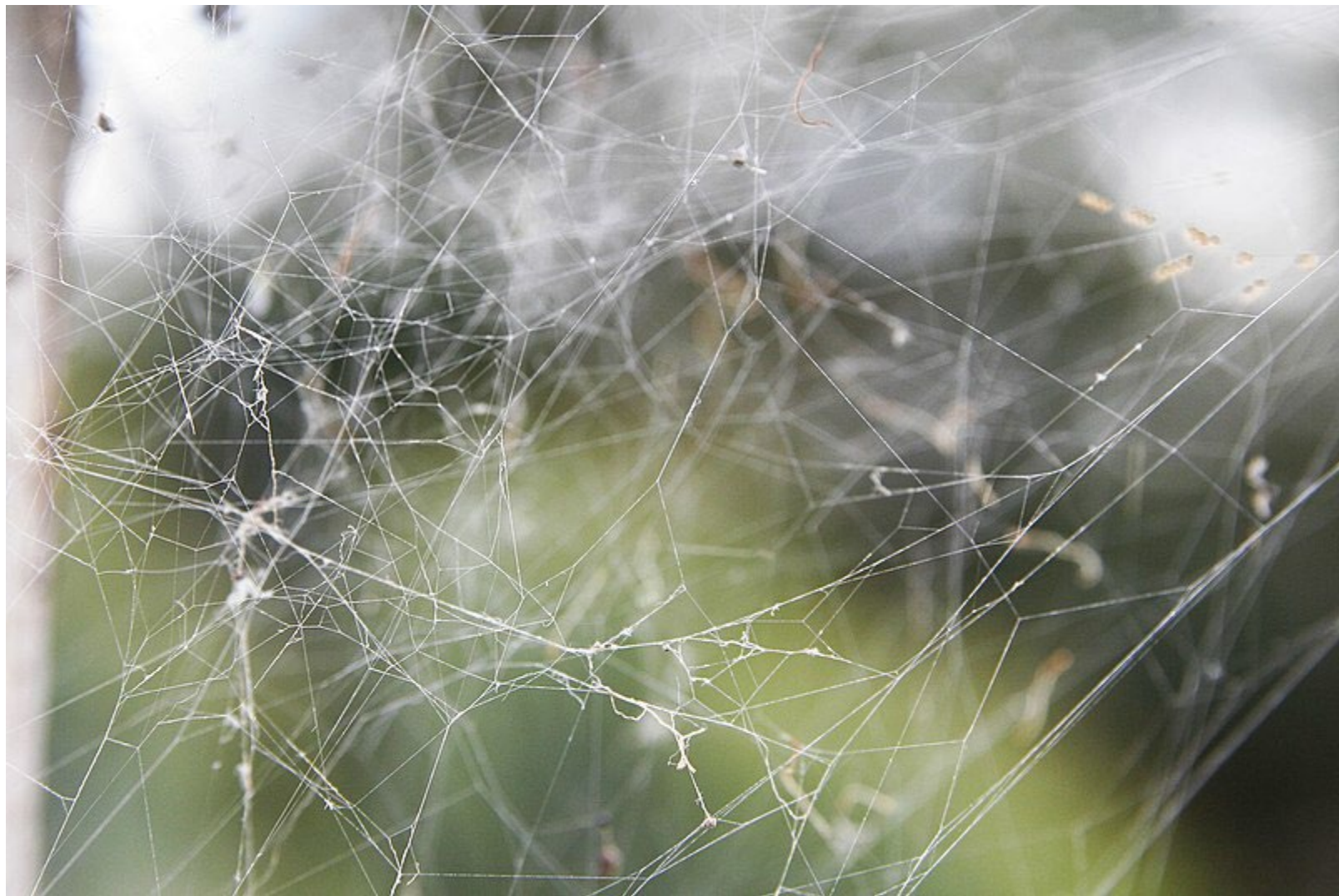




LAB Architecture Studio, Melbourne, 2003

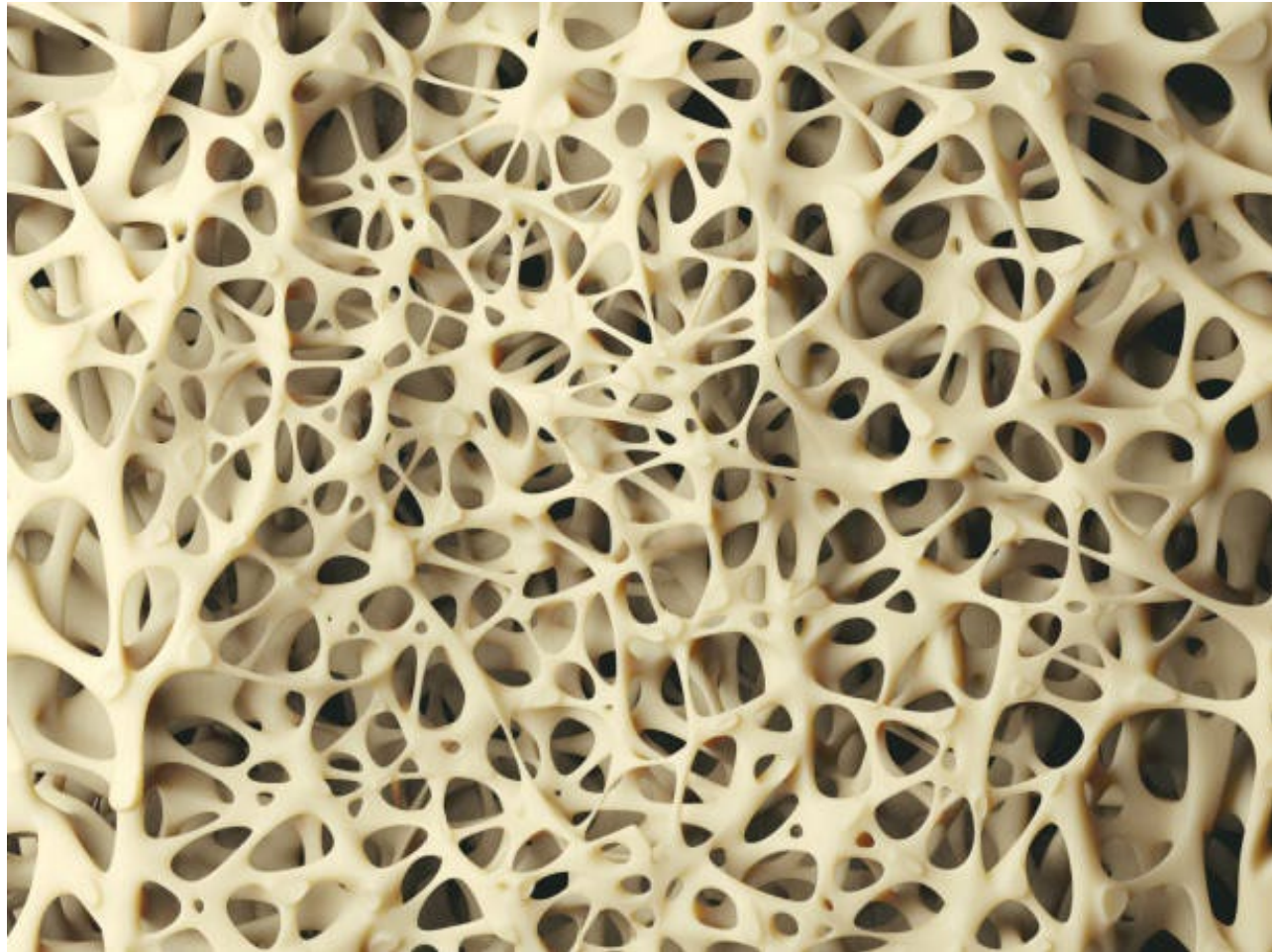






Masubichi & Faulders, Airspace, Tokyo, 2007





## Studio Gang, Hotel, Denver, 2022



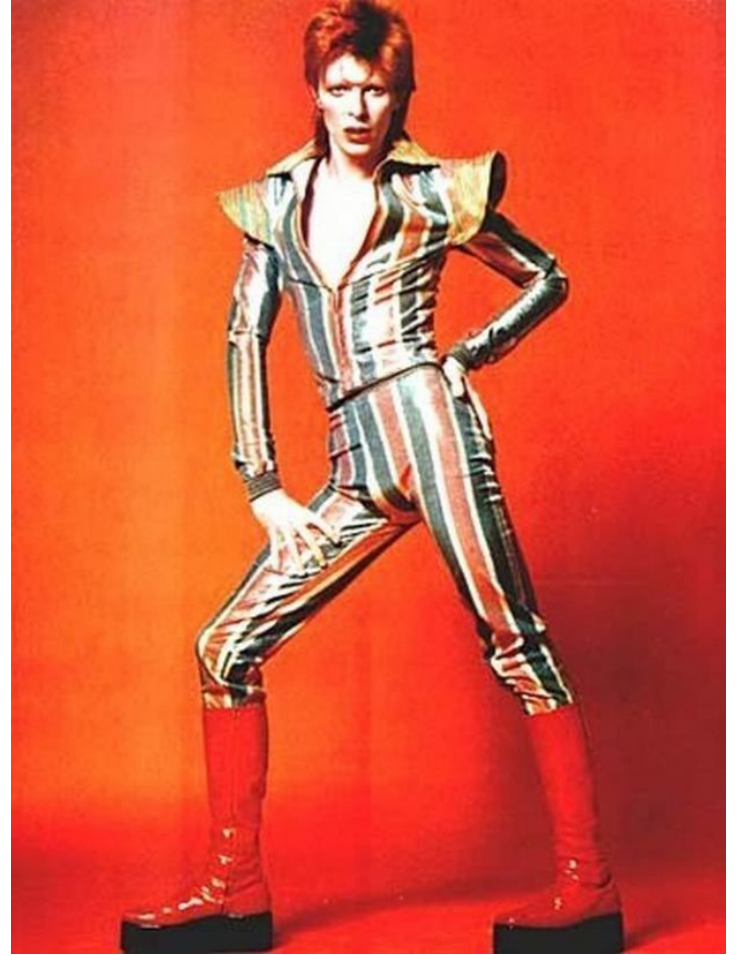




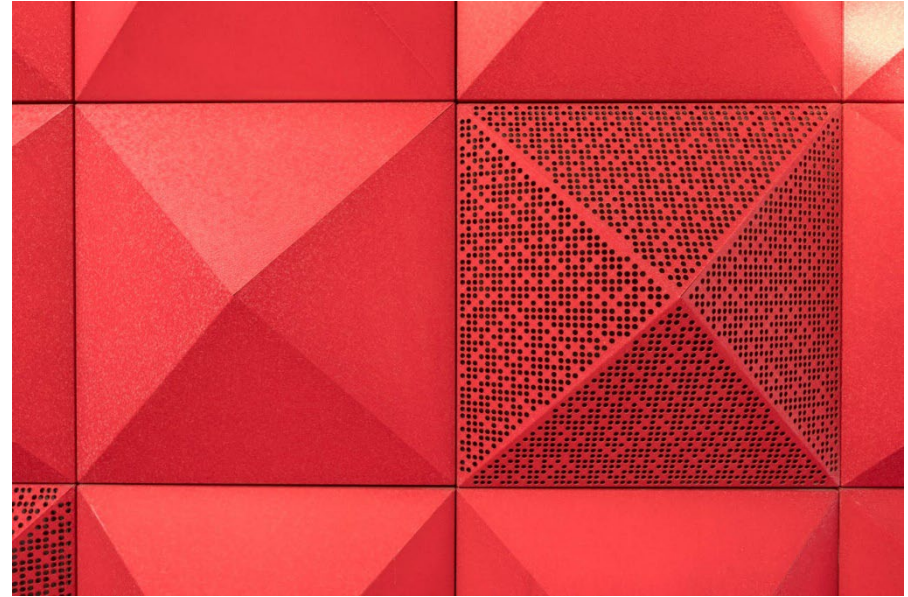
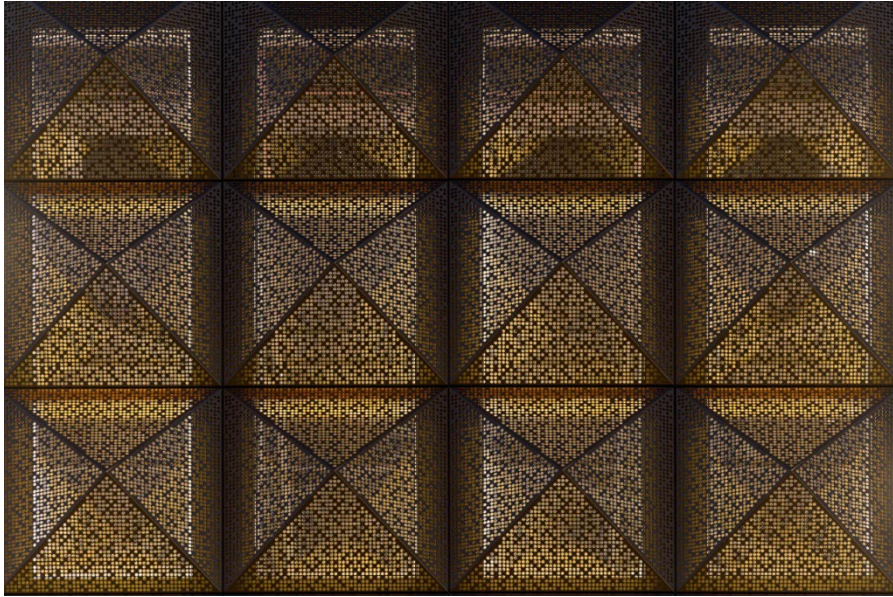


MDRDV, Museum of Rock, Roskilde, Denmark, 2016









UN Studio, Galleria, Seoul, S. Korea, 2010

