



*Land Conservation in Maine  
Some History and Reflections on  
the Future*

*January 17, 2024*

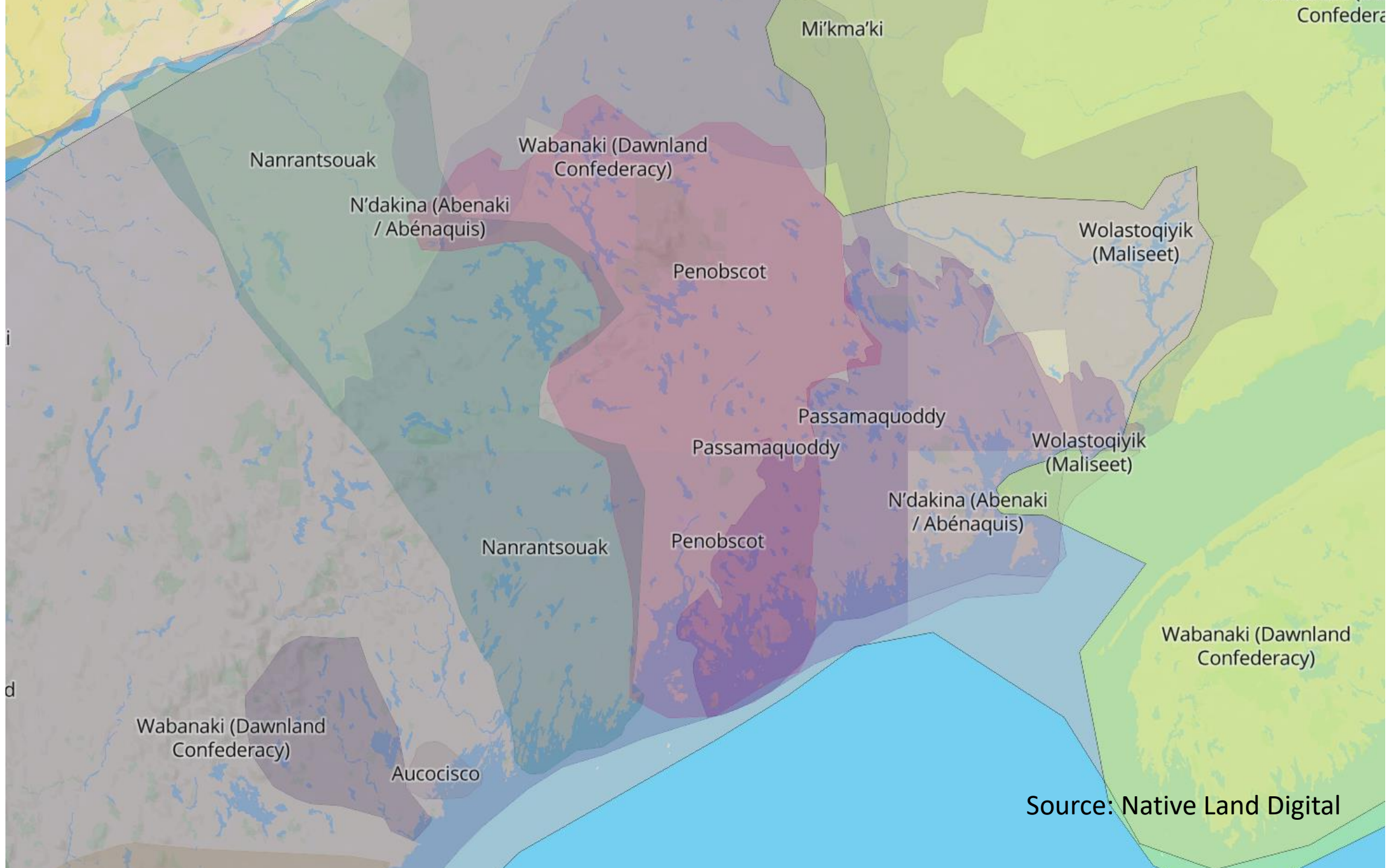
*Presented by Tim Glidden*

*Senior College – Winter Wisdom*

The Brunswick-Topsham Land Trust acknowledges that our work takes place on the traditional land of the Wabanaki people. We recognize that these lands were not given up freely but taken by Europeans through forced displacement. This displacement caused cultural and physical devastation to Indigenous people with repercussions that continue to this day.

We honor and respect the Wabanaki people who have stewarded the lands and natural resources in our area for generations. We affirm our responsibility to build meaningful relationships with our Wabanaki neighbors in caring for these lands now and into the future.

We understand that this statement does not rectify the lasting harms experienced by the Wabanaki people. We recognize that we have much work to do to create a more inclusive conservation community. This acknowledgement is an essential beginning.



Mi'kma'ki

Confederacy

Nanrantsouak

Wabanaki (Dawnland Confederacy)

N'dakina (Abenaki / Abénaquis)

Penobscot

Wolastoqiyik (Maliseet)

Passamaquoddy

Passamaquoddy

Wolastoqiyik (Maliseet)

N'dakina (Abenaki / Abénaquis)

Nanrantsouak

Penobscot

Wabanaki (Dawnland Confederacy)

Aucocisco

Wabanaki (Dawnland Confederacy)

Source: Native Land Digital





Territories



Languages



Treaties

Search your address, or toggle switches above to add shapes. Click around! [Think critically about this map.](#)

Search

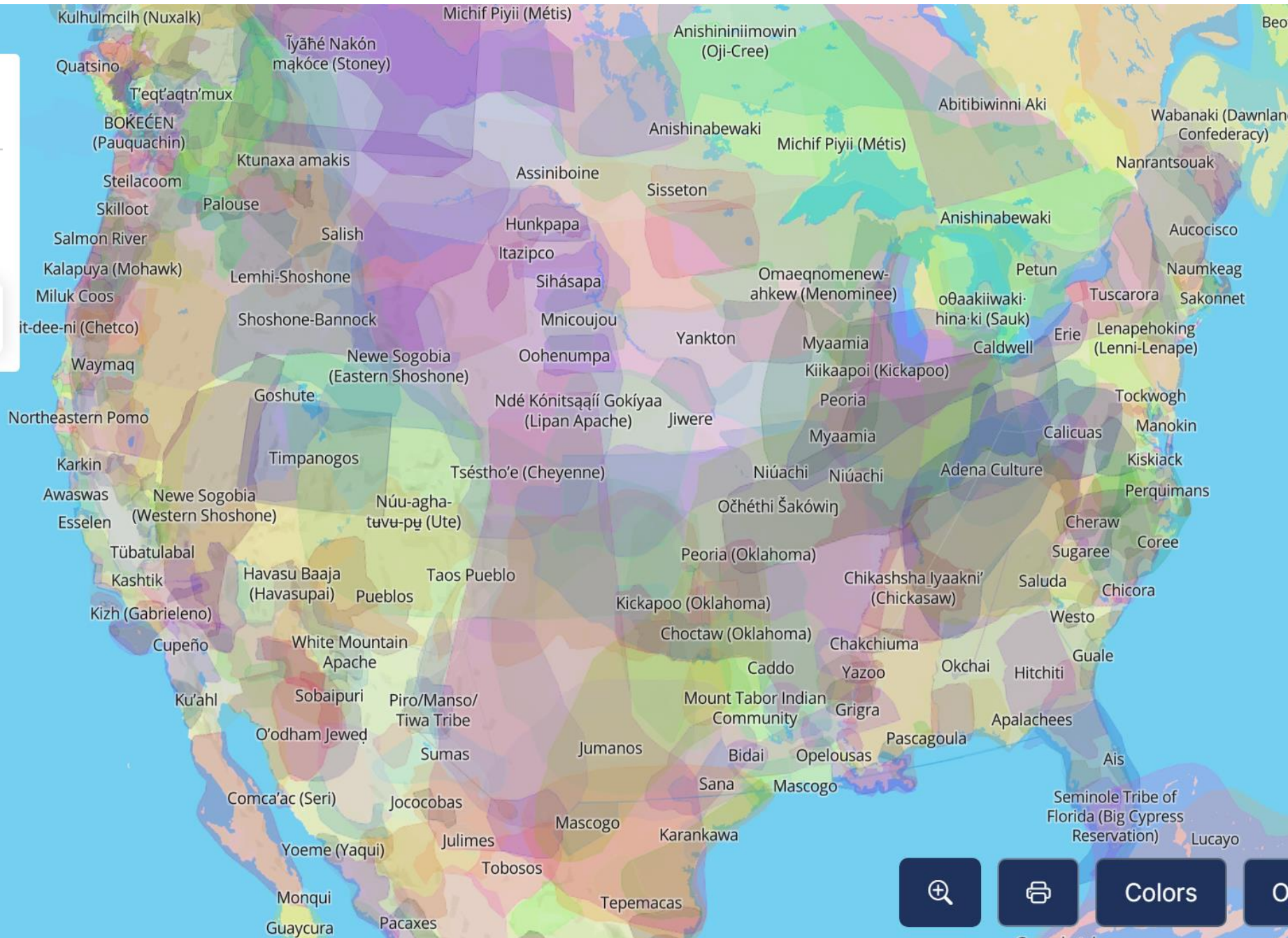
Territories



Languages



Treaties



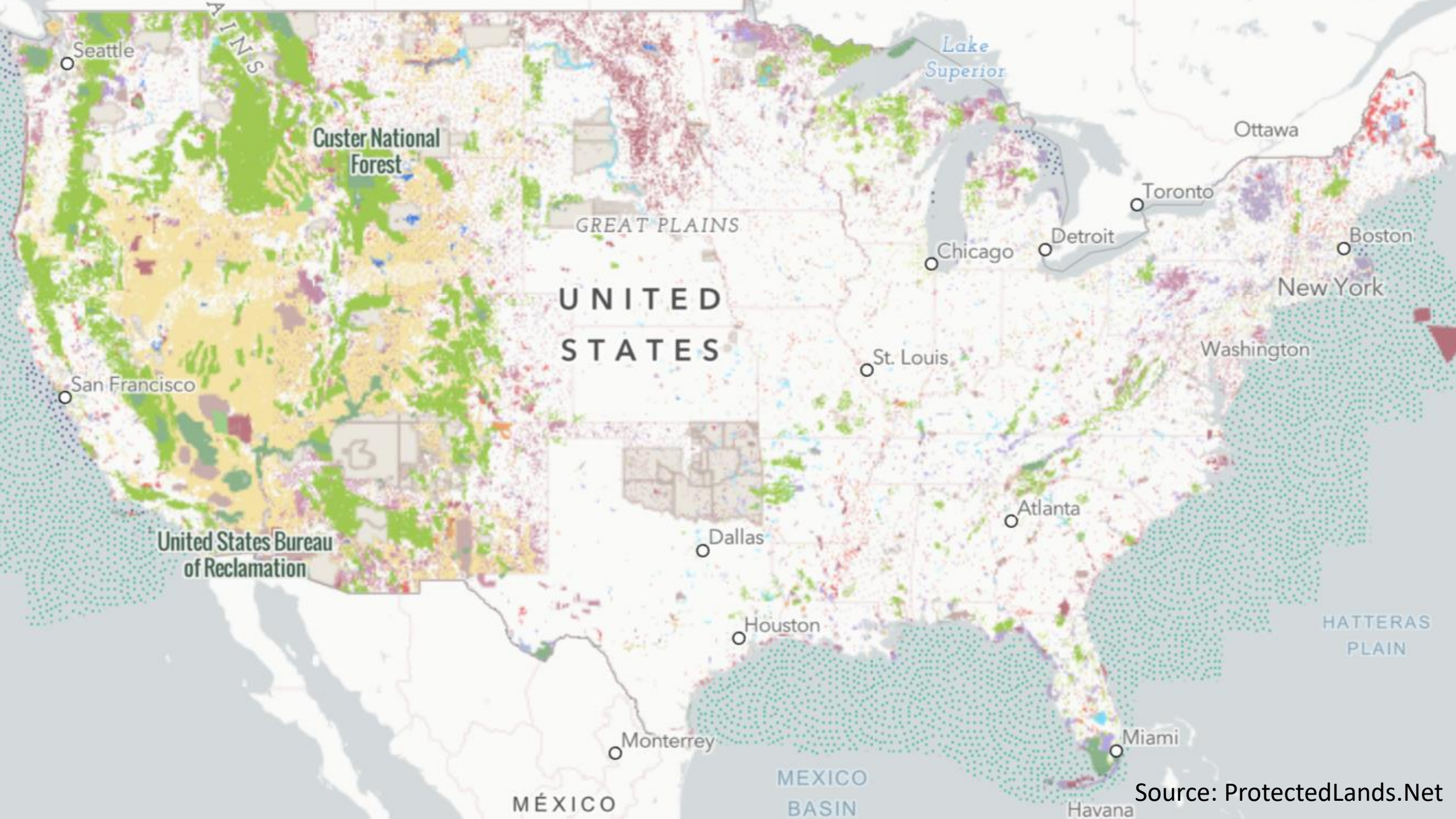
Colors



[https://www.slate.com/blogs/the\\_vault/2014/06/17/interactive\\_map\\_loss\\_of\\_indian\\_land.html](https://www.slate.com/blogs/the_vault/2014/06/17/interactive_map_loss_of_indian_land.html)

<https://www.youtube.com/watch?v=pJxrTzfG2bo>

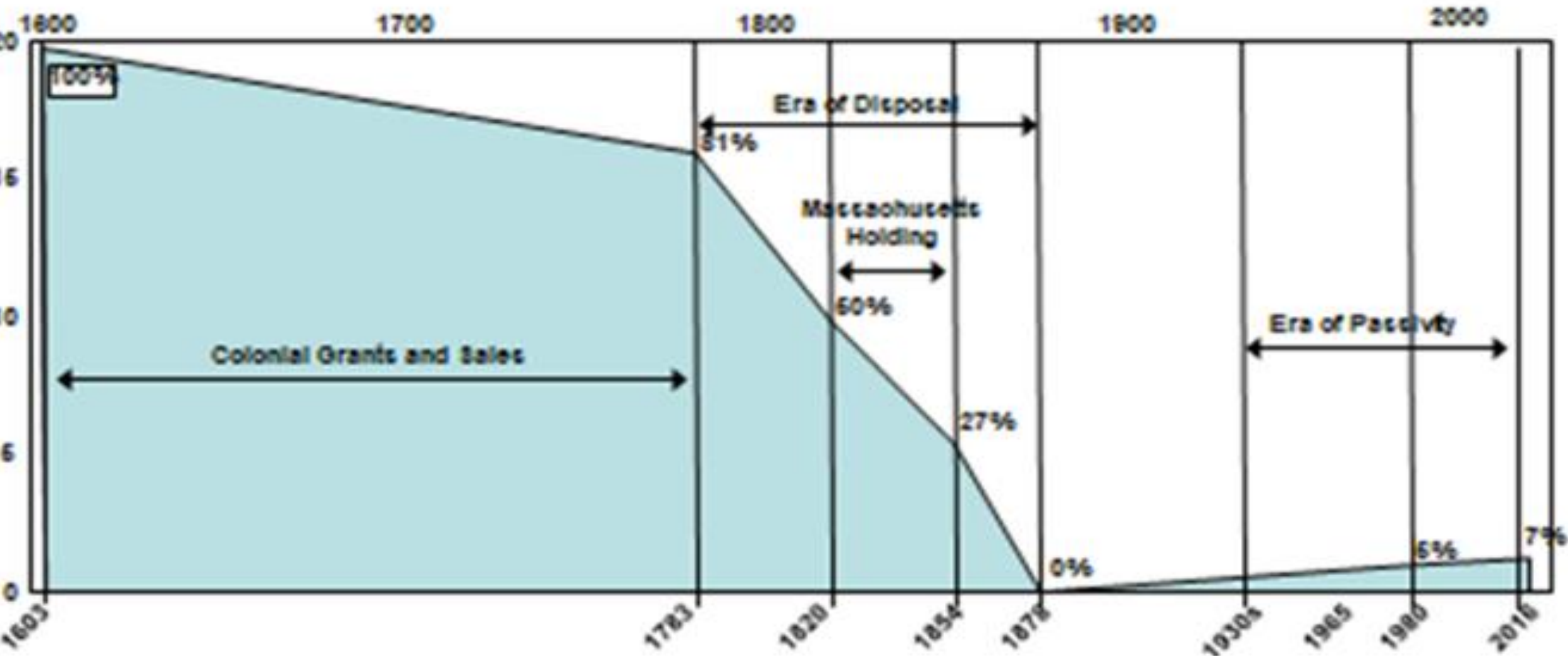




Source: ProtectedLands.Net

# History of Public Ownership in Maine to 2016

Total Acres: 19,739,000

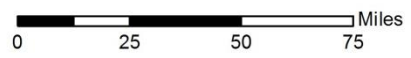
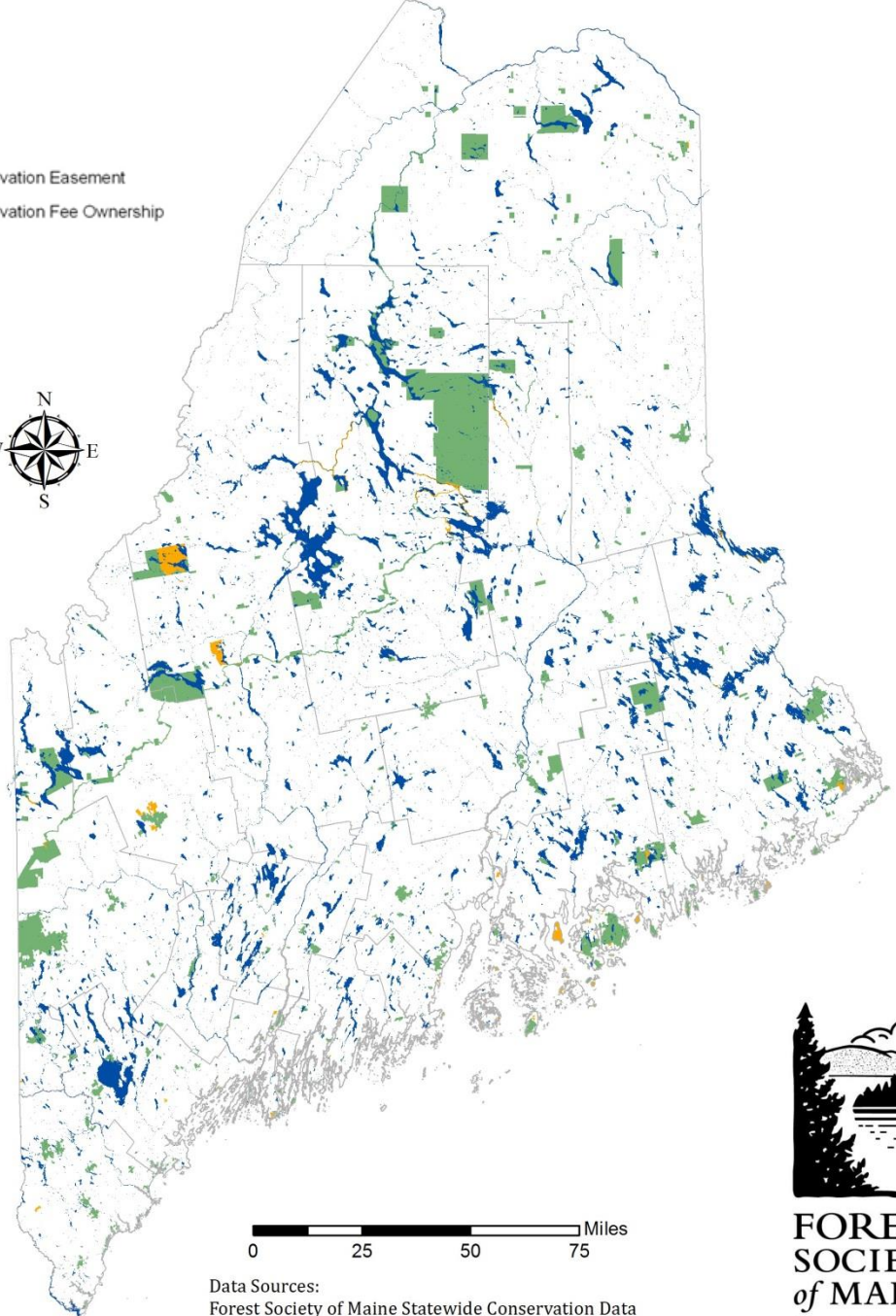




1987

**Legend**

-  Conservation Easement
-  Conservation Fee Ownership



Data Sources:  
Forest Society of Maine Statewide Conservation Data  
Maine Office of GIS



Map: 05.18.2018

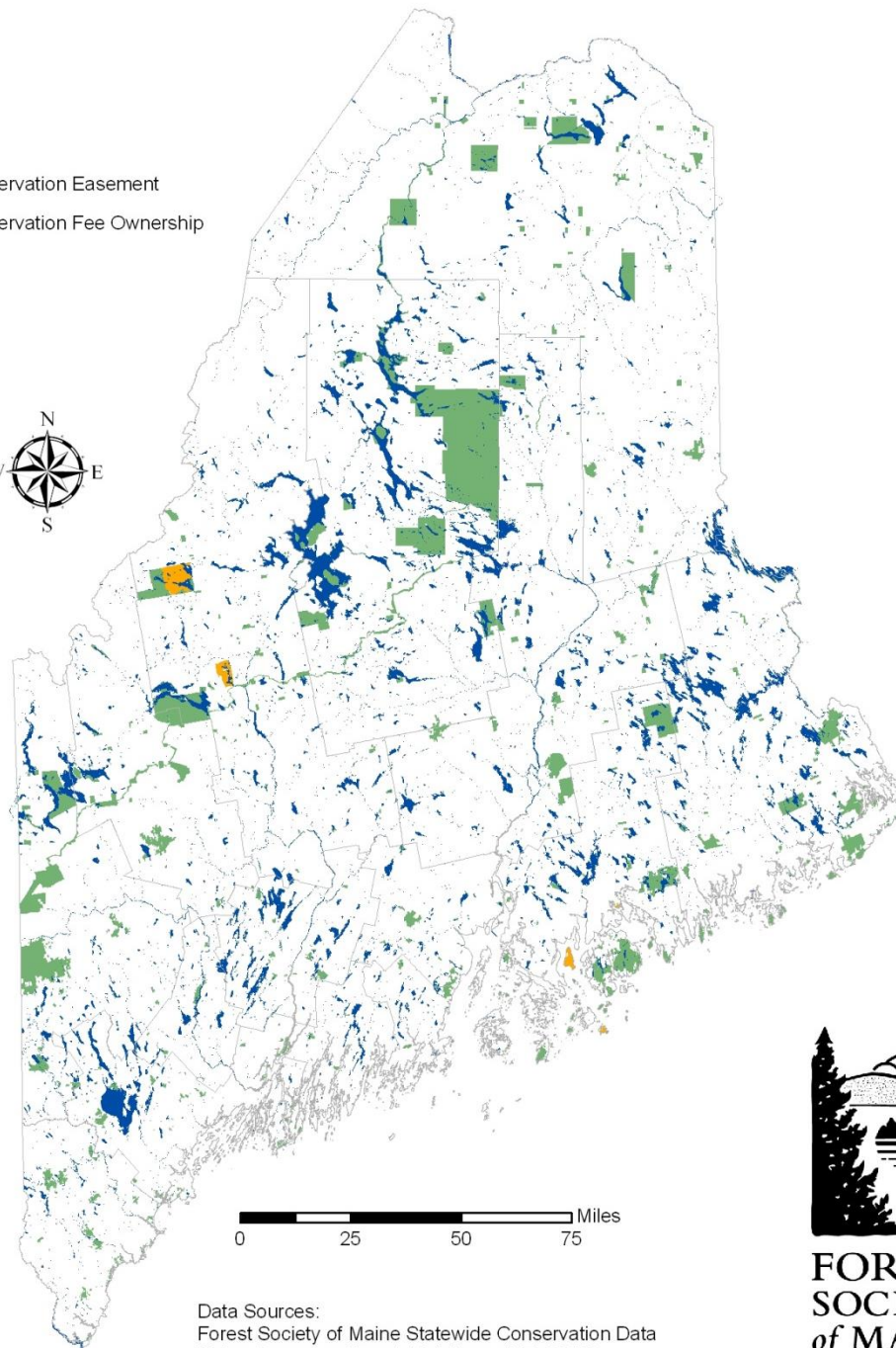


**Legend**

- Conservation Easement
- Conservation Fee Ownership



1997



Data Sources:  
Forest Society of Maine Statewide Conservation Data  
Maine Conserved Lands Database (ME-OGIS)  
2005 Forestland Owners (J.W. Sewall Co.)



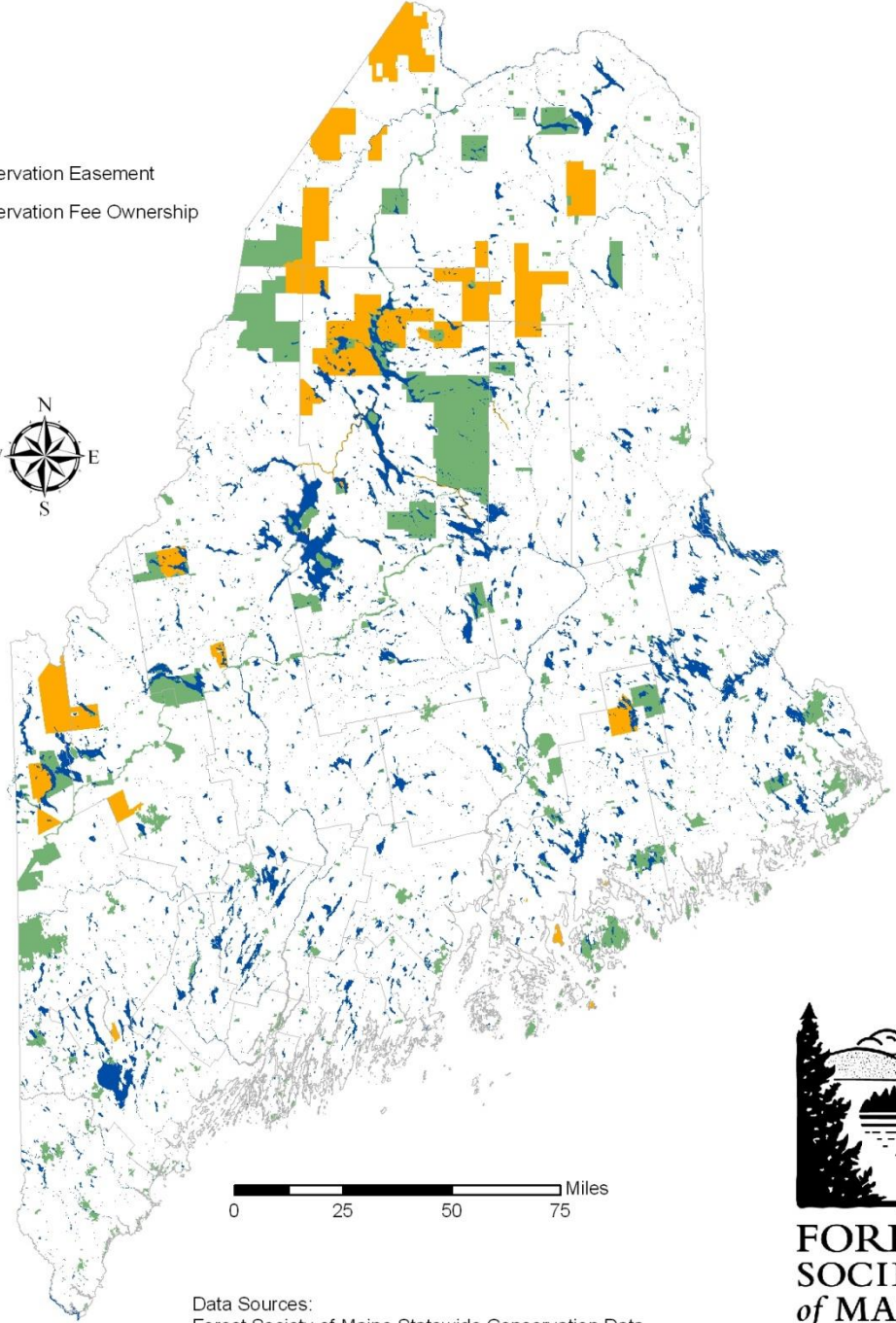
**FOREST  
SOCIETY  
of MAINE**

Map: 12/6/2007

2002

**Legend**

-  Conservation Easement
-  Conservation Fee Ownership



Data Sources:  
Forest Society of Maine Statewide Conservation Data  
Maine Conserved Lands Database (ME-OGIS)



**FOREST  
SOCIETY  
of MAINE**

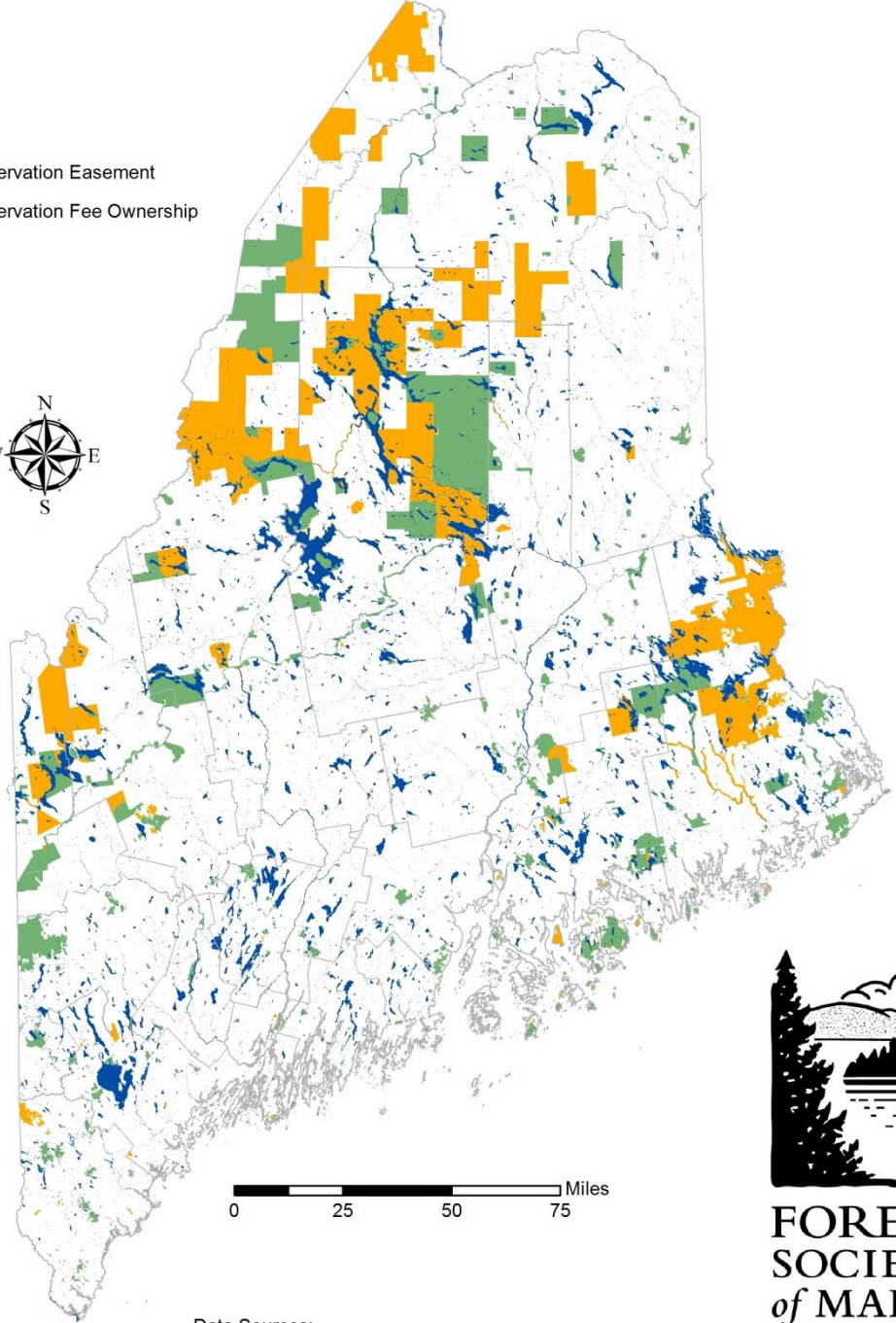
Map: 12/6/2007



2007

**Legend**

- Conservation Easement
- Conservation Fee Ownership



0 25 50 75 Miles

Data Sources:  
Forest Society of Maine Statewide Conservation Data



**FOREST  
SOCIETY  
of MAINE**

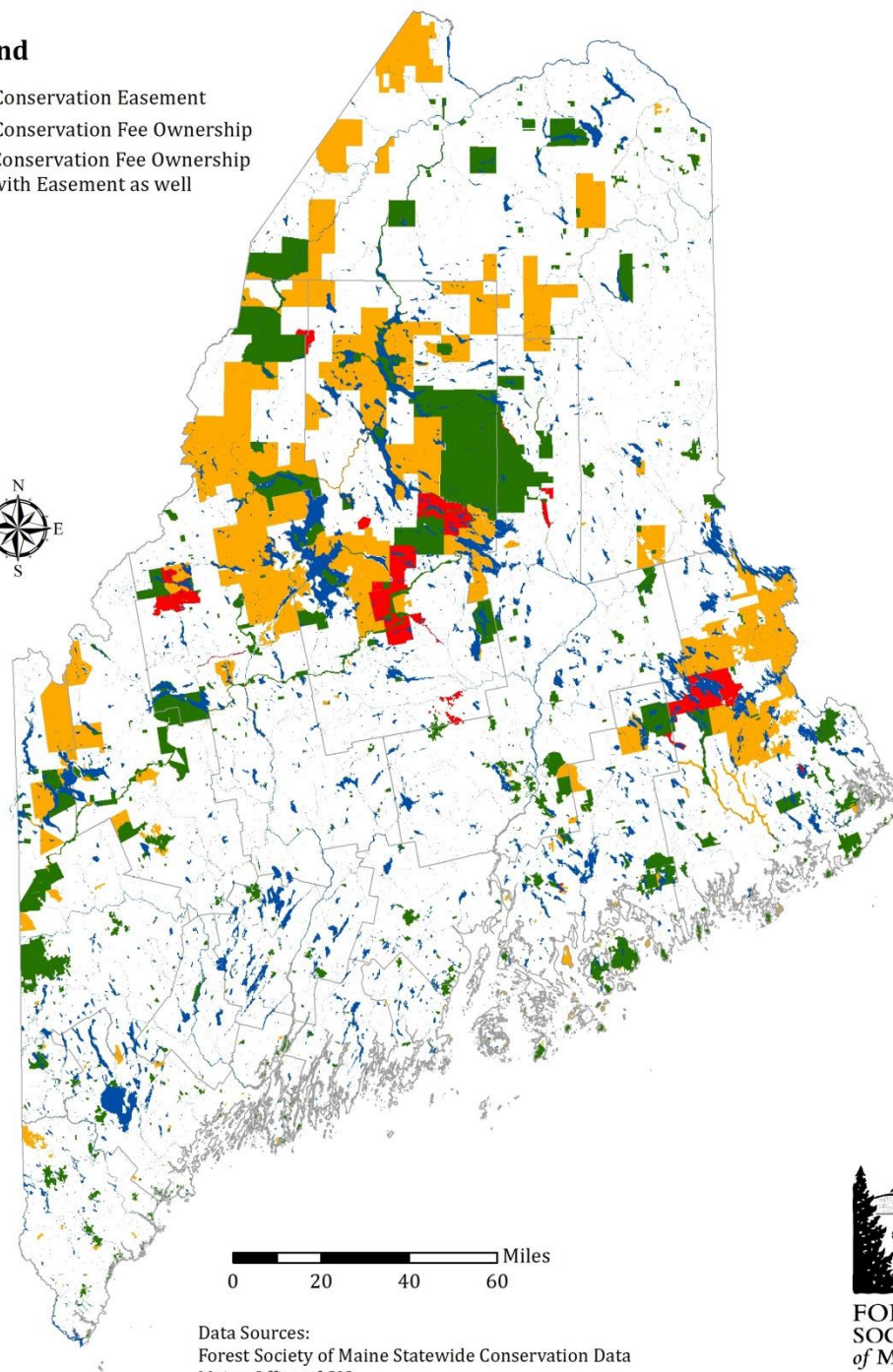
Map: 12/6/2007

**Legend**

- Conservation Easement
- Conservation Fee Ownership
- Conservation Fee Ownership with Easement as well



2017



0 20 40 60 Miles

Data Sources:  
Forest Society of Maine Statewide Conservation Data  
Maine Office of GIS



FOREST  
SOCIETY  
of MAINE

Map: 1/19/2018

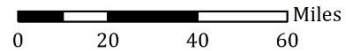
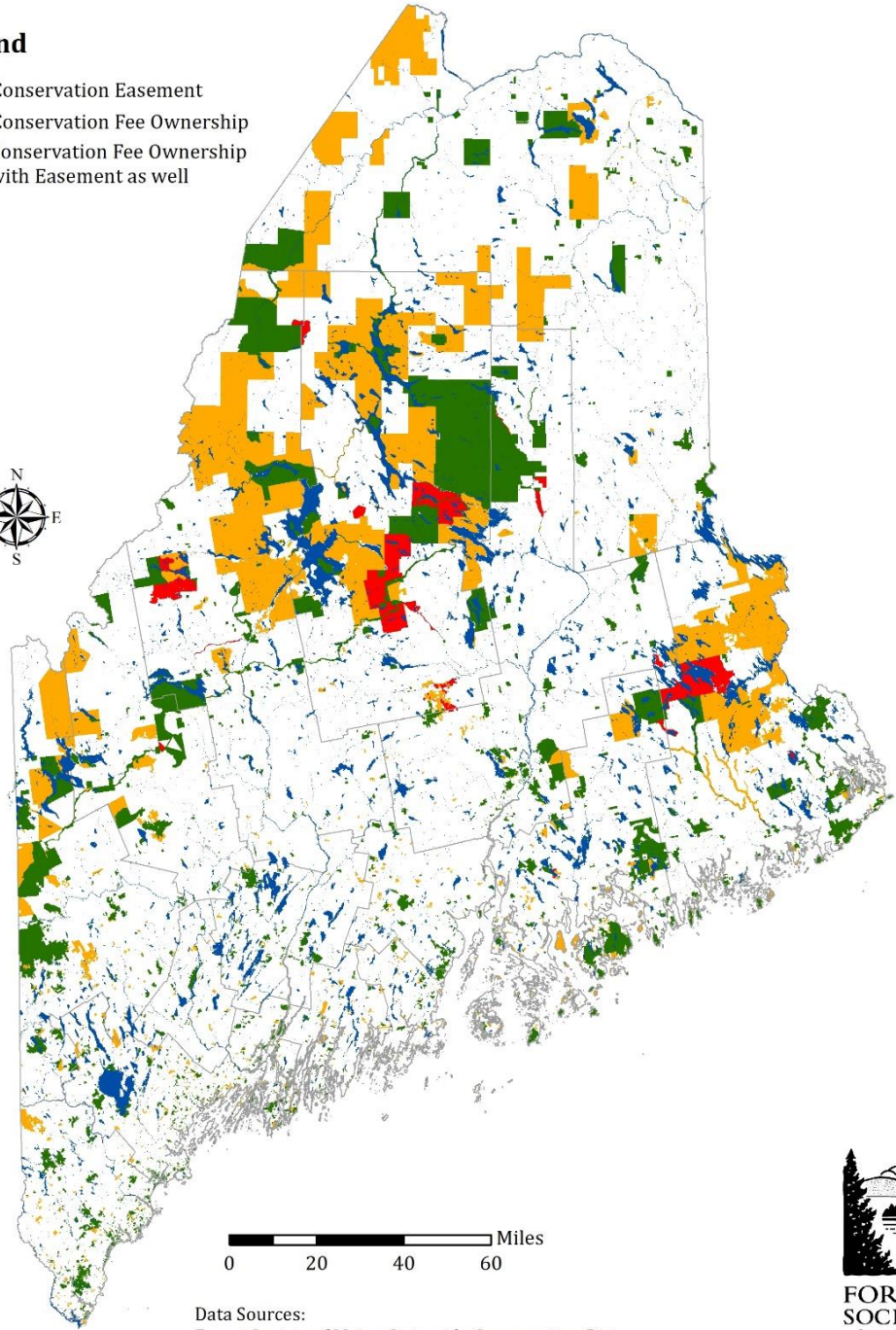


**Legend**

- Conservation Easement
- Conservation Fee Ownership
- Conservation Fee Ownership with Easement as well



**2022**



Data Sources:  
Forest Society of Maine Statewide Conservation Data  
Maine Office of GIS

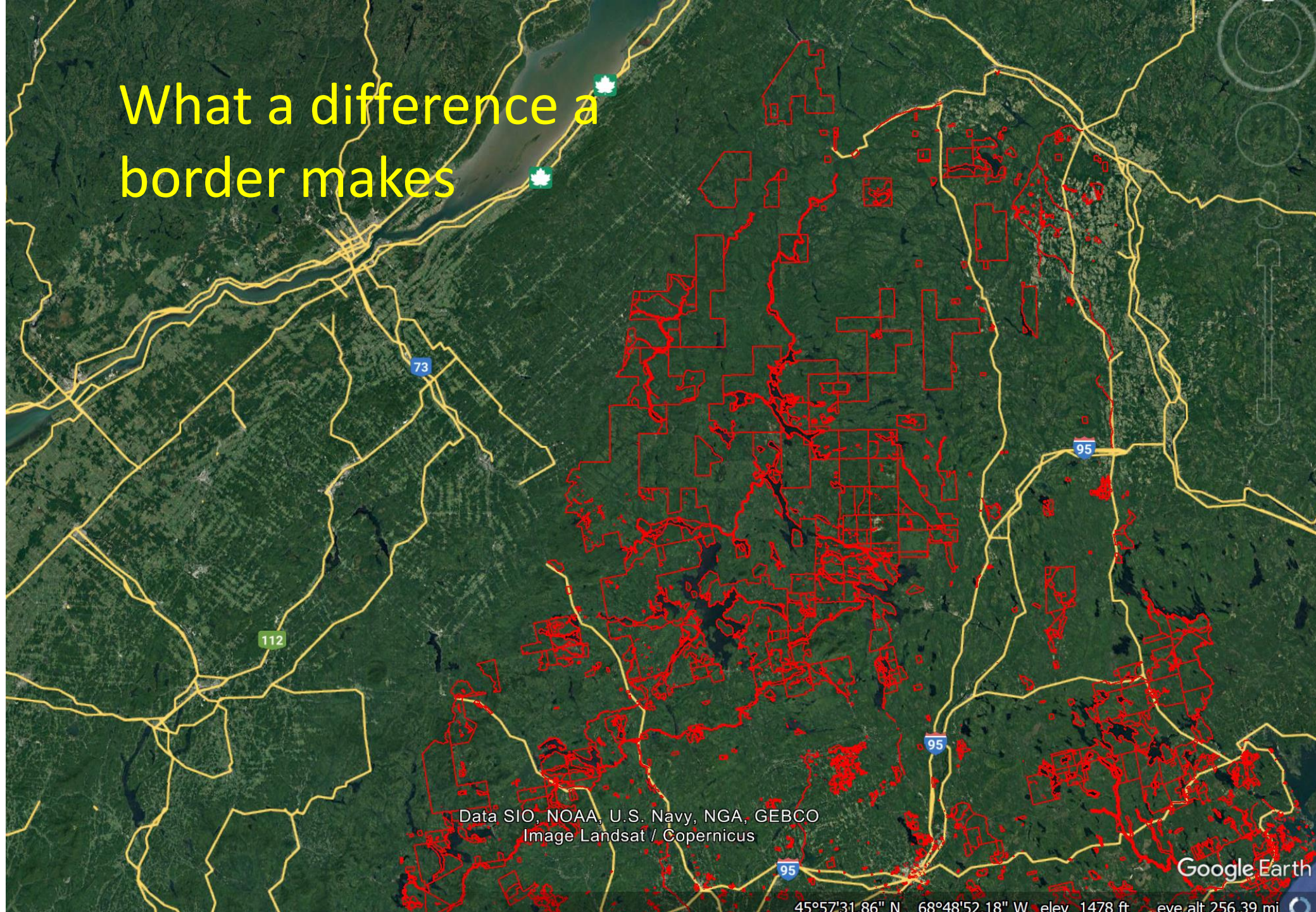


**FOREST  
SOCIETY  
of MAINE**

Map: 4/25/2022



What a difference a border makes



Data SIO, NOAA, U.S. Navy, NGA, GEBCO  
Image Landsat / Copernicus

Google Earth

45°57'31.86" N 68°48'52.18" W elev. 1478 ft eye alt 256.39 mi





## CONSERVED LANDS

[Alder Stream](#)

---

[Amazon –  
Musquash](#)

---

[Amherst  
Mountains  
Community  
Forest \(AMCF\)](#)

---

[Attean Pond](#)

---

[Bald Ledge,  
Bickford Hill, and  
Bickford Pond](#)

---

## Attean Pond

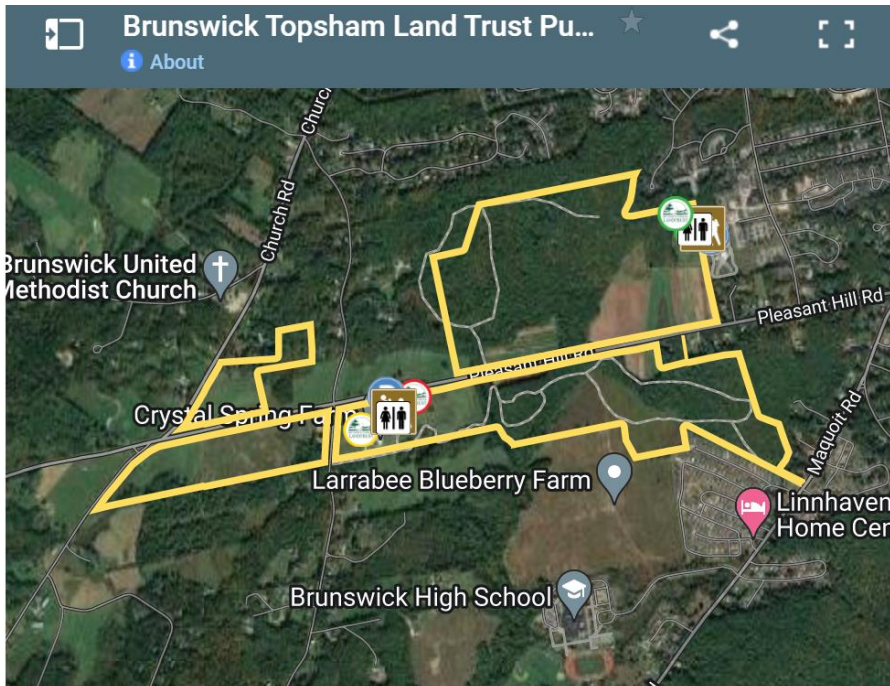




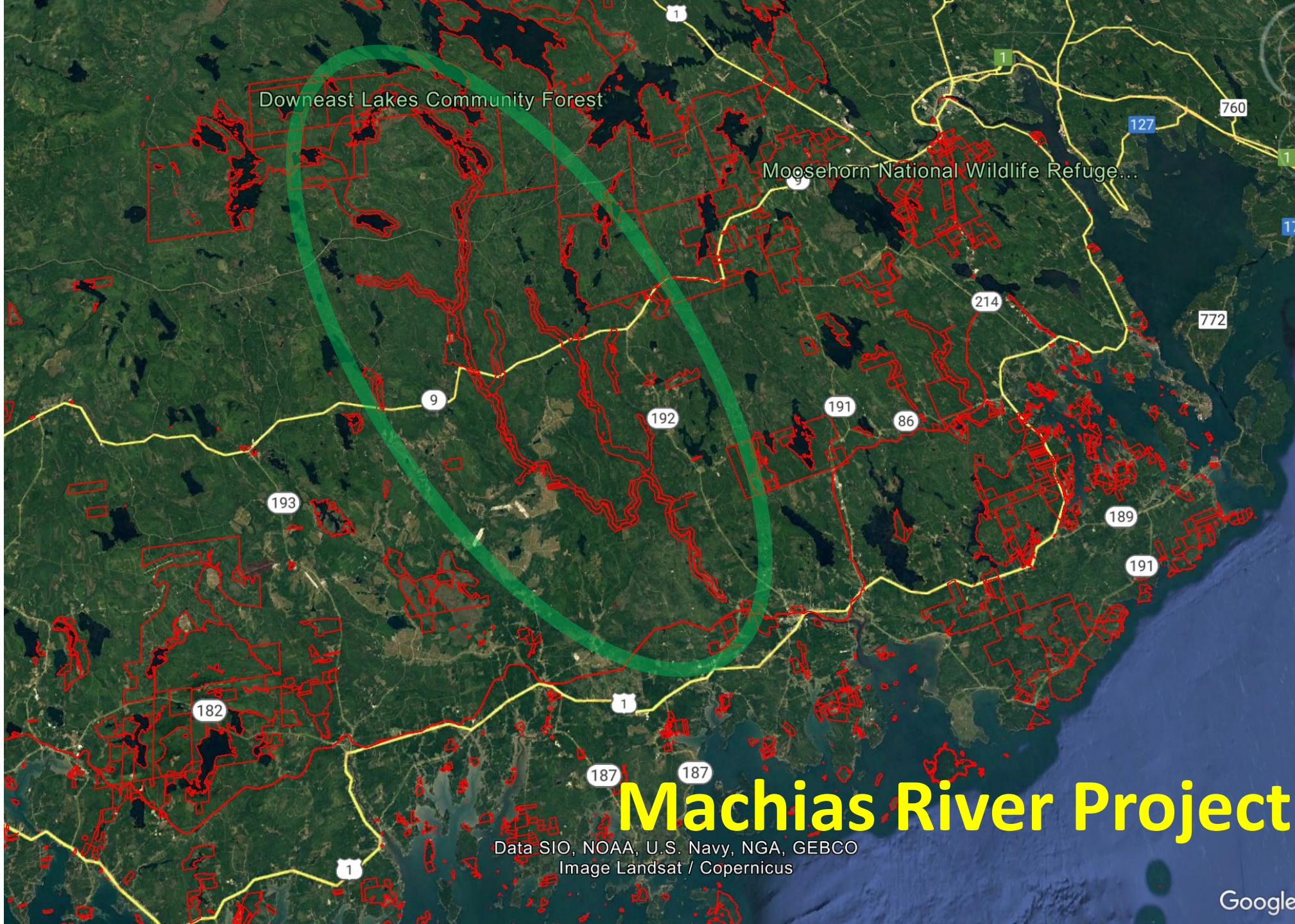
Source: Maine Coast Heritage Trust



# Crystal Spring Farm







Downeast Lakes Community Forest

Moosehorn National Wildlife Refuge...

# Machias River Project

Data SIO, NOAA, U.S. Navy, NGA, GEBCO  
Image Landsat / Copernicus





# Schoodic addition to Acadia NP

Data SIO, NOAA, U.S. Navy, NGA, GEBCO  
Image © 2023 TerraMetrics

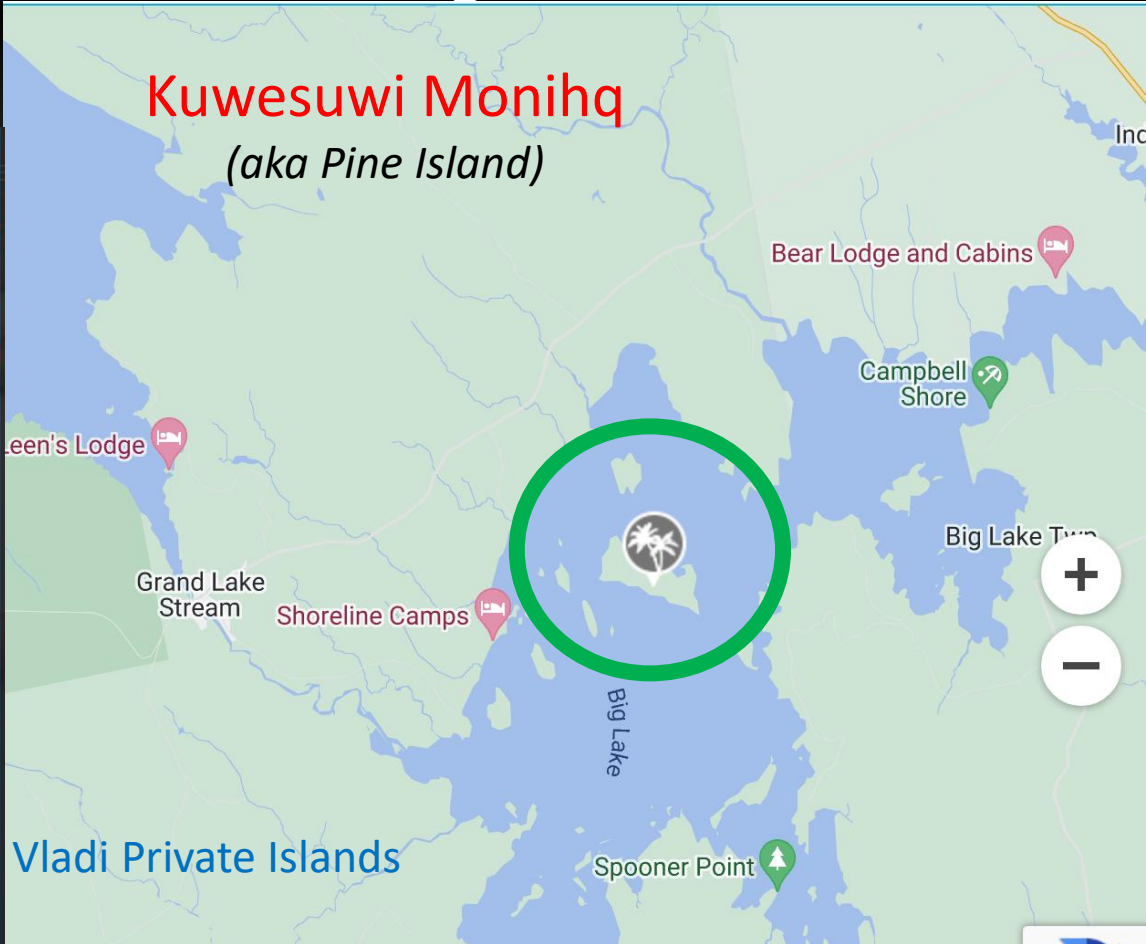


Israel-Hamas war SEC's X account hacked TV attack in Ecuador SAG nominees Adan Canto dies

# Maine tribe reacquires historically significant island lands



Source: Vladi Private Islands







Forest Service  
U.S. DEPARTMENT OF AGRICULTURE



