

Merrymeeting Bay

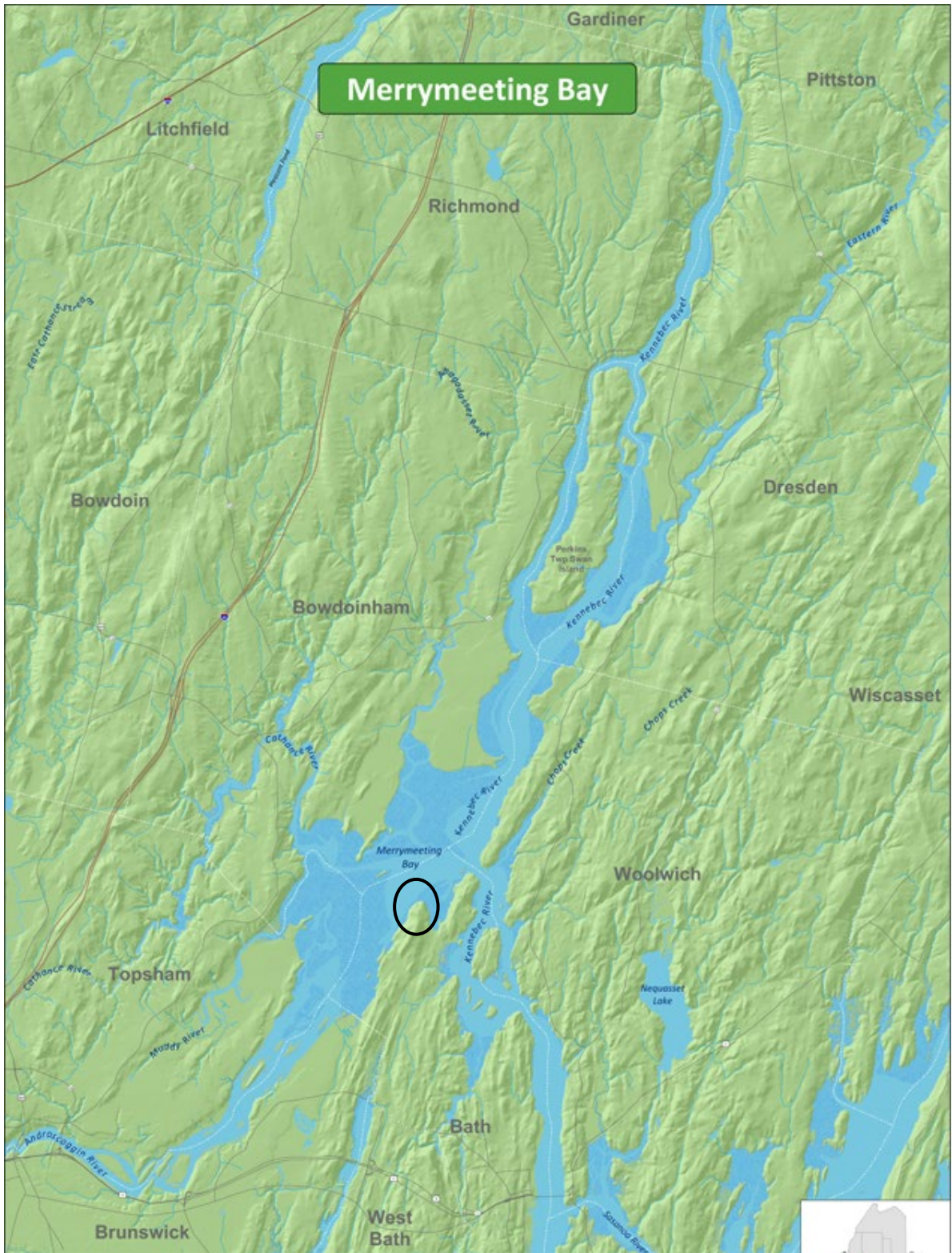
A Self-Guided Nature Tour of Merrymeeting Bay

Terry Porter
Midcoast Senior College
Fall 2024

A Natural History Introduction to Merrymeeting Bay
With Walks in Five Preserves that Touch the Bay



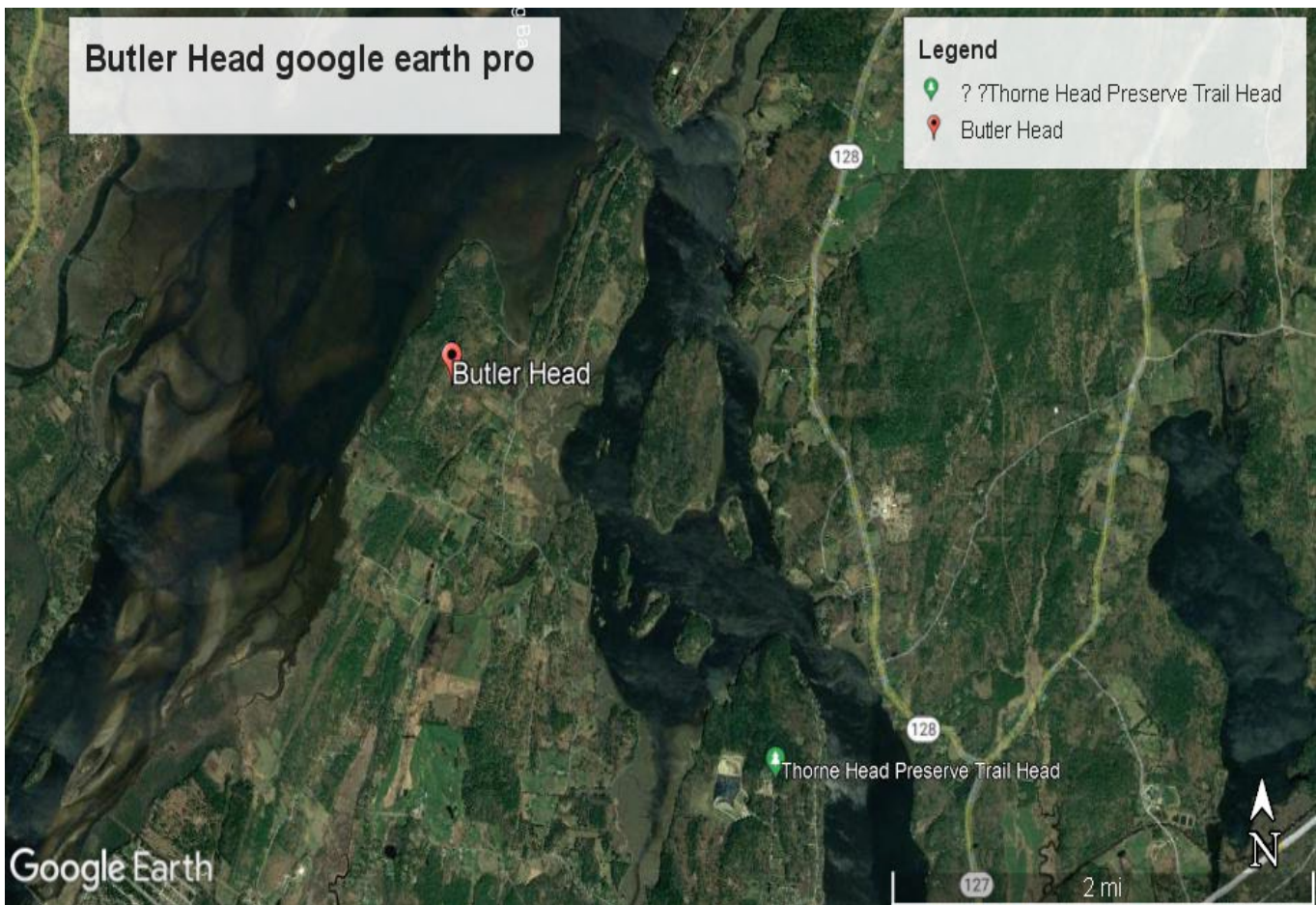
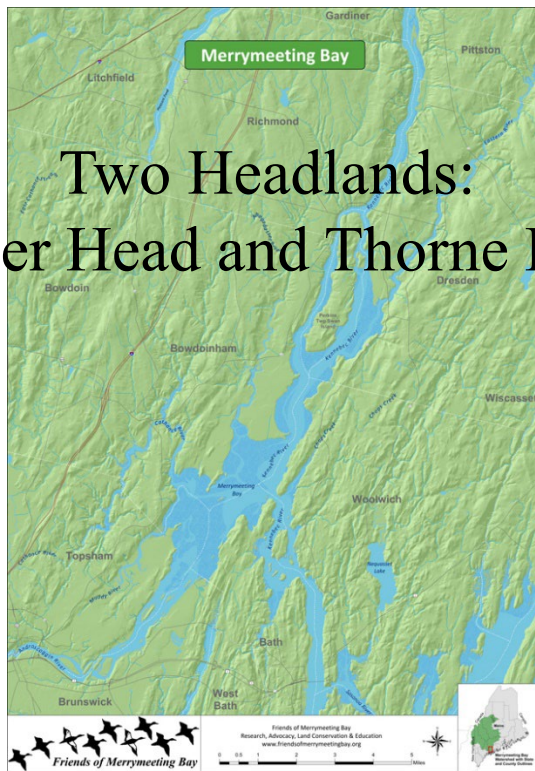
Butler Head Preserve, Bath



Friends of Merrymeeting Bay
Research, Advocacy, Land Conservation & Education
www.friendsofmerrymeetingbay.org



Two Headlands: Butler Head and Thorne Head



Butler Head Preserve, Bath



Kiosk at Butler Head first parking lot



Wildflower field at Butler Head



Butler Head Ecosystem Management Plan

Forest Ecosystem Management Plan
Butler Head Preserve & Whiskeag Woods
prepared for
City of Bath, Maine



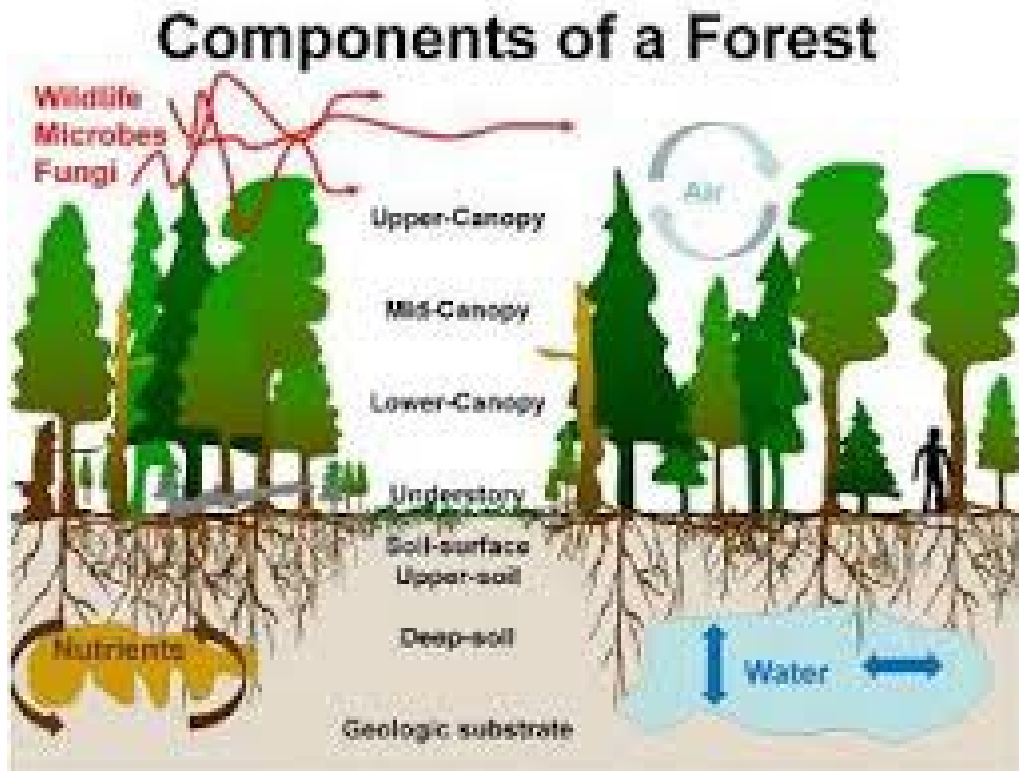
December, 2007

Prepared by:
Walker E. Armstrong, L.P. #576
74 Montway Road
Southwick, MA 04579
281-442-7430

Robert Bryant, L.P. #11
Maine Audubon
30 Gehring Farm Road
Bath, ME 04502



About Trees and Forests



About Trees & Mycelium in Forest Soil



Maine Forest Products Industry

Wood Products Exports by Industry (\$Millions), 2022

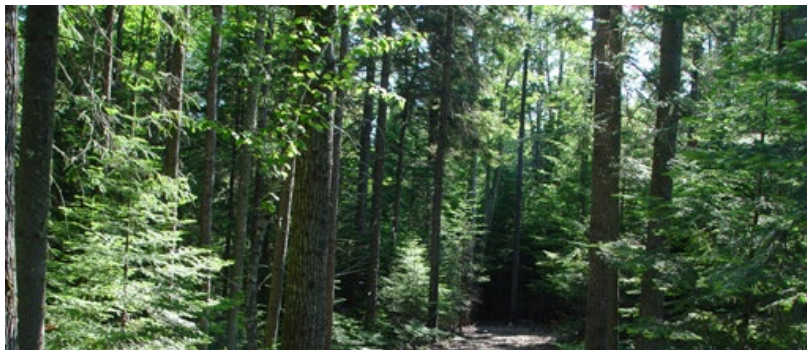


Source: IHSWorld

Tree Community Types at Butler Head



Northern hardwood forest

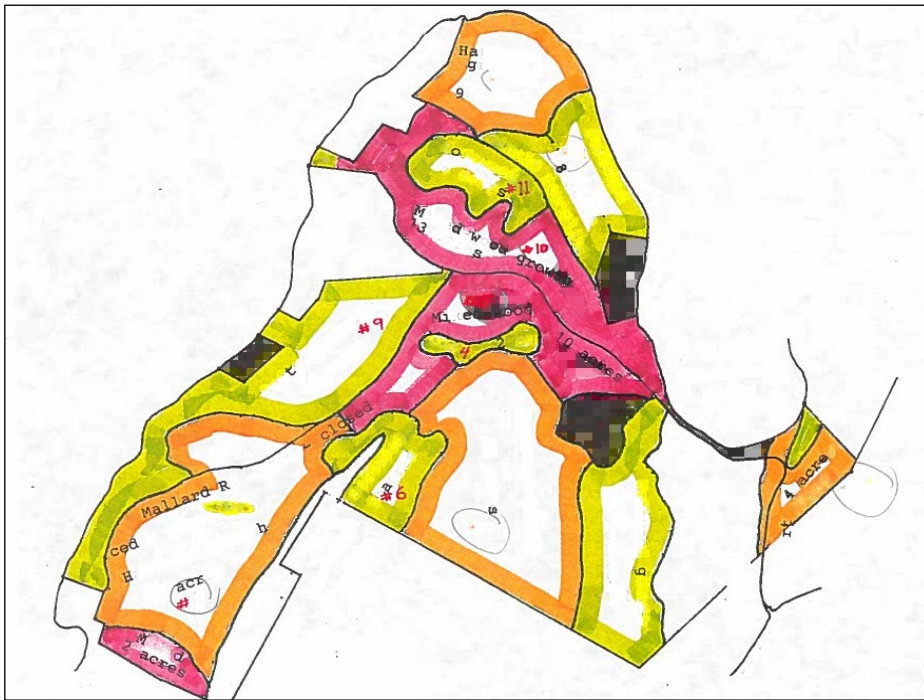


Northern conifer (softwood) forest

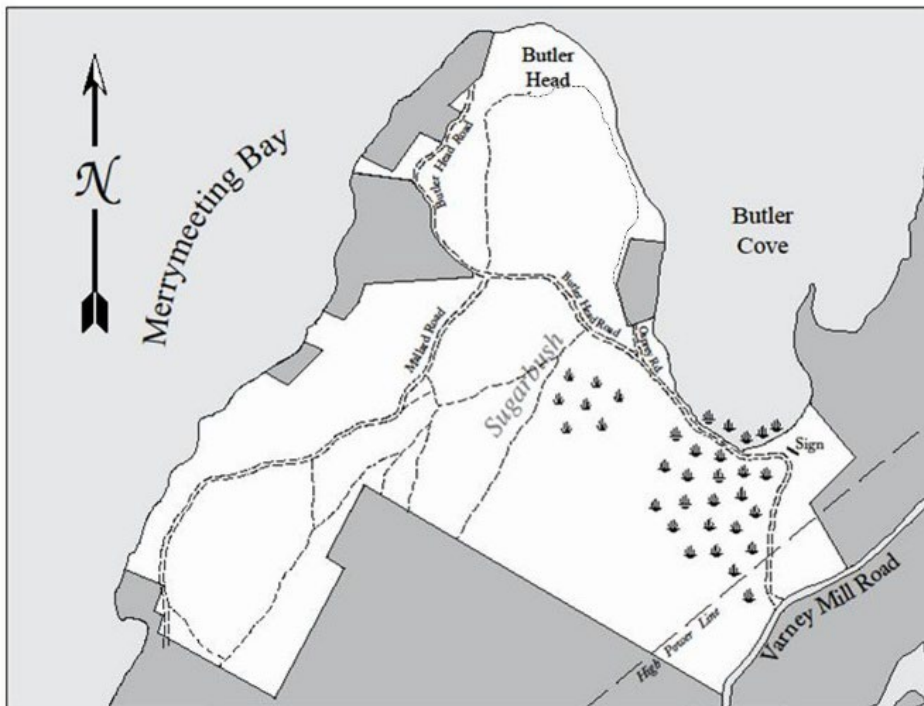


Northern oak – pine (mixed) forest

Butler Head: Tree Communities and Trail Map



Orange = Hardwoods; yellow = Softwoods; Red = Mixed



Maple sap collection tubing



Maple Sugaring



Clockwise from above: gathering sap with buckets; the traditional sugar house; the wood-fired evaporator; pouring off the finished syrup.



Riparian Zones

Special habitat features, such as snags and nest trees, can be incorporated into riparian zone and wetland management

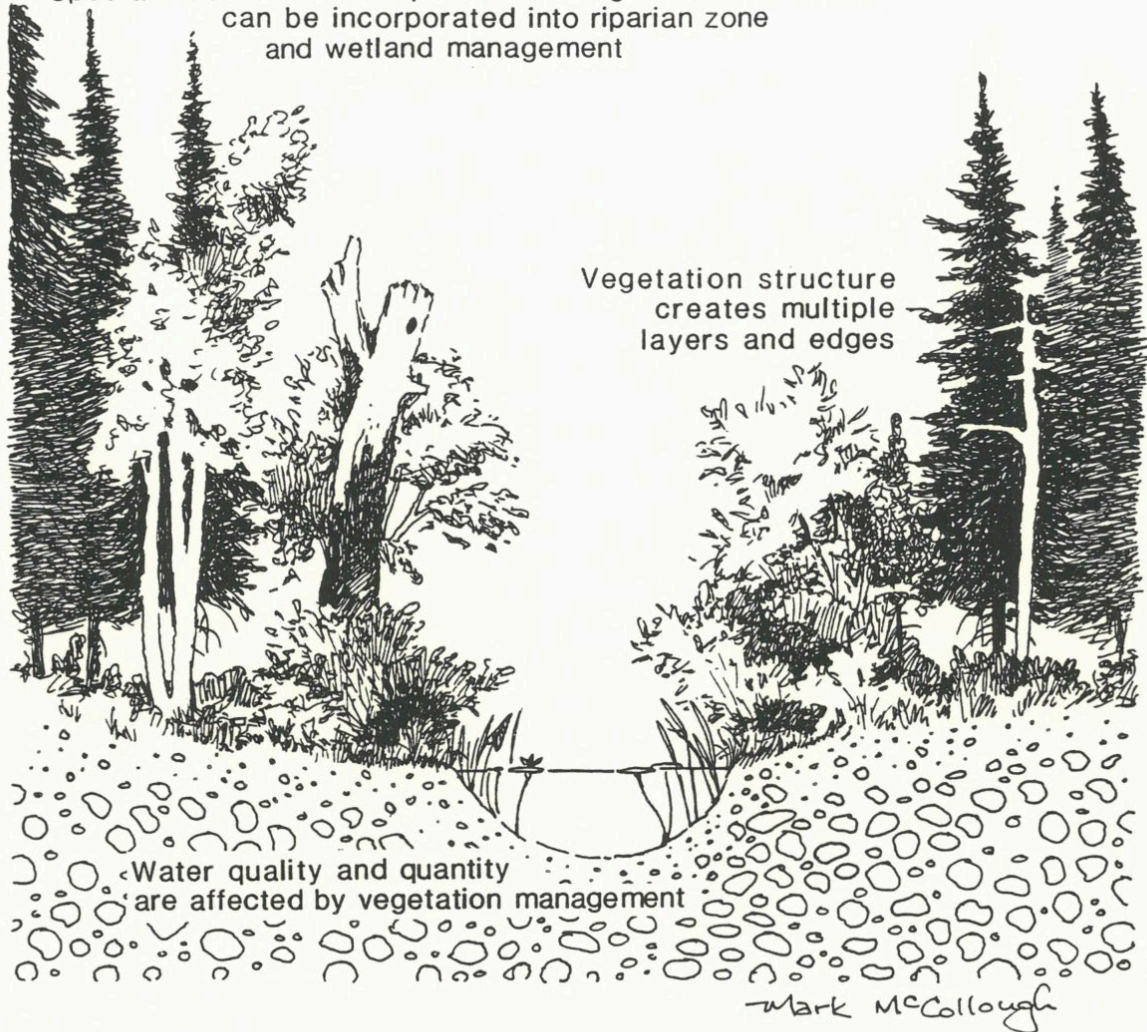
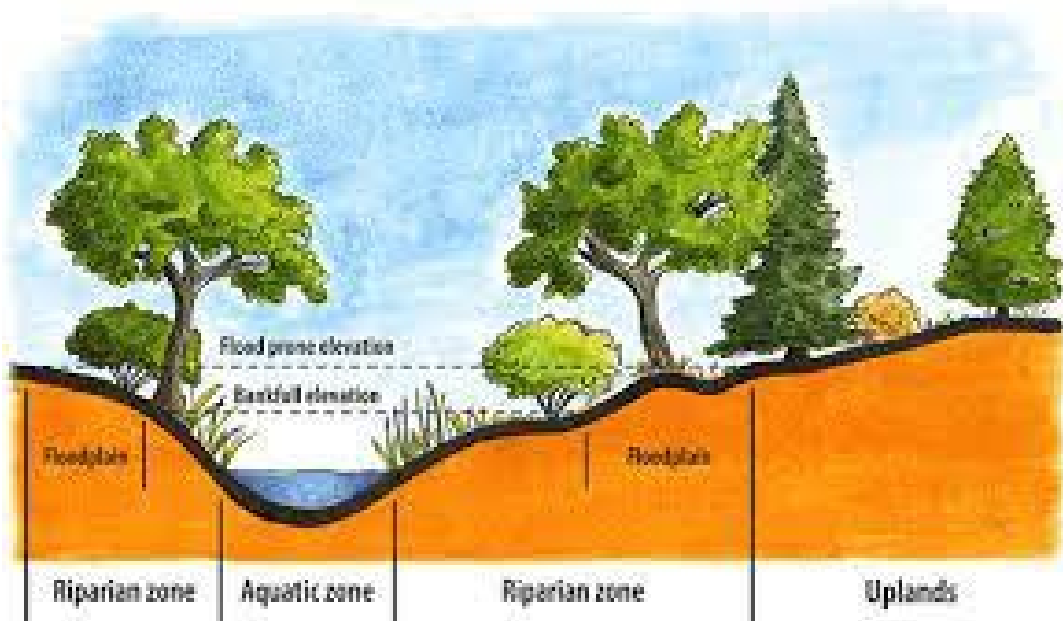


Figure 2. Riparian zones and wetlands are valuable for many reasons, including wildlife habitat.

Healthy Riparian Zone



Butler Cove – A Riparian Zone

