

# Merrymeeting Bay

## A Self-Guided Nature Tour of Merrymeeting Bay

Terry Porter  
Midcoast Senior College  
Fall 2024

A Natural History Introduction to Merrymeeting Bay  
With Walks in Five Preserves that Touch the Bay



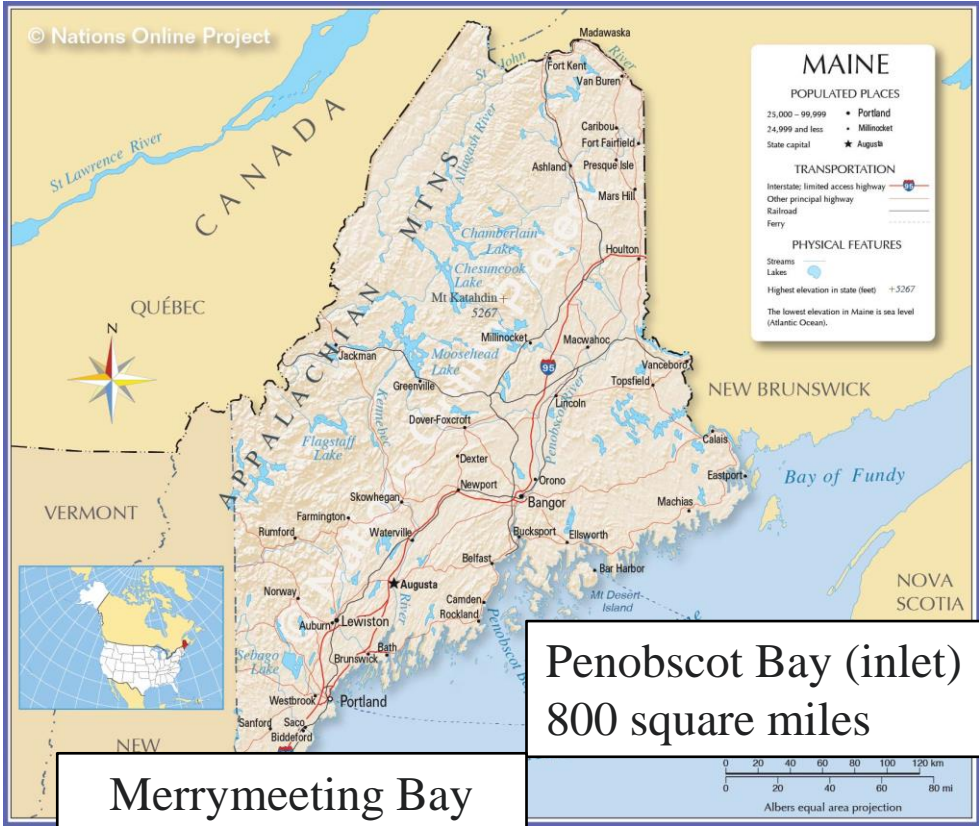
# Maine's Four Great Bays



**Great Bay – Fore River  
(Portland)**  
9.4 square miles



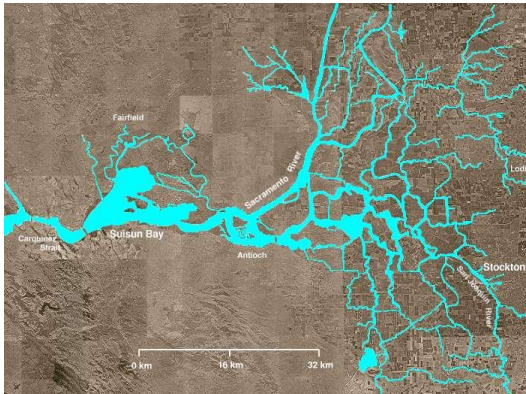
**Passamaquoddy Bay -  
St. Croix River - Bay of Fundy inlet  
(US-Canada)**  
3,600 square miles



**Merrymeeting Bay**  
15 square miles

**Penobscot Bay (inlet)**  
800 square miles

# The World's Four Great Inland Bays



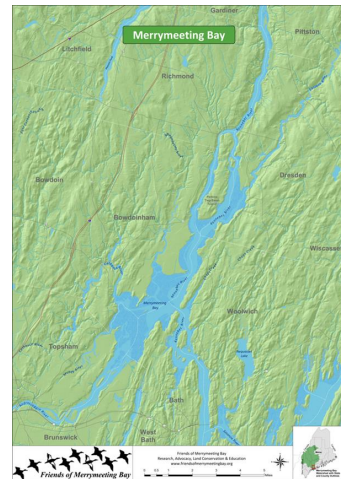
Sacramento–San Joaquin  
River Delta, California



Tigris and Euphrates Rivers,  
Iraq



Ganges—Brahmaputra-  
Meghna Delta, Bangladesh



Merrymeeting Bay, Maine

# Merrymeeting Bay Salinity

- Surface waters in the Gulf of Maine are 34 parts per thousand salt.
- In the Atlantic Ocean beyond Georges Banks the salinity is 36 parts per thousand salt.
- Freshwater from rivers has a salinity value of 0.5 ppt or less.

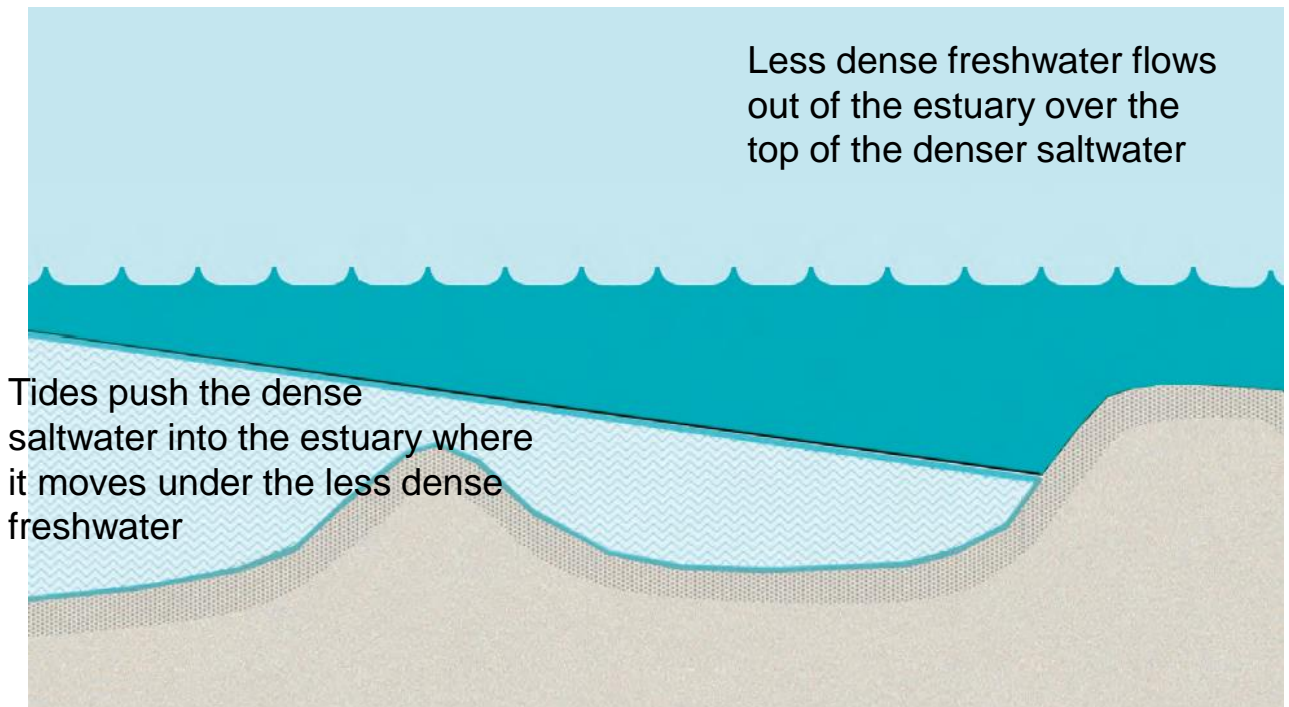


**Merrymeeting Bay average overall water salinity does not exceed .5 parts per thousand, about the same as river water.**

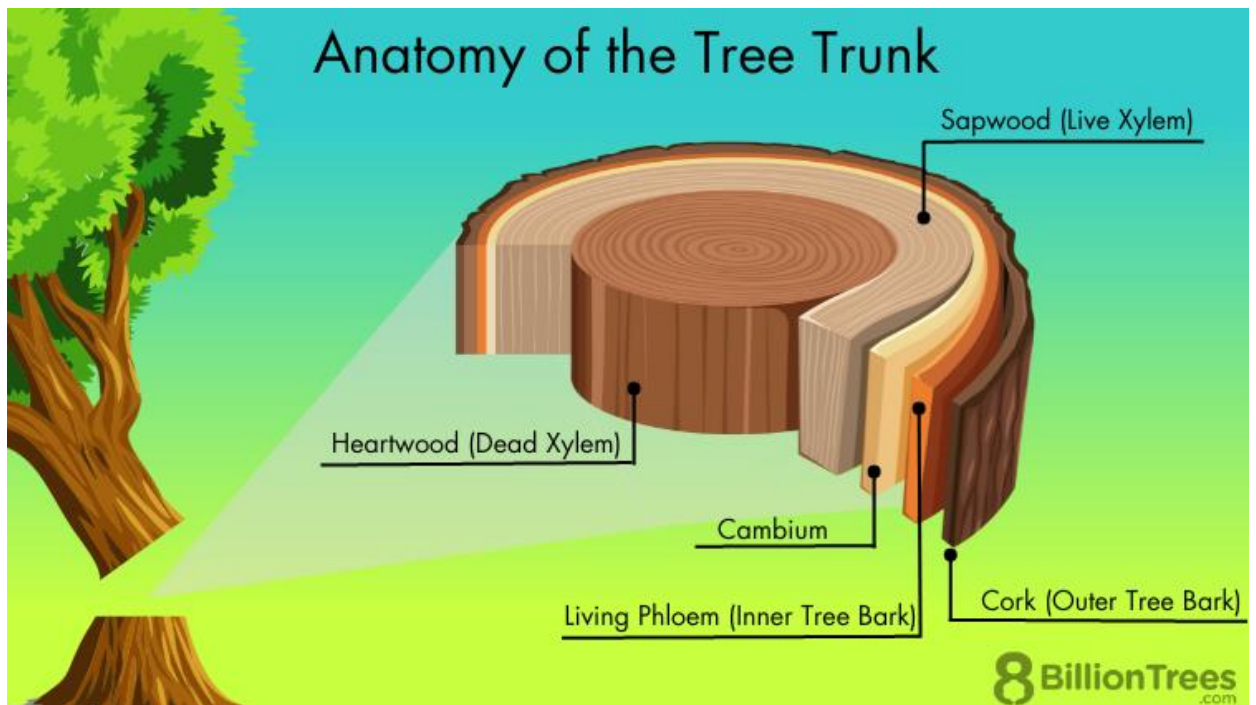
# Composition of Merrymeeting Bay

- Rivers contribute ~95% of water in the Bay.
- The Kennebec River contributes the most water.
- The Androscoggin River contributes the most sediment.
- Salinity in the Bay is highly variable, by season, location, tides, river volumes, etc.

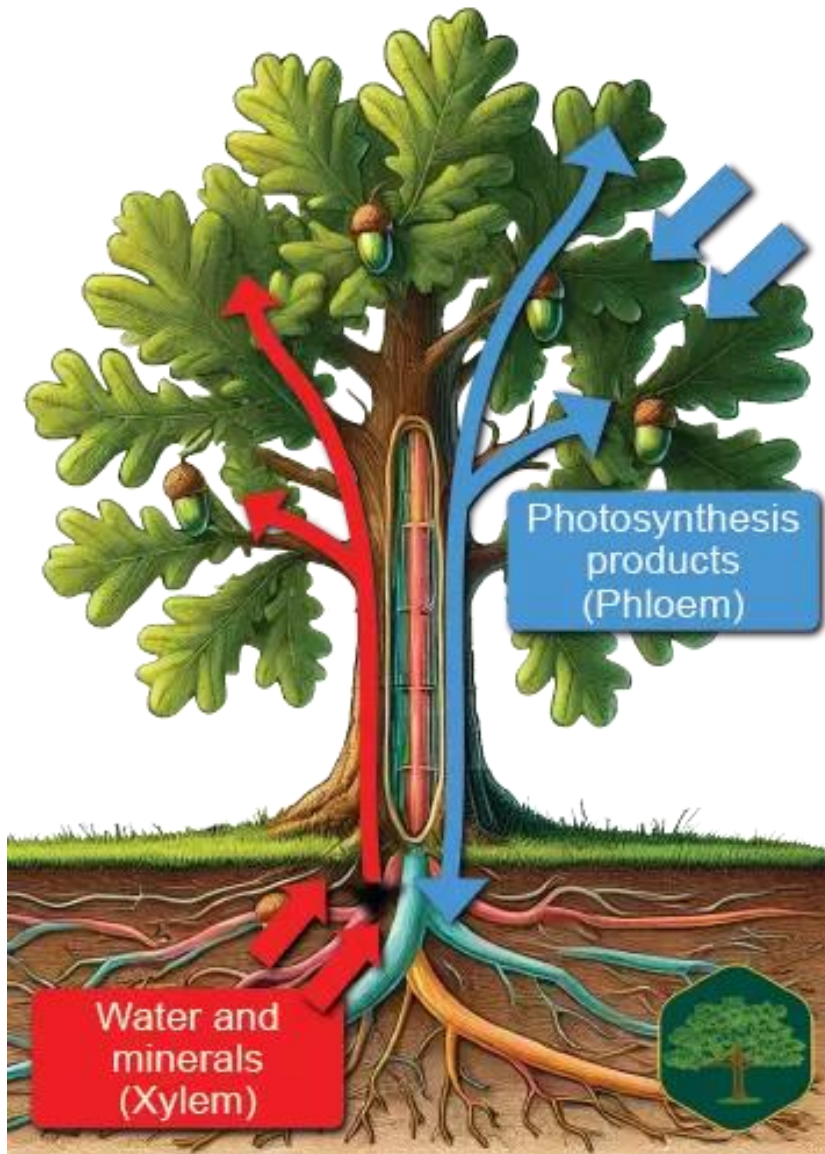
## The Chops Create a Classic “Salt Wedge”



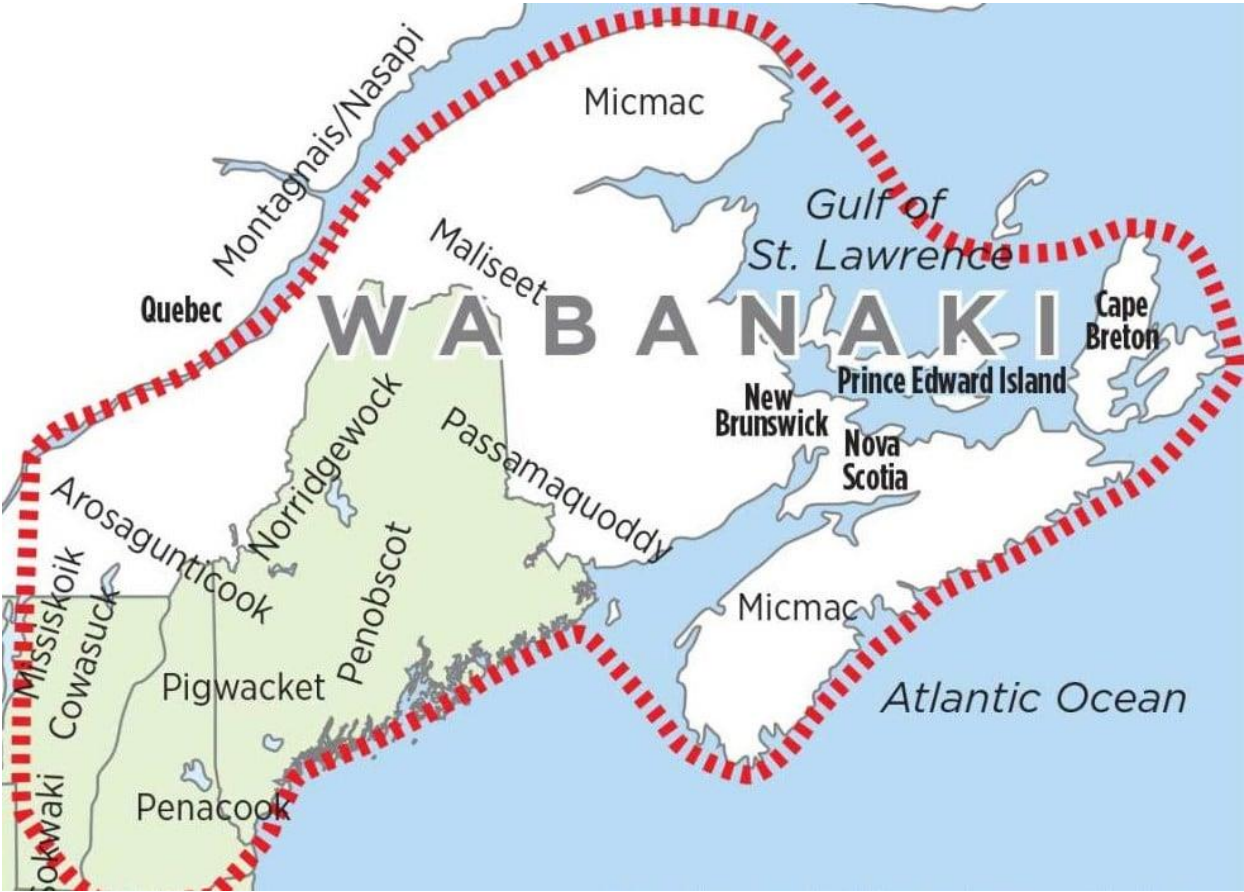
# Tree Trunk Anatomy



# Liquid Systems and Flows in Trees

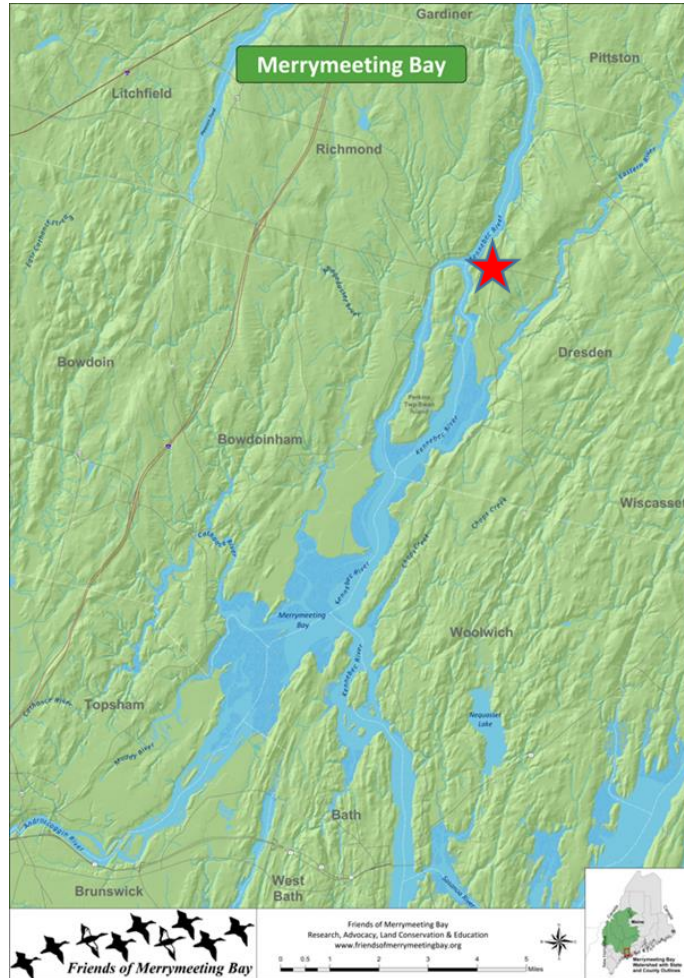


# Northeastern Wabanaki Peoples



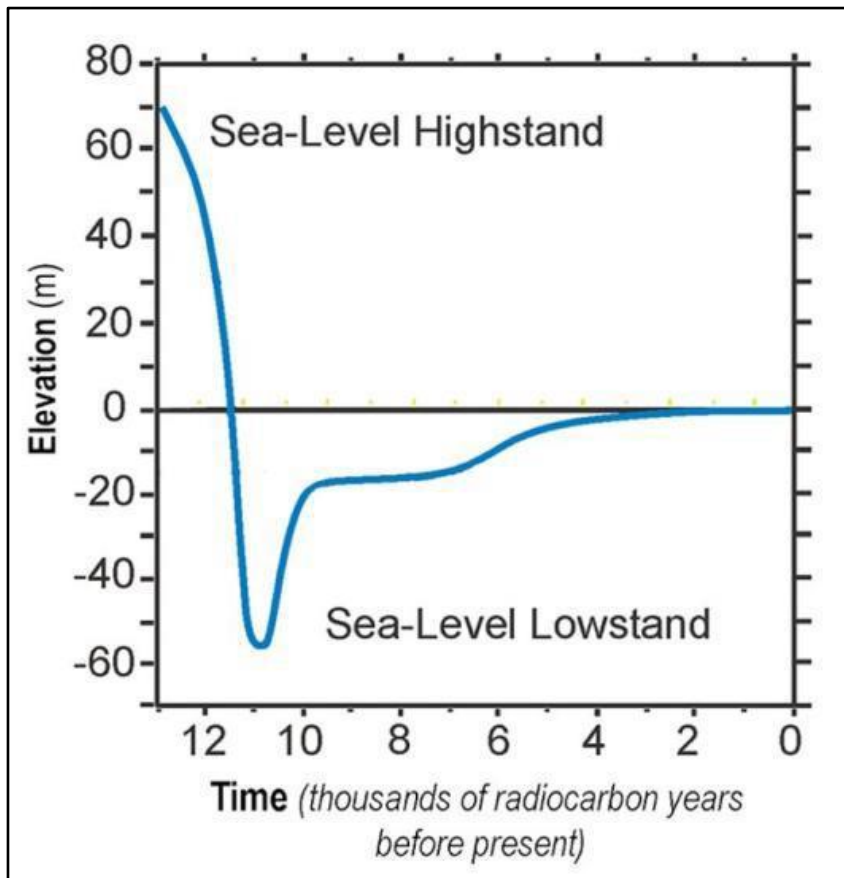


# Early Peoples in Dresden



## 9000 Years Ago in Dresden

# Evolving Geology in Archaic Period



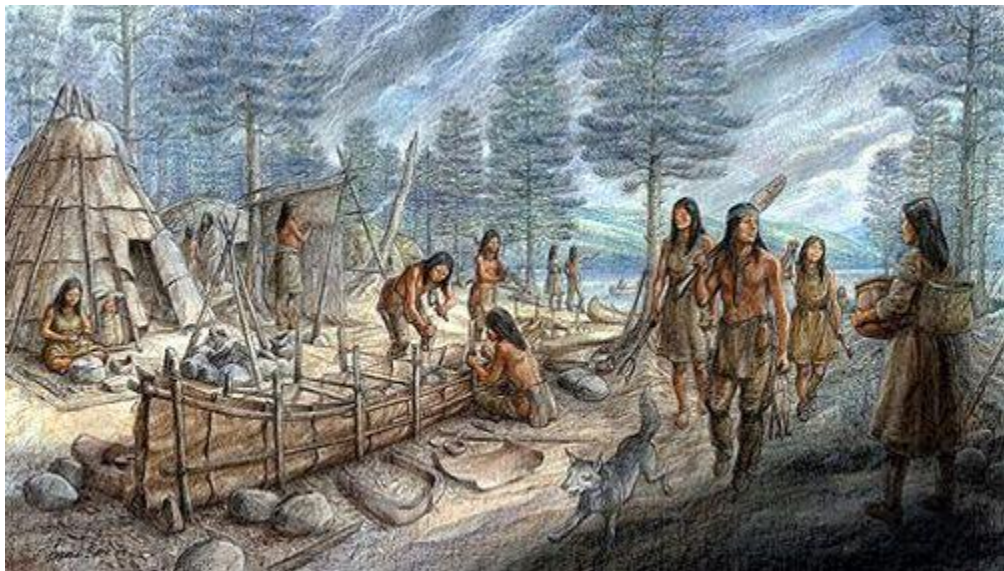
# Dresden Falls Archaic Preserve



# Archeological Dig at Dresden Upper Field



# Archaic Period Peoples in Maine



# Fish Weir Designs

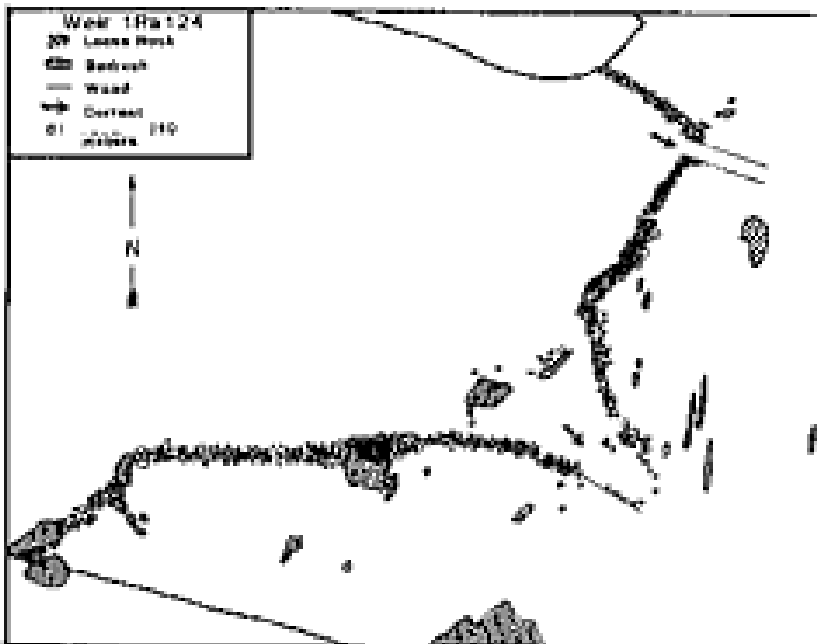
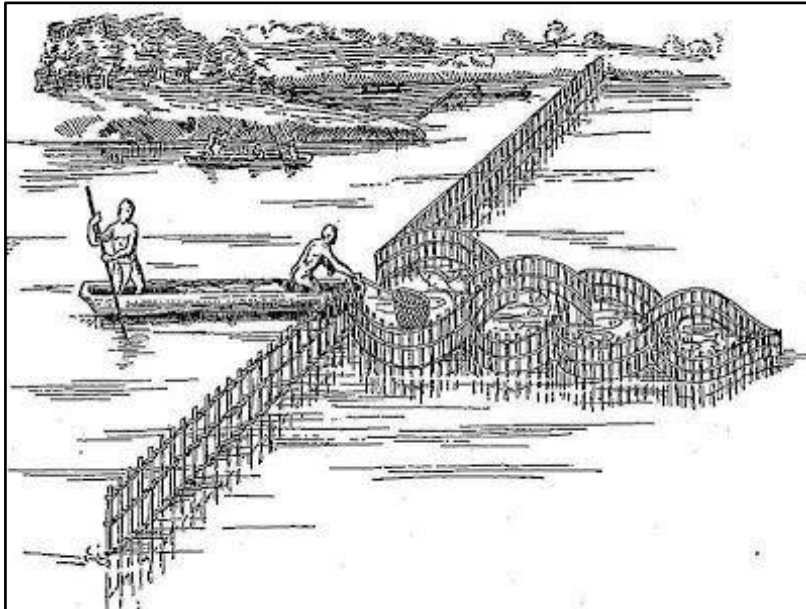


Figure 7

# Remnants of a Fish Weir on the Sebastacook River



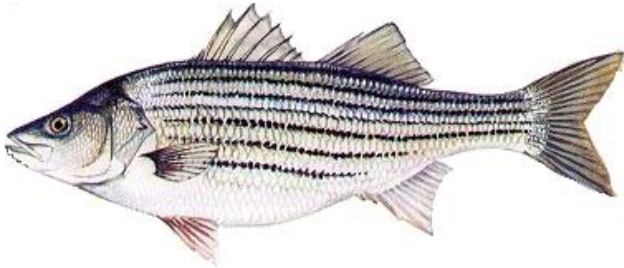
# Archeology of Wabanaki Sites

- [Maine State Museum](#), Augusta (closed for renovations)
  - [Arthur Speiss lecture on 13,000 years of Maine Native American Life](#)
- Abbe Museum, Bar Harbor
  - The Abbe Museum's collections focus on contemporary and historic Native American art, artifacts, and objects from Maine and the Northeast, totaling over 70,000 items.
  - [People of the First Light Core Exhibit](#)
  - 2021 Hours  
Open Monday, Tuesday, Wednesday, Thursday, Friday  
10 am - 5 pm





## Some Anadromous Fish of MMB



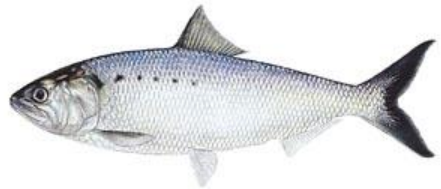
Striped bass *Morone saxatilis*



Alewife *Alosa pseudoharengus*



Atlantic salmon *Salmo salar*



American shad *Alosa sapidissima*

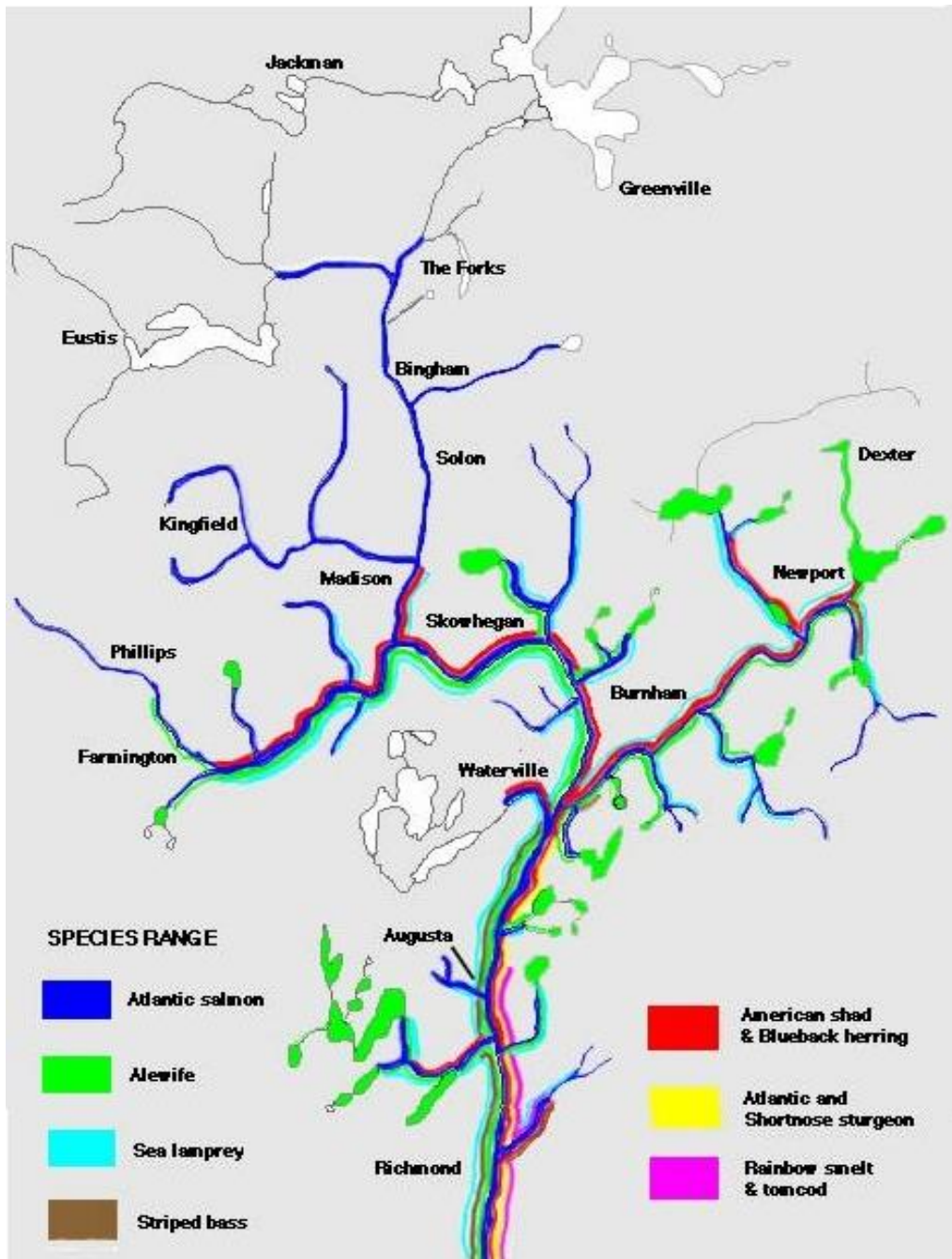


Sea run brook trout  
*Salvelinus fontinalis*



American eel *Anguilla rostrata*

# Anadromous Fish of the Kennebec River



[Alewife migration - 2017 YouTube](#)

# Optional Walk 1: Pownalborough Court House Trails

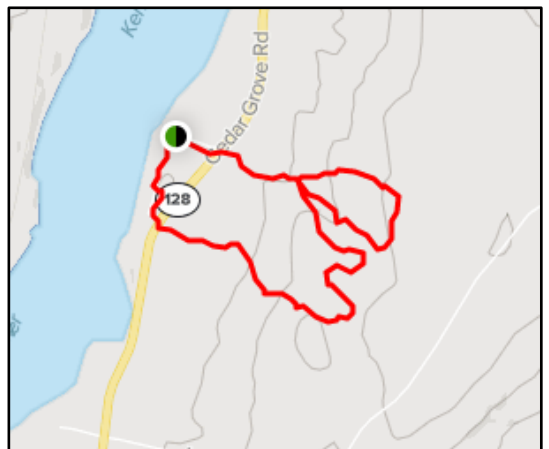


[MUSEUM](#)  
[23 Court House Rd](#)  
[Dresden, ME 04342](#)

**HOURS**  
•Sat, Sun, & Mon:  
10:00 am – 4:00 pm



## Trails



## Bonus Walk 2: Green Point Wildlife Mgmt Area



- A flat, easy walk through old fields and an orchard. Approx. 1 mile.
- Brings you to a pine grove at the upper reaches of Merrymeeting Bay.
- Excellent walking, birding, wildlife viewing.