

# Merrymeeting Bay

## A Self-Guided Nature Tour of Merrymeeting Bay

Terry Porter  
Midcoast Senior College  
Fall 2025



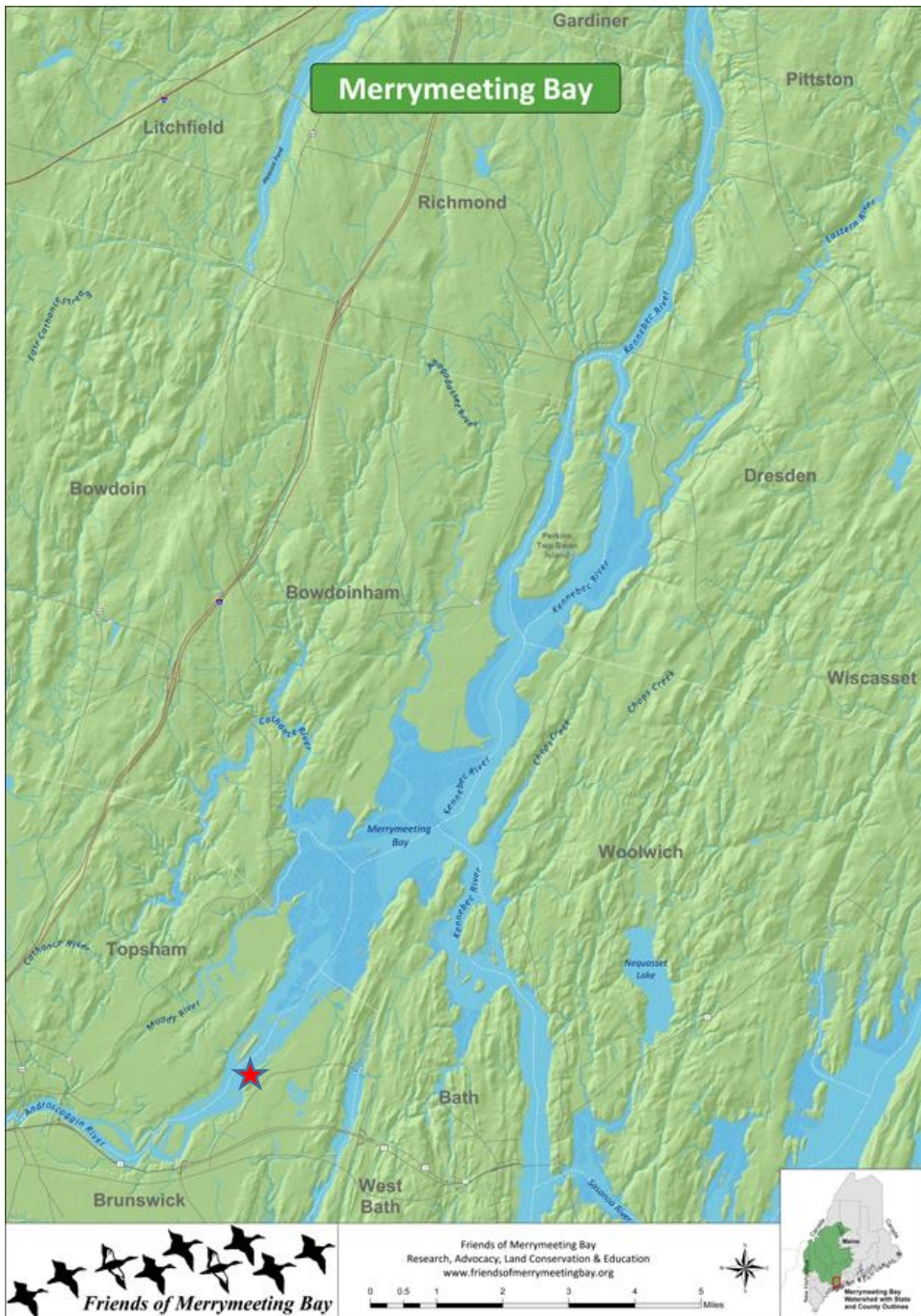
# Today's Agenda

- Bay Bridge Waterfront Park
- Habitats at Bay Bridge
- Birds
- Responses to Eco-Collapse and Climate Change





# Bay Bridge Waterfront Park, Brunswick



# Bay Bridge Landing Wetland Park



## Directions:

- From Cook's Corner in Brunswick take Bath Road north to the second stoplight (opposite Lowes).
- Go left onto Old Bath Road, 2.5 miles, and take a left onto Bay Bridge Road.
- Bear left at the T-intersection to stay on Bay Bridge Road, and proceed about ½ mile all the way to the end.

# About the Park



- A 0.3-mile walking path with interpretive signs.
- Handicapped and wheelchair accessible.
- Scenic benches with views of the bay.
- A gravel boat launch for small boats and canoes.
- Opportunities for bird watching, fishing, and ice fishing.
- Constructed in 1998 (Topsham-Brunswick bypass).
- The historical site of the Bay Bridge, which once connected Brunswick and Topsham.
- Dogs allowed on leash.





## The Rock Jetty: Remnants of the 1835 Bridge



# Birdwatching Trail on Androscoggin River





# Accessible Trail



# Multiple Habitats



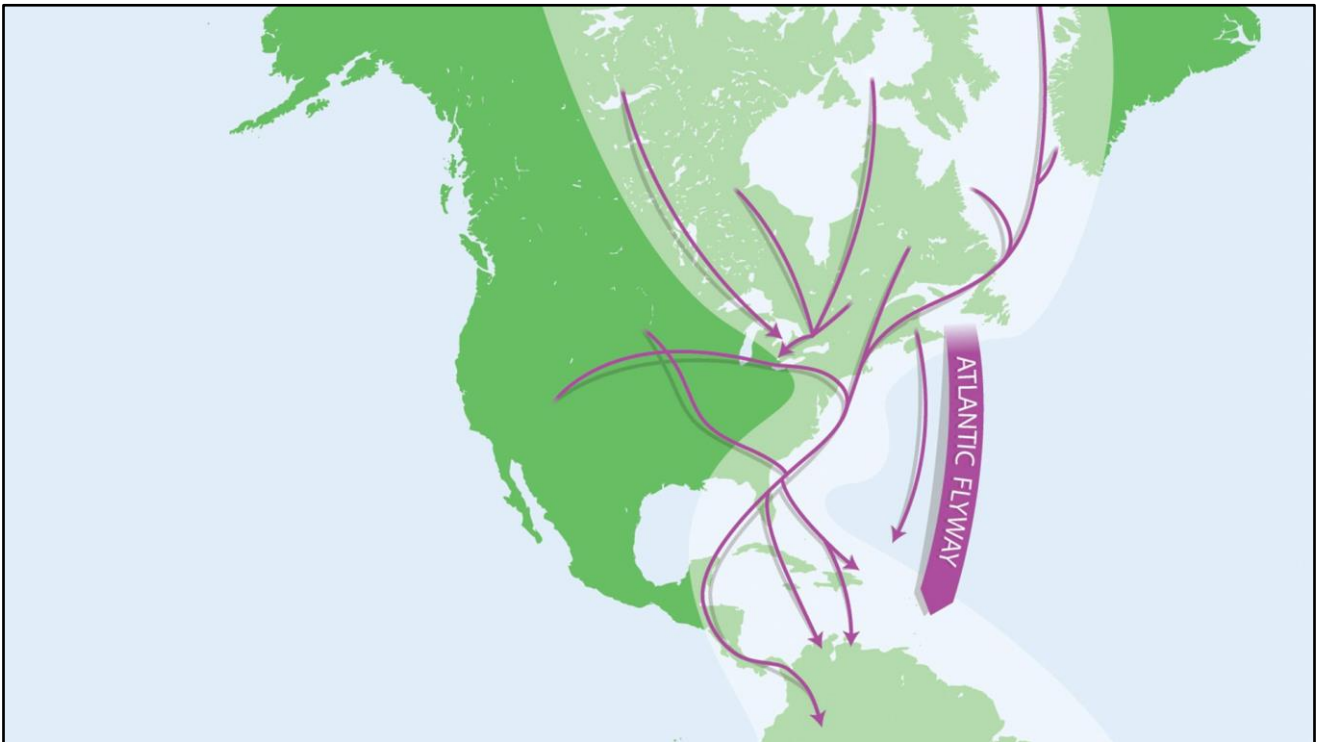
## Birds in Flight

One way to enjoy our avian neighbors is to keep an eye to the sky overhead. Either close in or far away, it's possible to see many species at Bay Bridge. It can be hard to tell them apart though, even with binoculars. The silhouettes below show the heron, eagle, duck and osprey. Notice how the front of the eagle and osprey wings differ—this is one way to tell them apart (osprey in upper right).



Merrymeeting Bay and surrounding waters are especially important to migrating waterfowl, who come here on their spring and fall migrations.

# Bird Migration Routes



Flyways

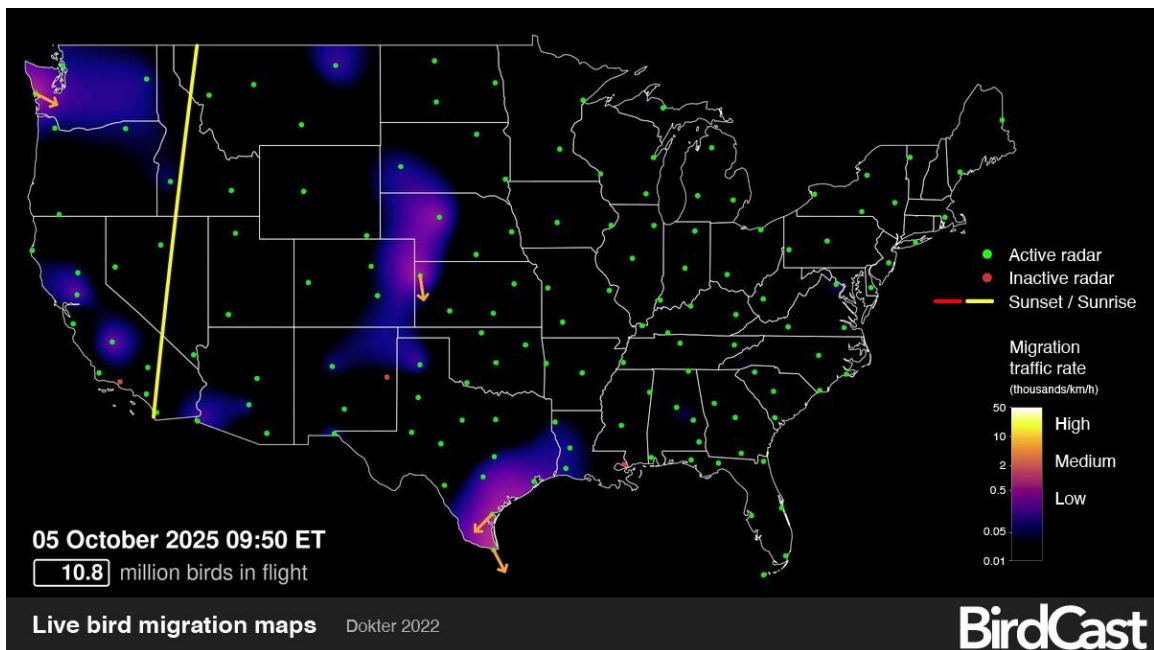


# eBird – Cornell Lab of Ornithology



# Birdcast phone app: Nighttime Bird Migration

- Predicted nocturnal migration 3 hours after local sunset and updated every 6 hours.
- Live migration maps that report how many birds actually are in flight in a particular place.
- Intensities of actual nocturnal bird migration as detected by the US weather surveillance.



[Birdcast link](#)



# Merlin: Live Sound ID for Birding



[Home](#) [The Story](#) [Sound ID](#) [Help](#) [Download](#)

Identify the birds  
you see or hear  
with Merlin Bird ID

Free global bird guide with photos,  
sounds, maps, and more.

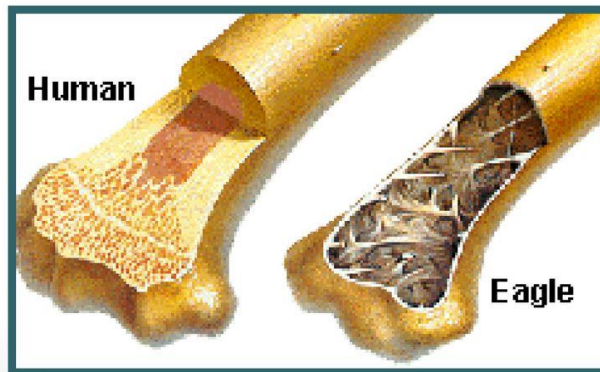


1. Download the free app “Merlin” from Google Play or other app store.
2. Click to the “sound ID” tab.
3. Carry your phone with you on your walks to identify birds in your locale.

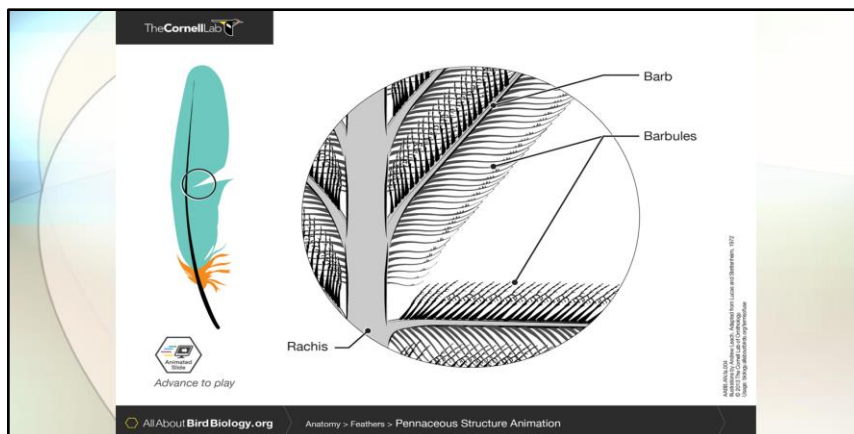
# How Do They Do It?

## Designed for flight

- Bird bones are hollow, lightweight for flying; have air spaces



Bird bones are hollow for light weight and strength.

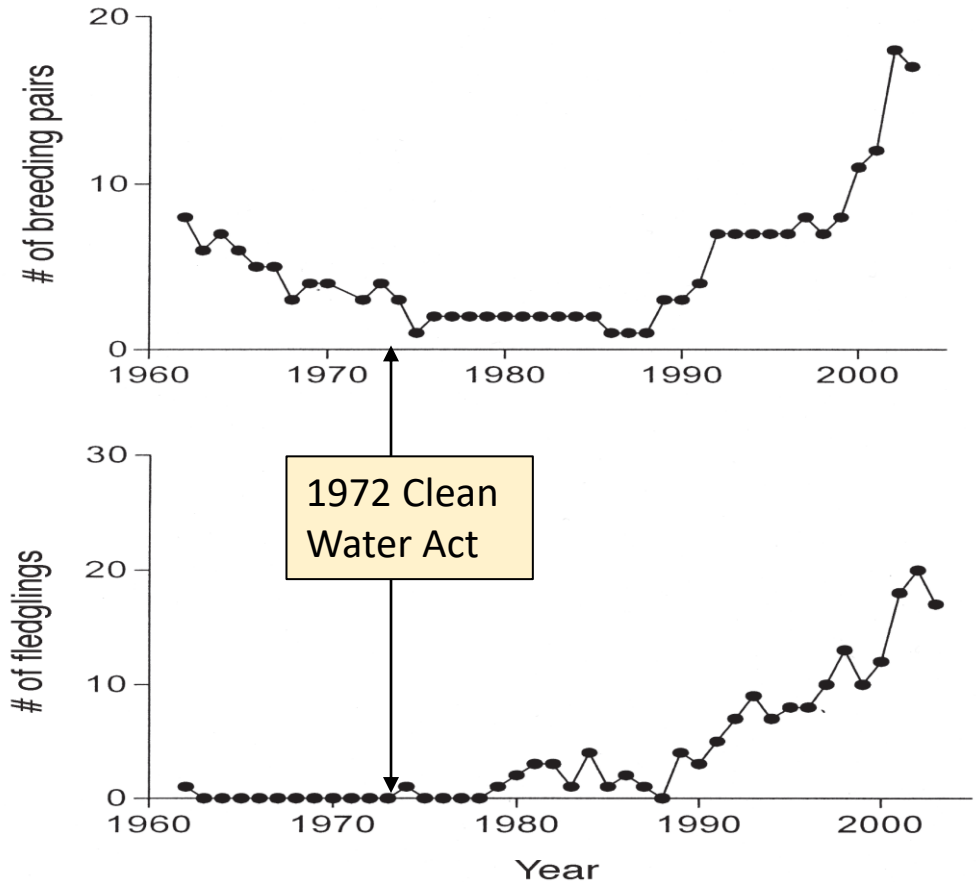


Feather design: interlocking microscopic hooks on barbules form a wind and waterproof barrier that allows birds to fly and stay dry.

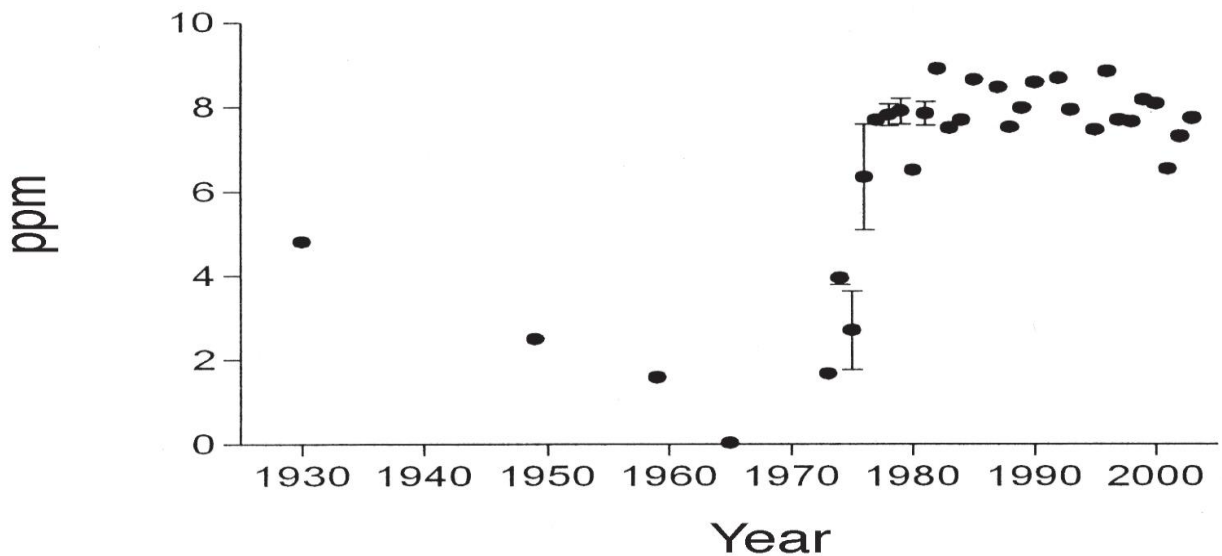


# Merrymeeting Bay Ecological Collapse and Partial Recovery

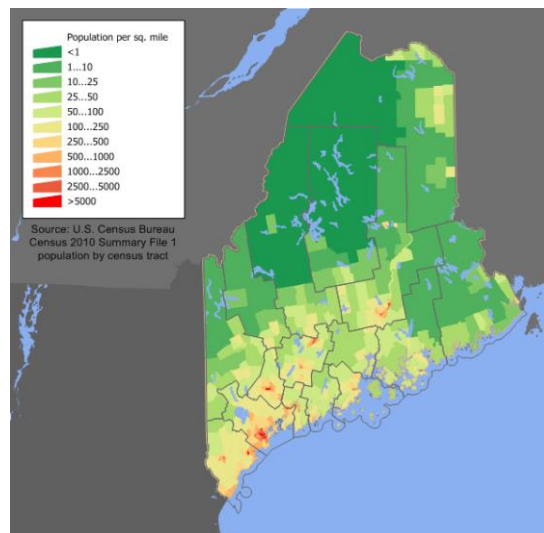
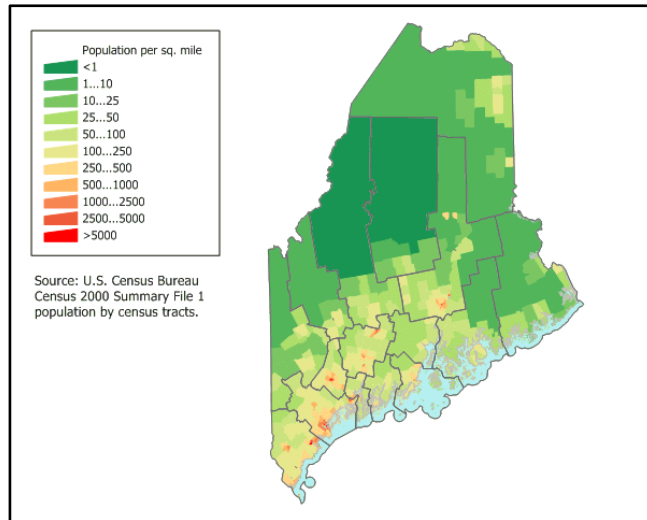
Bald Eagle Time Series



Dissolved oxygen



# Population Density 2000 & 2010

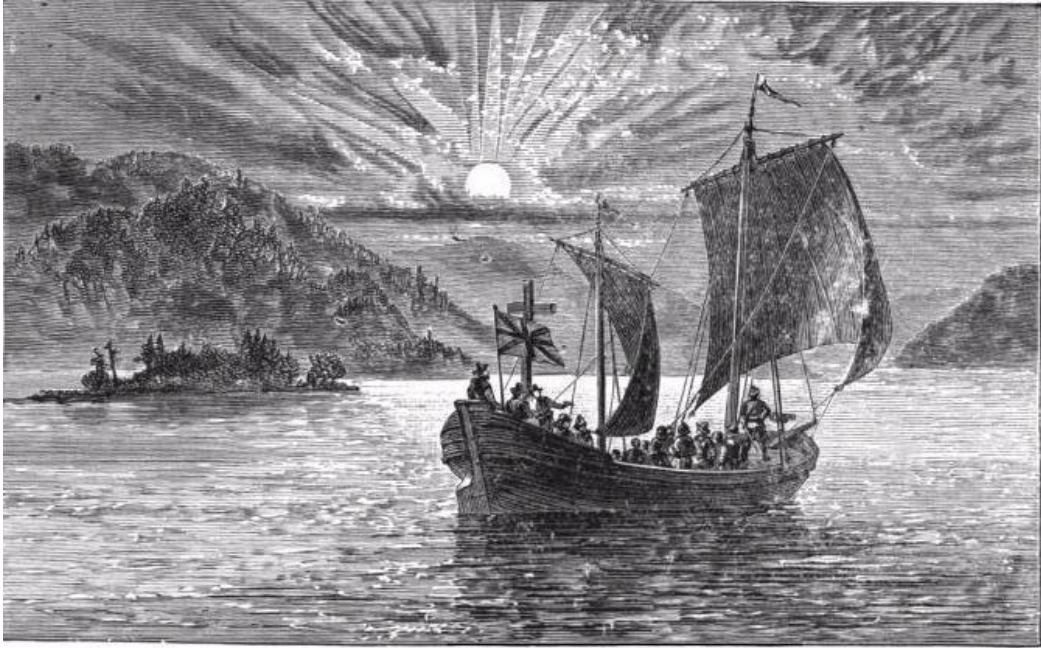


[The Nature Conservancy](#)  
[Resilient and Connected Landscapes](#)

#1,5



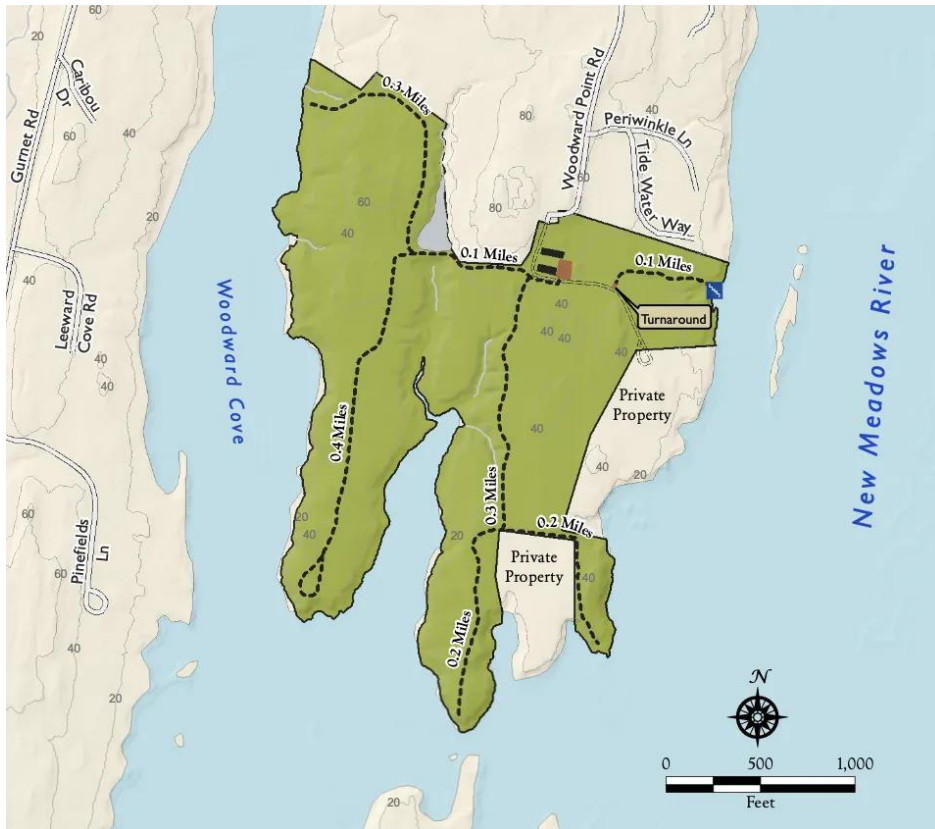
# Early European Settlement



CAPT. WEYMOUTH SAILING UP THE PENOBSCOT.



# An Extra Walk: [Woodward Point](#)



## [Directions](#)