

SESSION 1 - TERMS

AI

AGI

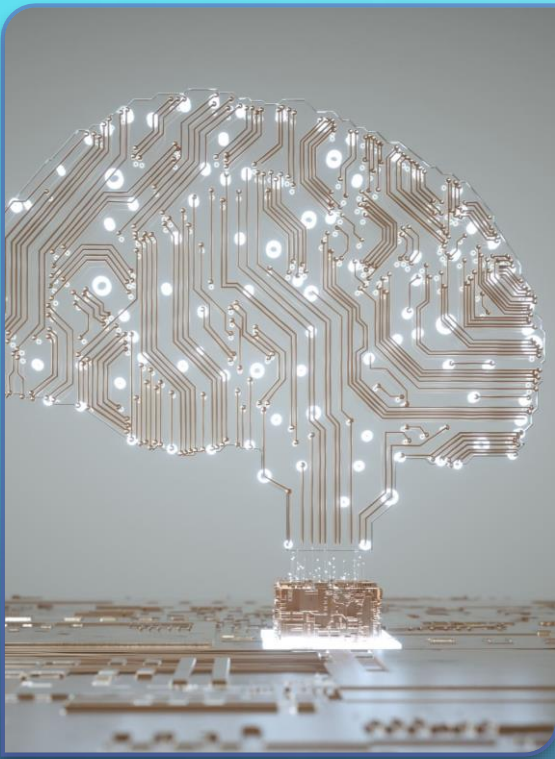
Ambient AI

Prompt

Bias

Hallucinations

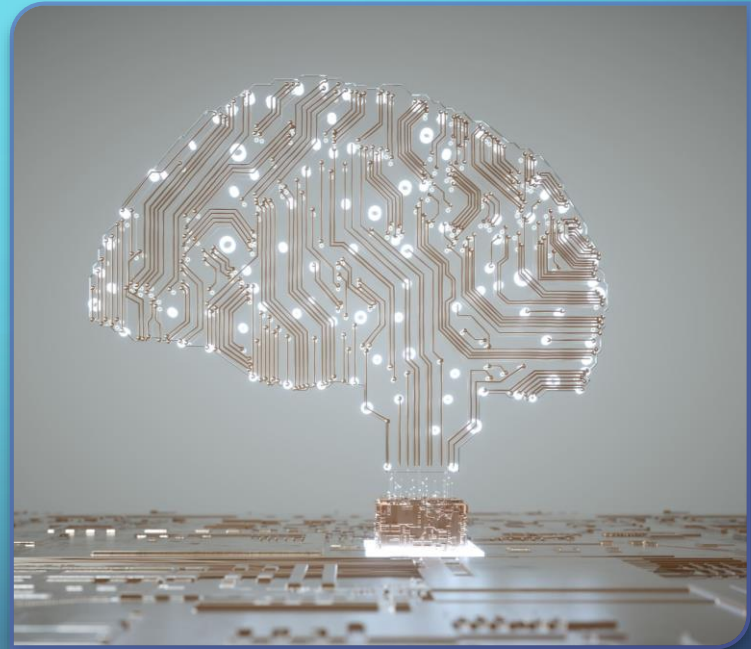
ARTIFICIAL INTELLIGENCE (AI)



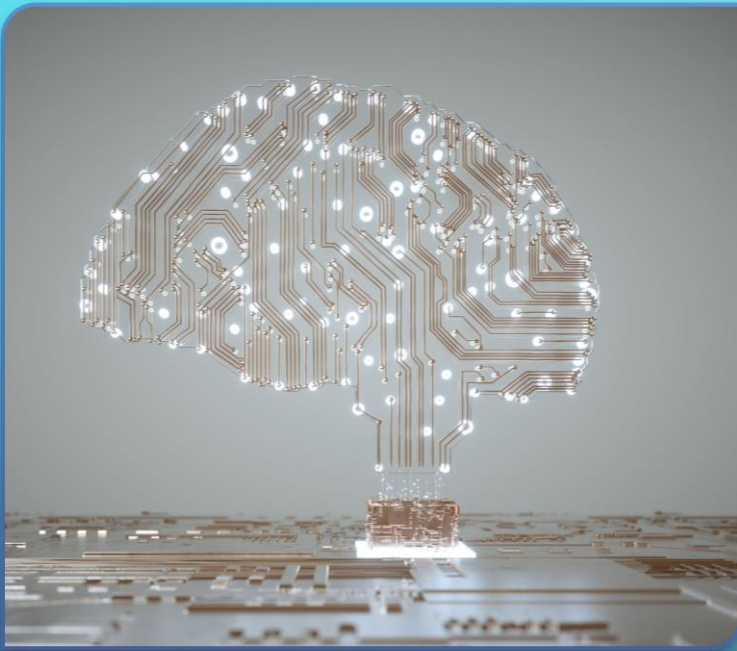
- Computer systems that perform tasks requiring "human" intelligence, like understanding language, recognizing images, or making decisions.

ARTIFICIAL GENERAL INTELLIGENCE (AGI)

- A hypothetical kind of AI that can understand, learn, and perform any intellectual task a human can, across many domains, with similar flexibility and adaptability.



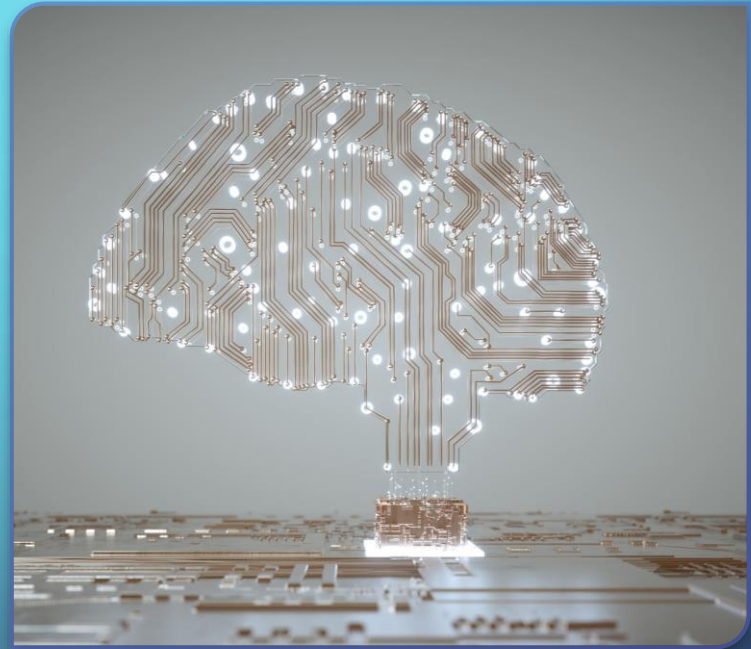
AMBIENT AI



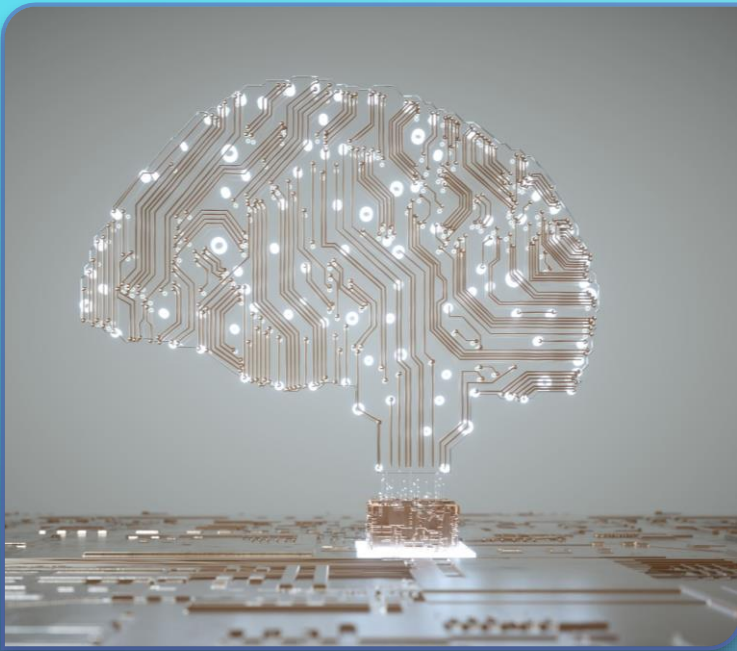
- Artificial intelligence that runs quietly in the background, sensing what's going on and automatically adjusting things around you.

AI PROMPT

- The question, instruction, or request given to an AI system.



BIAS



- When AI produces unfair or unbalanced results.

HALLUCINATION / CONFABULATION

- When AI provides an answer that sounds plausible but is made up.

